

# Brentwood

4 BEDS | 2 1/2 BATHS | 2-CAR GARAGE | 2,624 SQ. FEET | TWO STORY



AMERICAN



CLASSIC



HERITAGE

- Open floorplan with formal dining room and eat-in kitchen
- Owner's entry with easy access to pantry, laundry and powder room
- Entry vestibule with switch back staircase facing family room
- Two formal rooms with bonus flex room space
- Spacious master suite with 2-person walk-in closet
- Bonus garage storage space
- Walk-in attic storage space

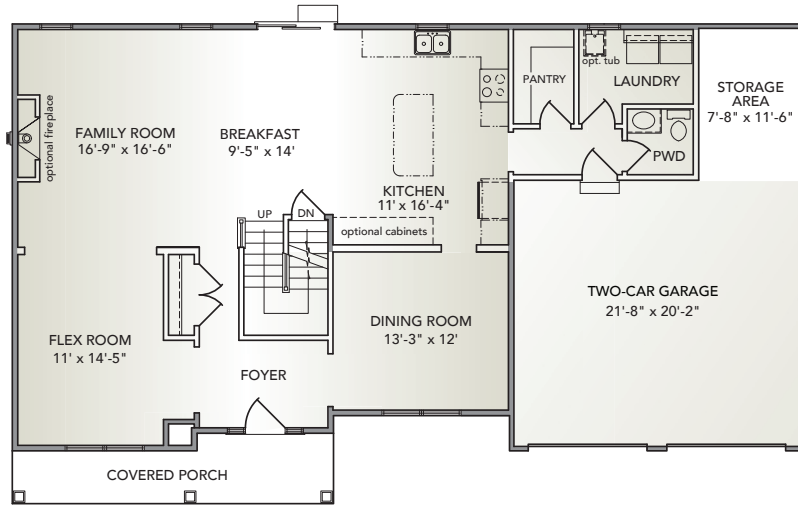
Information presented is for illustrative purposes only. Room dimensions and details may vary based on options and elevation selected. Not all features are shown. Please ask a New Home Sales Specialist for complete information. EGStoltzfus reserves the right to make changes without notice. Copyright ©2020 EGStoltzfus Homes.



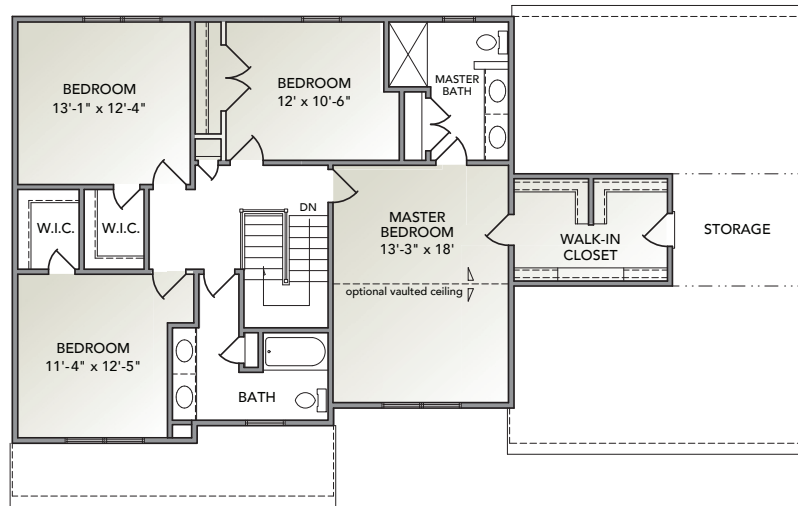
HIGHLAND RIDGE at Winding Hills

EGStoltzfus Neighborhood Homes | [www.egstoltzfus.com](http://www.egstoltzfus.com)

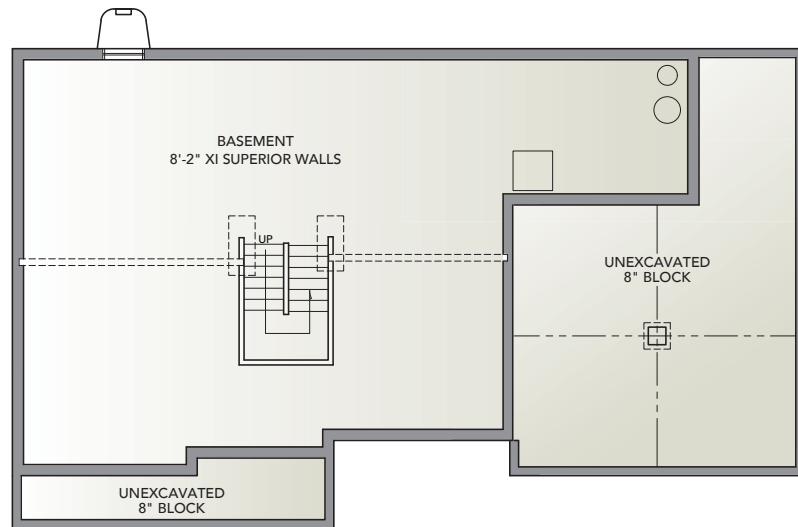
FIRST FLOOR



SECOND FLOOR



BASEMENT



Information presented is for illustrative purposes only. Room dimensions and details may vary based on options and elevation selected. Not all features are shown. Please ask a New Home Sales Specialist for complete information. EGStoltzfus reserves the right to make changes without notice. Copyright ©2020 EGStoltzfus Homes.

