

Cambridge



AMERICAN



STANDARD



HERITAGE

- Open floorplan with formal dining room and eat-in kitchen
- Owner's entry with easy access to family room and kitchen
- Spacious family room
- First-floor laundry off kitchen
- Den/flex space near front of house
- Five second-floor bedrooms including master suite
- Walk-in attic storage space

Information presented is for illustrative purposes only. Room dimensions and details may vary based on options and elevation selected. Not all features are shown. Please ask a New Home Sales Specialist for complete information. EGStoltzfus reserves the right to make changes without notice. Copyright ©2020 EGStoltzfus Homes.

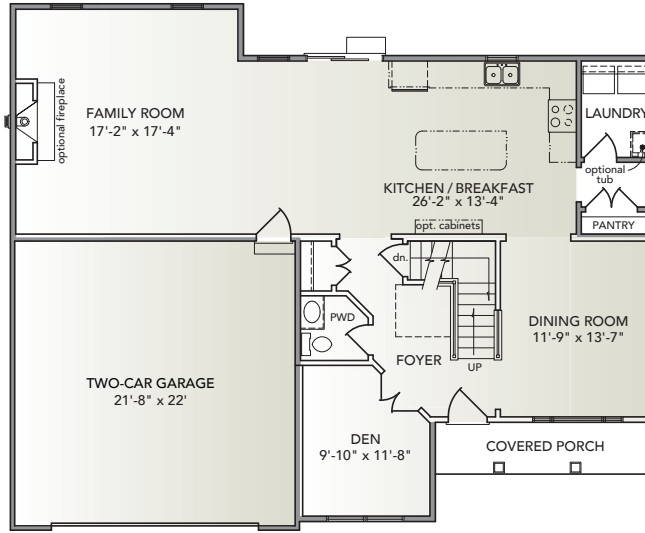


HIGHLAND RIDGE at Winding Hills

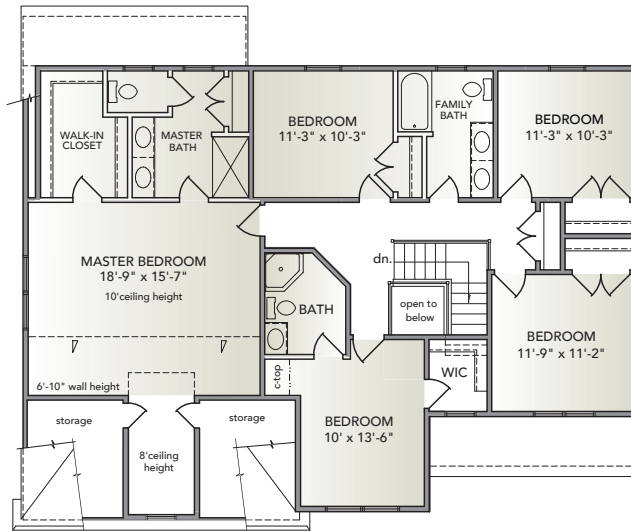
EGStoltzfus Neighborhood Homes | www.egstoltzfus.com

5 BEDS | 3 1/2 BATHS | 2-CAR GARAGE | 2,808 SQ. FEET | TWO STORY

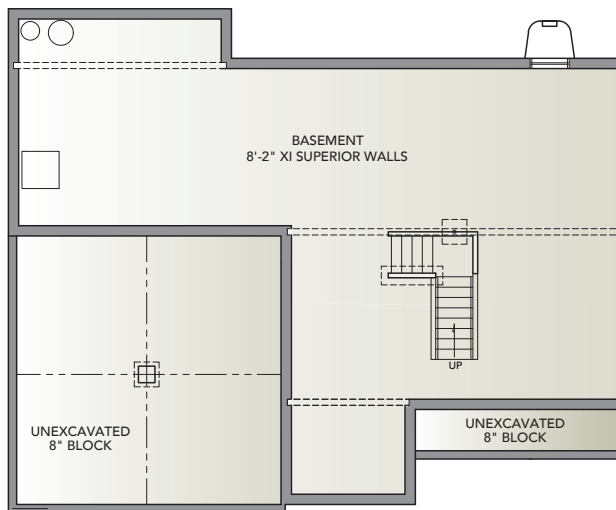
FIRST FLOOR



SECOND FLOOR



BASEMENT



Information presented is for illustrative purposes only. Room dimensions and details may vary based on options and elevation selected. Not all features are shown. Please ask a New Home Sales Specialist for complete information. EGStoltzfus reserves the right to make changes without notice. Copyright ©2020 EGStoltzfus Homes.

