



SIMILAR HOME

Carlton

4 BEDS | 2 1/2 BATHS | 2-CAR GARAGE | 2,546 SQ FEET | TWO STORY

- Open floorplan with formal dining room and eat-in kitchen
- Owner's entry with easy access to powder room/coat closet and main living area
- Walk-in pantry off kitchen
- Butler's pantry between kitchen and dining room
- Spacious family room
- Convenient second-floor laundry
- Generous master suite with large walk-in closet and master bath
- Bonus garage storage space



STANDARD



AMERICAN



HERITAGE

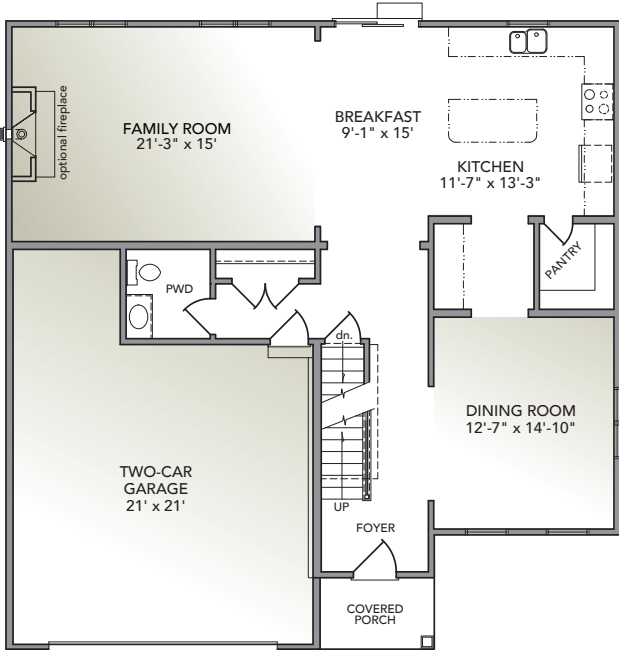
Information presented is for illustrative purposes only. Room dimensions and details may vary based on options and elevation selected. Not all features are shown. Please ask a New Home Sales Specialist for complete information. EGStoltzfus reserves the right to make changes without notice. Copyright ©2020 EGStoltzfus Homes.



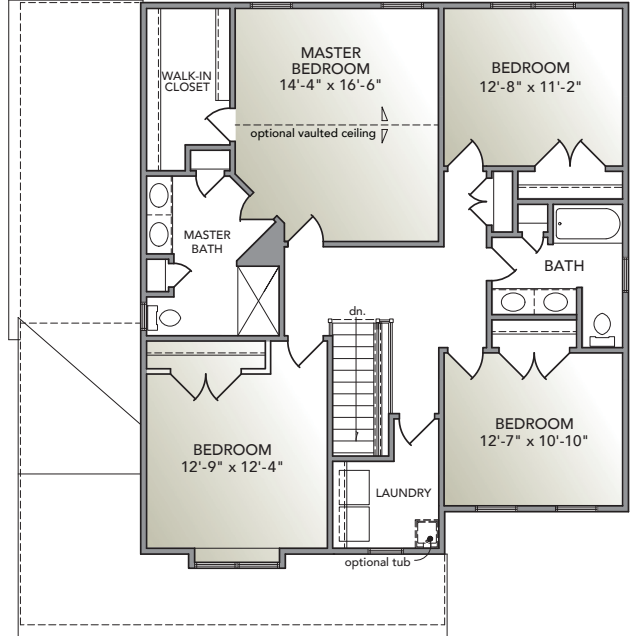
HIGHLAND RIDGE at Winding Hills

EGStoltzfus Neighborhood Homes | www.egstoltzfus.com

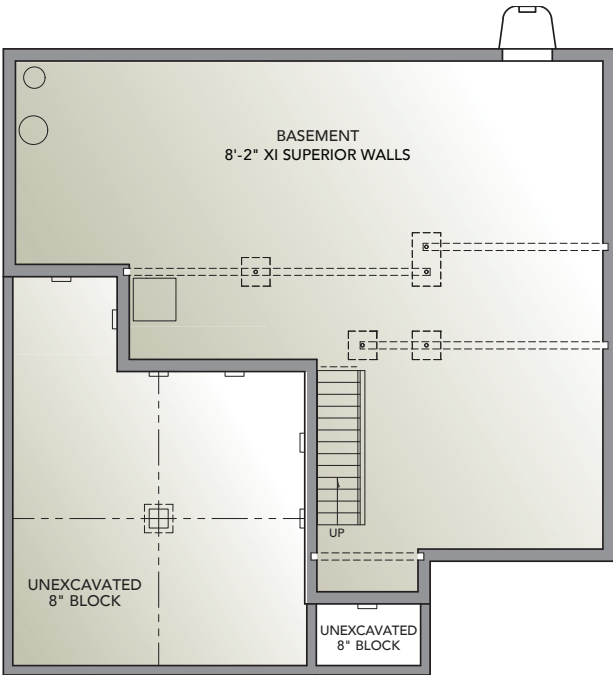
FIRST FLOOR



SECOND FLOOR



BASEMENT



Information presented is for illustrative purposes only. Room dimensions and details may vary based on options and elevation selected. Not all features are shown. Please ask a New Home Sales Specialist for complete information. EGStoltzfus reserves the right to make changes without notice. Copyright ©2020 EGStoltzfus Homes.

