



AMERICAN

# Dalton



STANDARD



HERITAGE

4 BEDS | 2 1/2 BATHS | 2-CAR GARAGE | 2,381 SQ. FEET | TWO STORY

- Open floorplan with 2-story foyer, formal dining room and eat-in kitchen
- Owner's entry with easy access to powder room, coat closet and main foyer
- Large family room
- Walk-in pantry off kitchen
- Convenient second-floor laundry
- Spacious master suite with 2 walk-in closets
- Bonus walk-in attic storage space

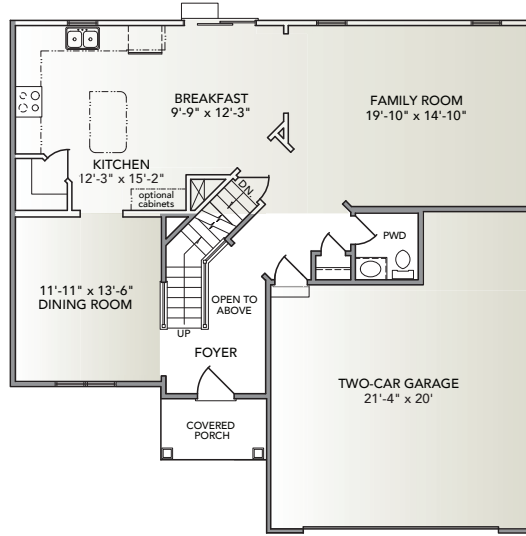
Information presented is for illustrative purposes only. Room dimensions and details may vary based on options and elevation selected. Not all features are shown. Please ask a New Home Sales Specialist for complete information. EGStoltzfus reserves the right to make changes without notice. Copyright ©2020 EGStoltzfus Homes.



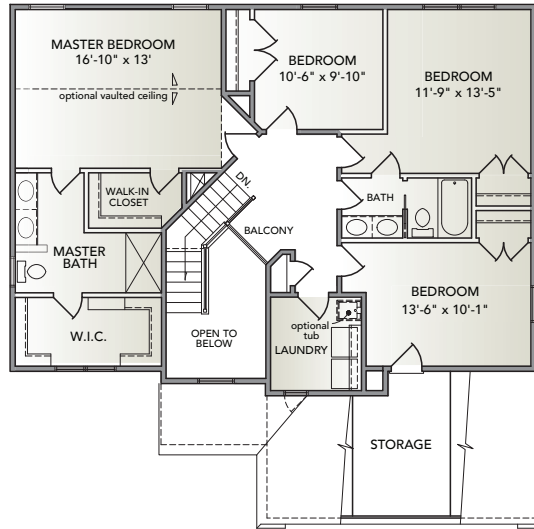
HIGHLAND RIDGE at Winding Hills

EGStoltzfus Neighborhood Homes | [www.egstoltzfus.com](http://www.egstoltzfus.com)

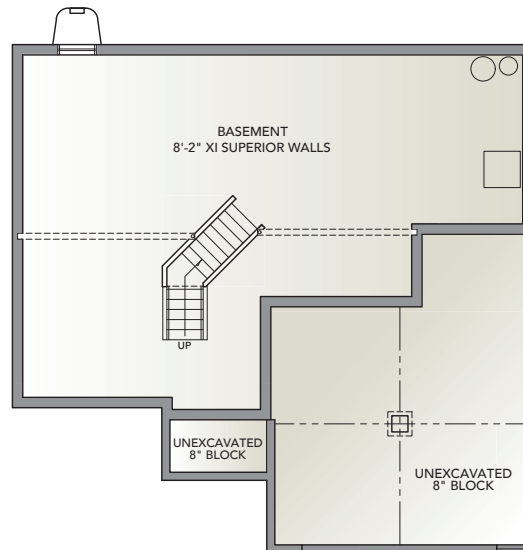
FIRST FLOOR



SECOND FLOOR



BASEMENT



Information presented is for illustrative purposes only. Room dimensions and details may vary based on options and elevation selected. Not all features are shown. Please ask a New Home Sales Specialist for complete information. EGStoltzfus reserves the right to make changes without notice. Copyright ©2020 EGStoltzfus Homes.

