

Glenwood



AMERICAN



CLASSIC



HERITAGE

- Open floorplan with formal dining room and eat-in kitchen
- Owner's entry with easy access to kitchen, laundry and powder room
- Walk-in pantry off kitchen
- Two-story foyer with plant shelf
- Switch back staircase facing family room
- Spacious master suite with large walk-in closet
- Two walk-in closets in spare bedroom #3

Information presented is for illustrative purposes only. Room dimensions and details may vary based on options and elevation selected. Not all features are shown. Please ask a New Home Sales Specialist for complete information. EGStoltzfus reserves the right to make changes without notice. Copyright ©2020 EGStoltzfus Homes.

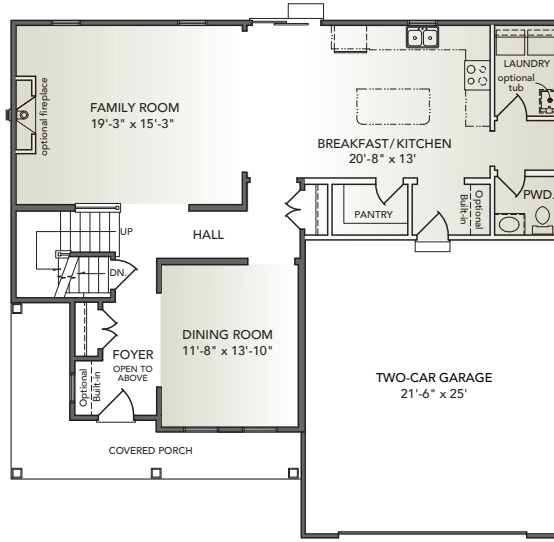


HIGHLAND RIDGE at Winding Hills

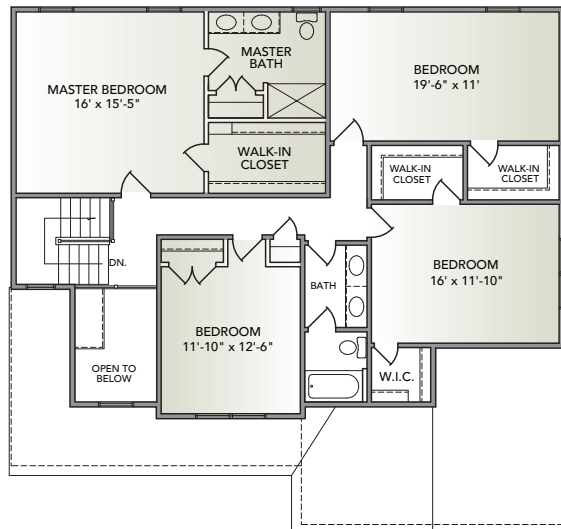
EGStoltzfus Neighborhood Homes | www.egstoltzfus.com

4 BEDS | 2 1/2 BATHS | 2-CAR GARAGE | 2,655 SQ. FEET | TWO STORY

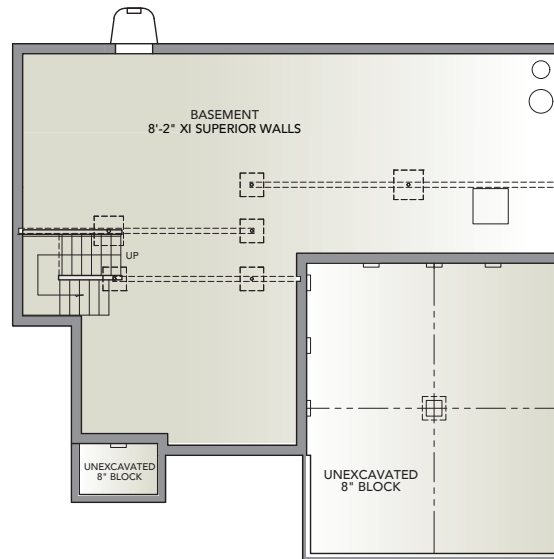
FIRST FLOOR



SECOND FLOOR



BASEMENT



Information presented is for illustrative purposes only. Room dimensions and details may vary based on options and elevation selected. Not all features are shown. Please ask a New Home Sales Specialist for complete information. EGStoltzfus reserves the right to make changes without notice. Copyright ©2020 EGStoltzfus Homes.

