

# Hensley

3 BEDS | 2 BATHS | 2-CAR GARAGE | 1,829 SQ FEET | ONE STORY



AMERICAN



STANDARD



HERITAGE

- Open single-story floorplan with formal dining room and eat-in kitchen
- Owner's entry with easy access to laundry room
- Spacious great room
- Walk-in pantry off kitchen
- Spacious master suite with 2 walk-in closets

Information presented is for illustrative purposes only. Room dimensions and details may vary based on options and elevation selected. Not all features are shown. Please ask a New Home Sales Specialist for complete information. EGStoltzfus reserves the right to make changes without notice. Copyright ©2020 EGStoltzfus Homes.



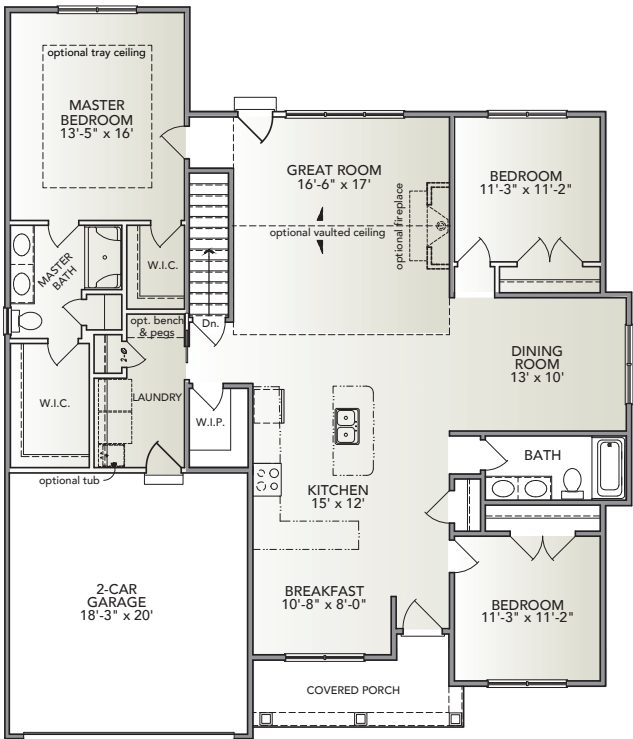
**EGStoltzfus**

BUILDING ONE STORY AT A TIME

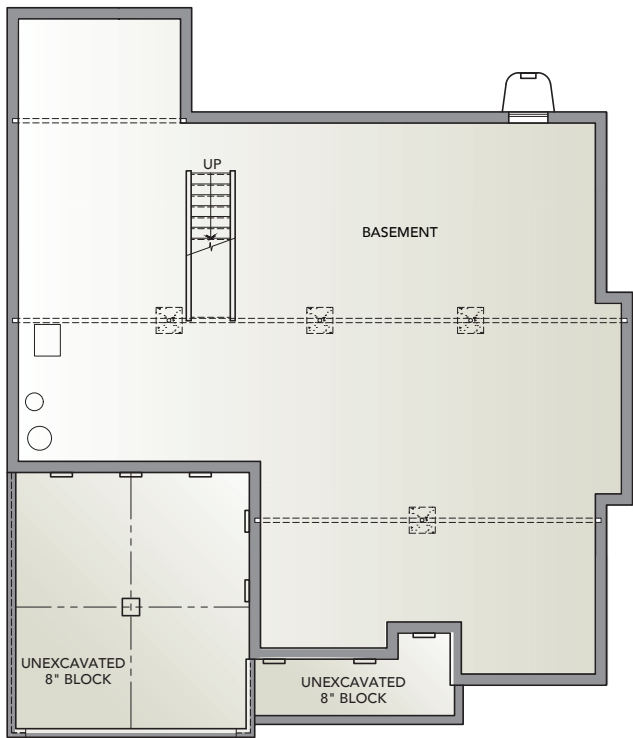
**HIGHLAND RIDGE at Winding Hills**

**EGStoltzfus Neighborhood Homes | [www.egstoltzfus.com](http://www.egstoltzfus.com)**

FIRST FLOOR



BASEMENT



Information presented is for illustrative purposes only. Room dimensions and details may vary based on options and elevation selected. Not all features are shown. Please ask a New Home Sales Specialist for complete information. EGStoltzfus reserves the right to make changes without notice. Copyright ©2020 EGStoltzfus Homes.

