



AMERICAN

Jameson

- Open floorplan with spacious family room and eat-in kitchen
- Owner's entry with easy access to laundry room and coat closet
- Spacious master suite with large walk-in closet
- Bonus walk-in attic storage space
- Large second-floor family bathroom off main hallway



STANDARD



AMERICAN



HERITAGE

Information presented is for illustrative purposes only. Room dimensions and details may vary based on options and elevation selected. Not all features are shown. Please ask a New Home Sales Specialist for complete information. EGStoltzfus reserves the right to make changes without notice. Copyright ©2020 EGStoltzfus Homes.

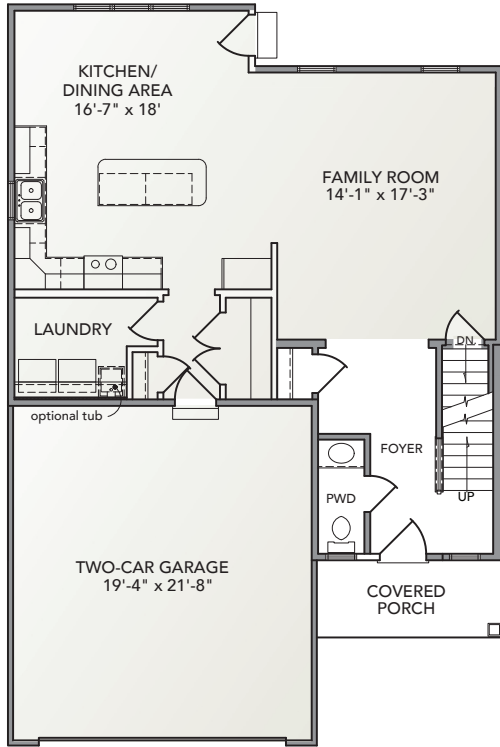


HIGHLAND RIDGE at Winding Hills

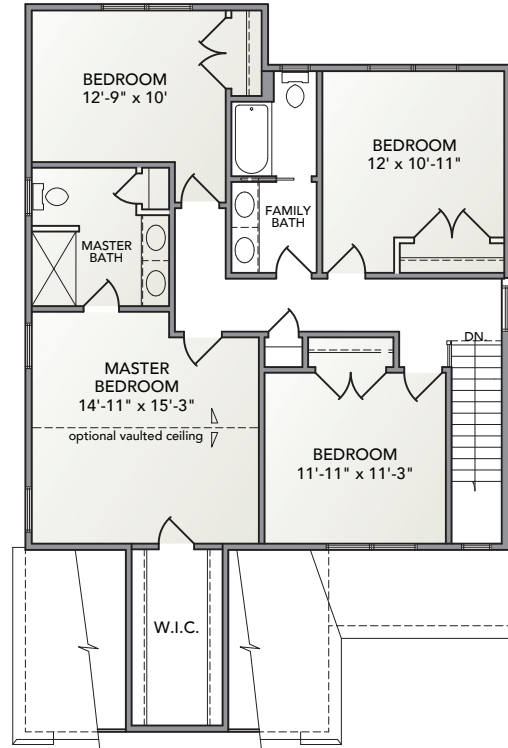
EGStoltzfus Neighborhood Homes | www.egstoltzfus.com

4 BEDS | 2 1/2 BATHS | 2-CAR GARAGE | 2,071 SQ. FEET | TWO STORY

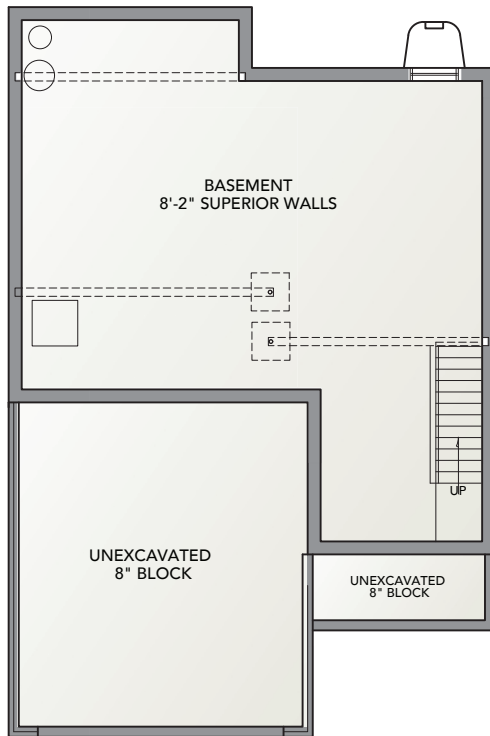
FIRST FLOOR



SECOND FLOOR



BASEMENT



Information presented is for illustrative purposes only. Room dimensions and details may vary based on options and elevation selected. Not all features are shown. Please ask a New Home Sales Specialist for complete information. EGStoltzfus reserves the right to make changes without notice. Copyright ©2020 EGStoltzfus Homes.

