



# Riley

4 BEDS | 2 1/2 BATHS | 2-CAR GARAGE | 2,384 SQ FEET | TWO STORY

- Open floorplan with generous formal dining room and eat-in kitchen
- Owner's entry with easy access to kitchen and family room
- Pantry and laundry room off kitchen
- Spacious master suite with walk-in closet and access to bonus attic storage
- Guest suite with walk-in closet



CLASSIC



AMERICAN



HERITAGE

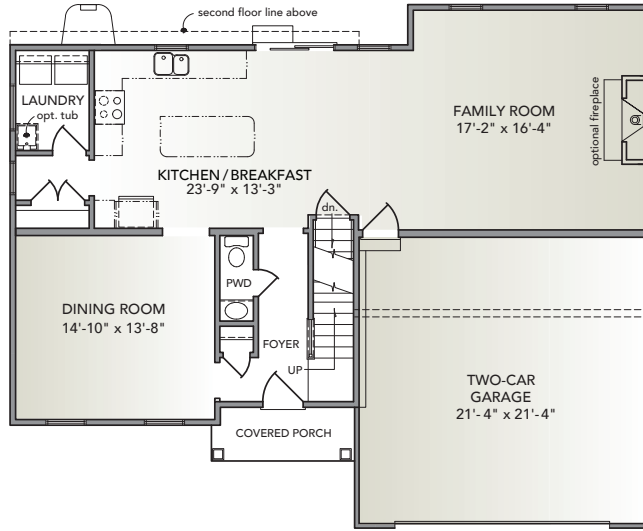
Information presented is for illustrative purposes only. Room dimensions and details may vary based on options and elevation selected. Not all features are shown. Please ask a New Home Sales Specialist for complete information. EGStoltzfus reserves the right to make changes without notice. Copyright ©2020 EGStoltzfus Homes.



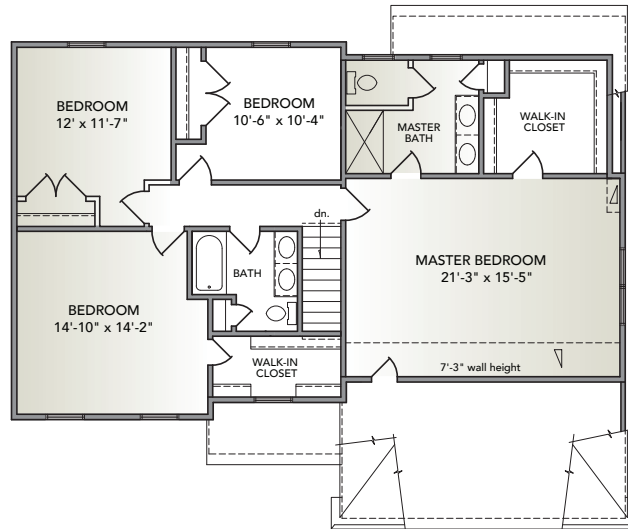
HIGHLAND RIDGE at Winding Hills

EGStoltzfus Neighborhood Homes | [www.egstoltzfus.com](http://www.egstoltzfus.com)

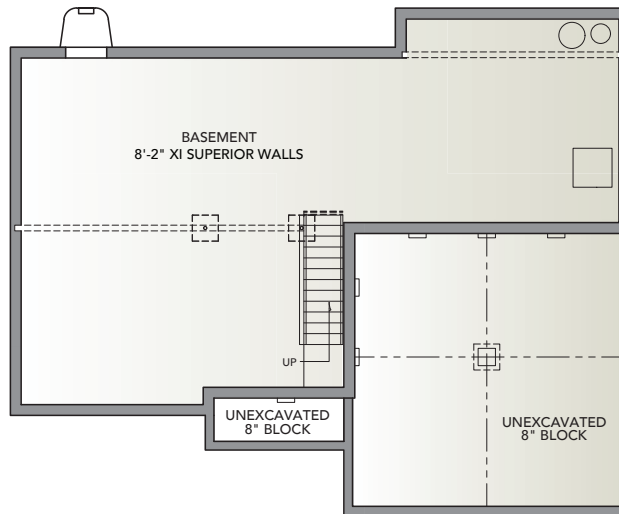
FIRST FLOOR



SECOND FLOOR



BASEMENT



Information presented is for illustrative purposes only. Room dimensions and details may vary based on options and elevation selected. Not all features are shown. Please ask a New Home Sales Specialist for complete information. EGStoltzfus reserves the right to make changes without notice. Copyright ©2020 EGStoltzfus Homes.

