



SIMILAR HOME

Warren

4 BEDS | 2 1/2 BATHS | 2-CAR GARAGE | 2,480 SQ FEET | TWO STORY

- Open floorplan with formal dining room and eat-in kitchen
- First-floor master suite with walk-in closet and master bathroom
- Owner's entry with easy access to pantry, powder room and laundry
- Switch back staircase facing living room
- All second-floor bedrooms have walk-in closets
- Bonus walk-in attic storage space above garage
- Large front covered porch



CLASSIC



AMERICAN



HERITAGE

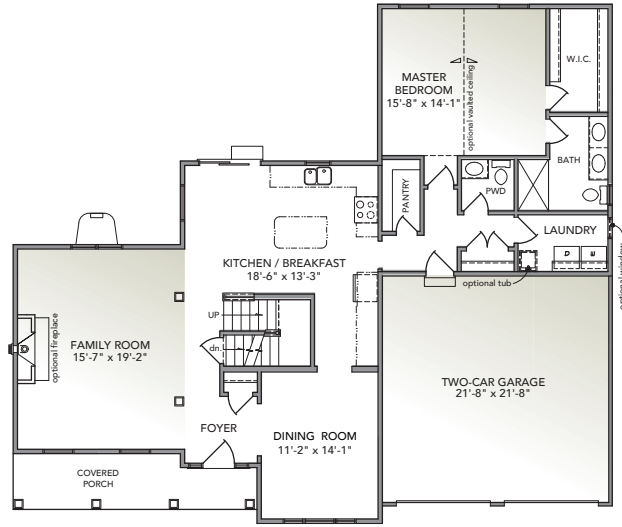
Information presented is for illustrative purposes only. Room dimensions and details may vary based on options and elevation selected. Not all features are shown. Please ask a New Home Sales Specialist for complete information. EGStoltzfus reserves the right to make changes without notice. Copyright ©2020 EGStoltzfus Homes.



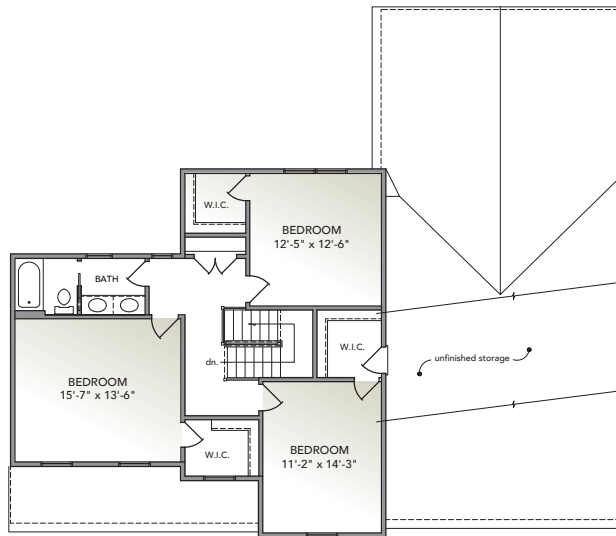
HIGHLAND RIDGE at Winding Hills

EGStoltzfus Neighborhood Homes | www.egstoltzfus.com

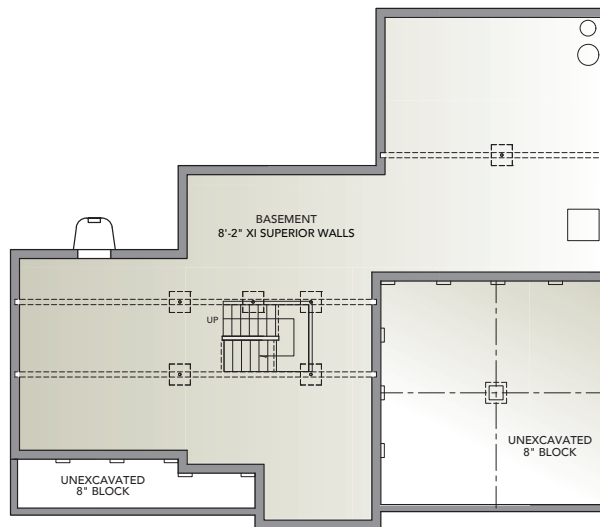
FIRST FLOOR



SECOND FLOOR



BASEMENT



Information presented is for illustrative purposes only. Room dimensions and details may vary based on options and elevation selected. Not all features are shown. Please ask a New Home Sales Specialist for complete information. EGStoltzfus reserves the right to make changes without notice. Copyright ©2020 EGStoltzfus Homes.

