



Windsor

4 BEDS | 3 1/2 BATHS | 2-CAR GARAGE | 3,164 SQ FEET | TWO STORY

- Open floorplan with formal dining room and eat-in kitchen
- First-floor master suite with 2-person walk-in closet and private bath
- Owner's entry with easy access to drop zone/mudroom, laundry and pantry
- Switch back staircase facing family room
- Jack & Jill bath for 2 spare bedrooms upstairs
- Bonus second-floor media room/flex space
- Second-floor guest suite with private bathroom and walk-in closet
- Large covered front porch



STANDARD



AMERICAN



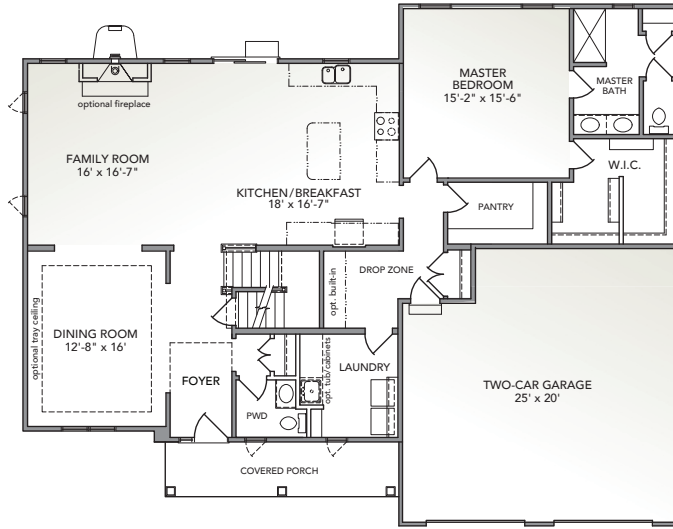
HERITAGE

Information presented is for illustrative purposes only. Room dimensions and details may vary based on options and elevation selected. Not all features are shown. Please ask a New Home Sales Specialist for complete information. EGStoltzfus reserves the right to make changes without notice. Copyright ©2020 EGStoltzfus Homes.

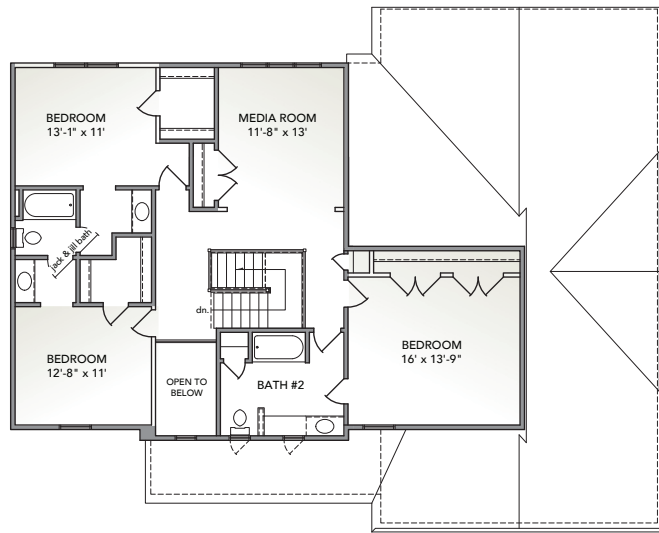


HIGHLAND RIDGE at Winding Hills
 EGStoltzfus Neighborhood Homes | www.egstoltzfus.com

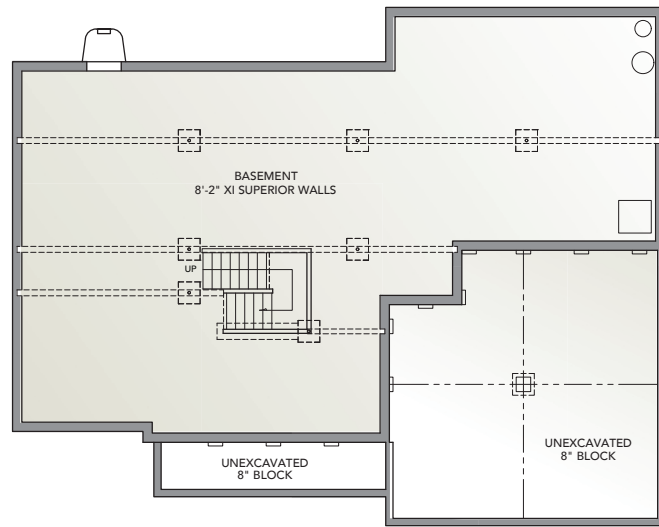
FIRST FLOOR



SECOND FLOOR



BASEMENT



Information presented is for illustrative purposes only. Room dimensions and details may vary based on options and elevation selected. Not all features are shown. Please ask a New Home Sales Specialist for complete information. EGStoltzfus reserves the right to make changes without notice. Copyright ©2020 EGStoltzfus Homes.

