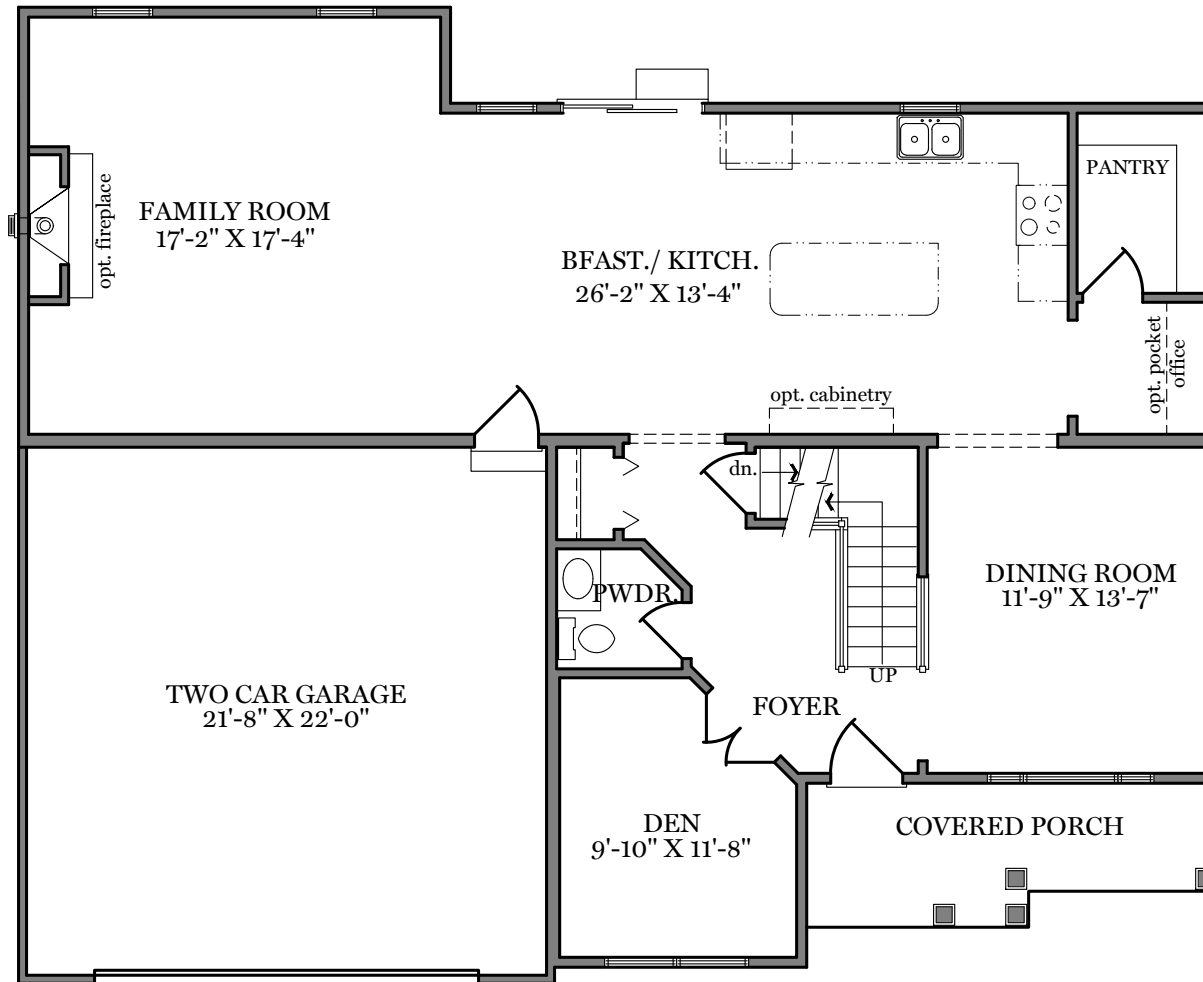
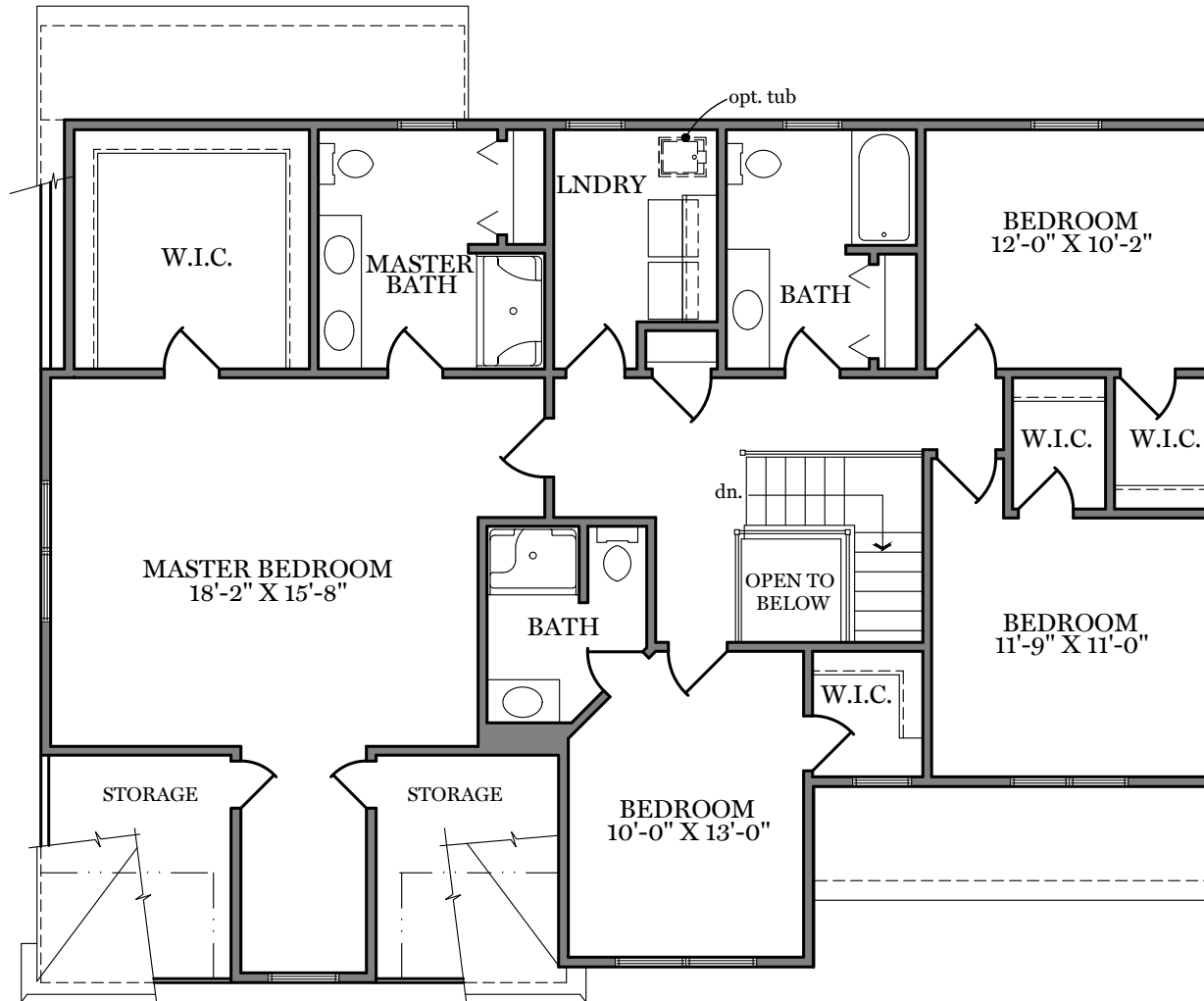


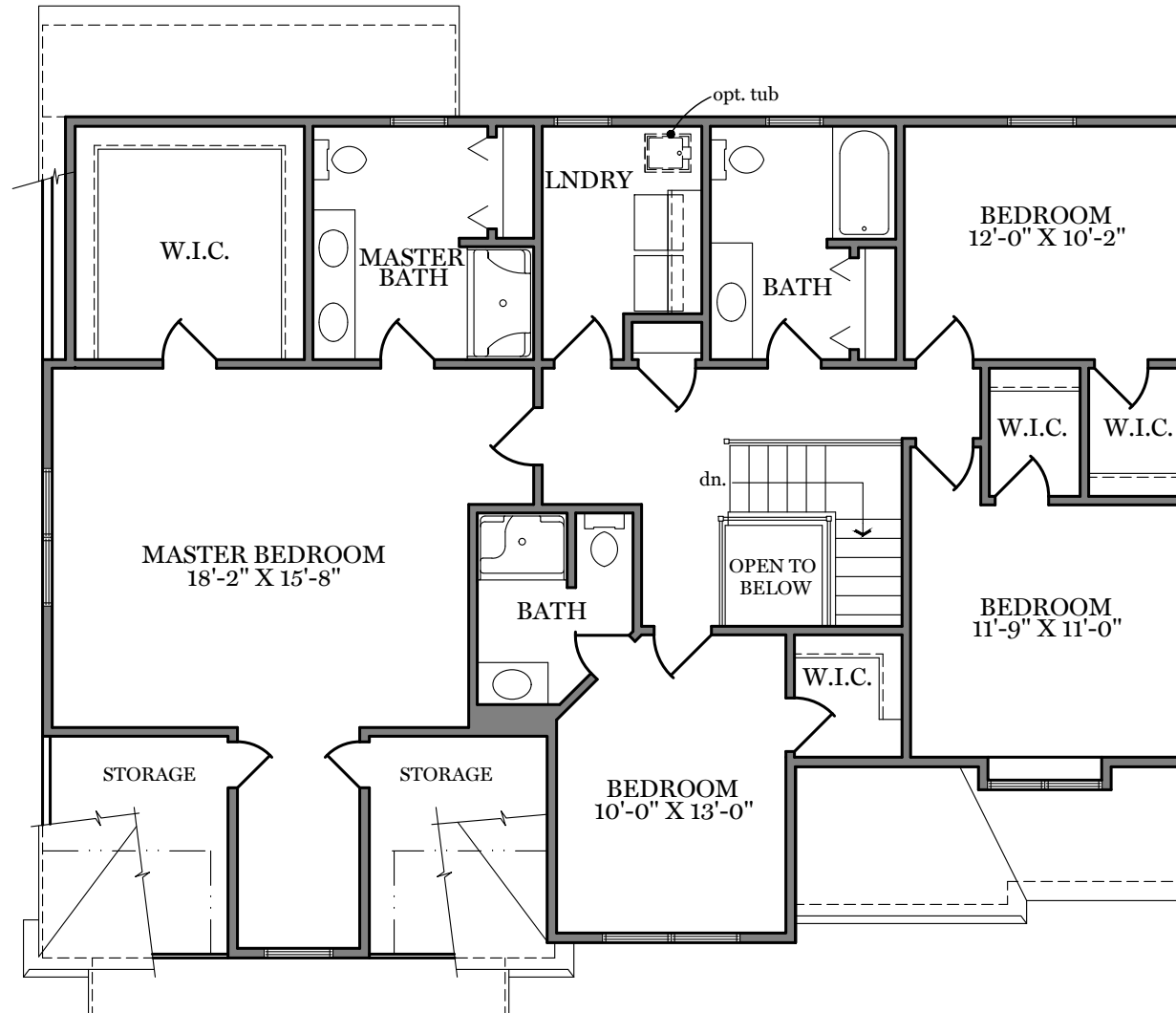
## First Floor Plan - 1,264 sf

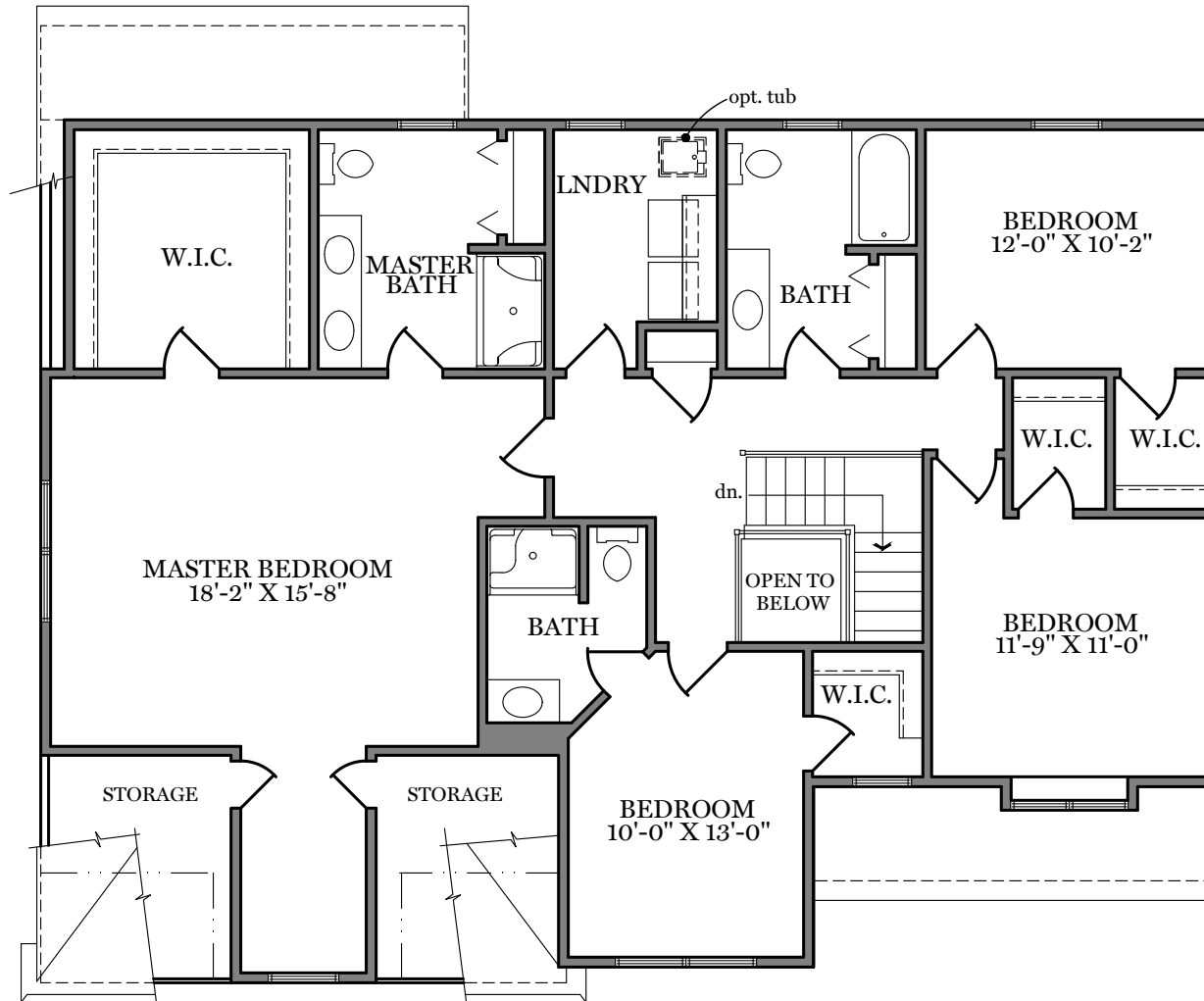
"CAMBRIDGE CLASSIC & HERITAGE"

ALL PRINTS ARE FOR ILLUSTRATION PURPOSES AND REPRESENT HOMES IN HIGHLAND RIDGE. ROOM SIZES ARE APPROXIMATE. CONTACT SALES AGENT FOR MORE INFORMATION.

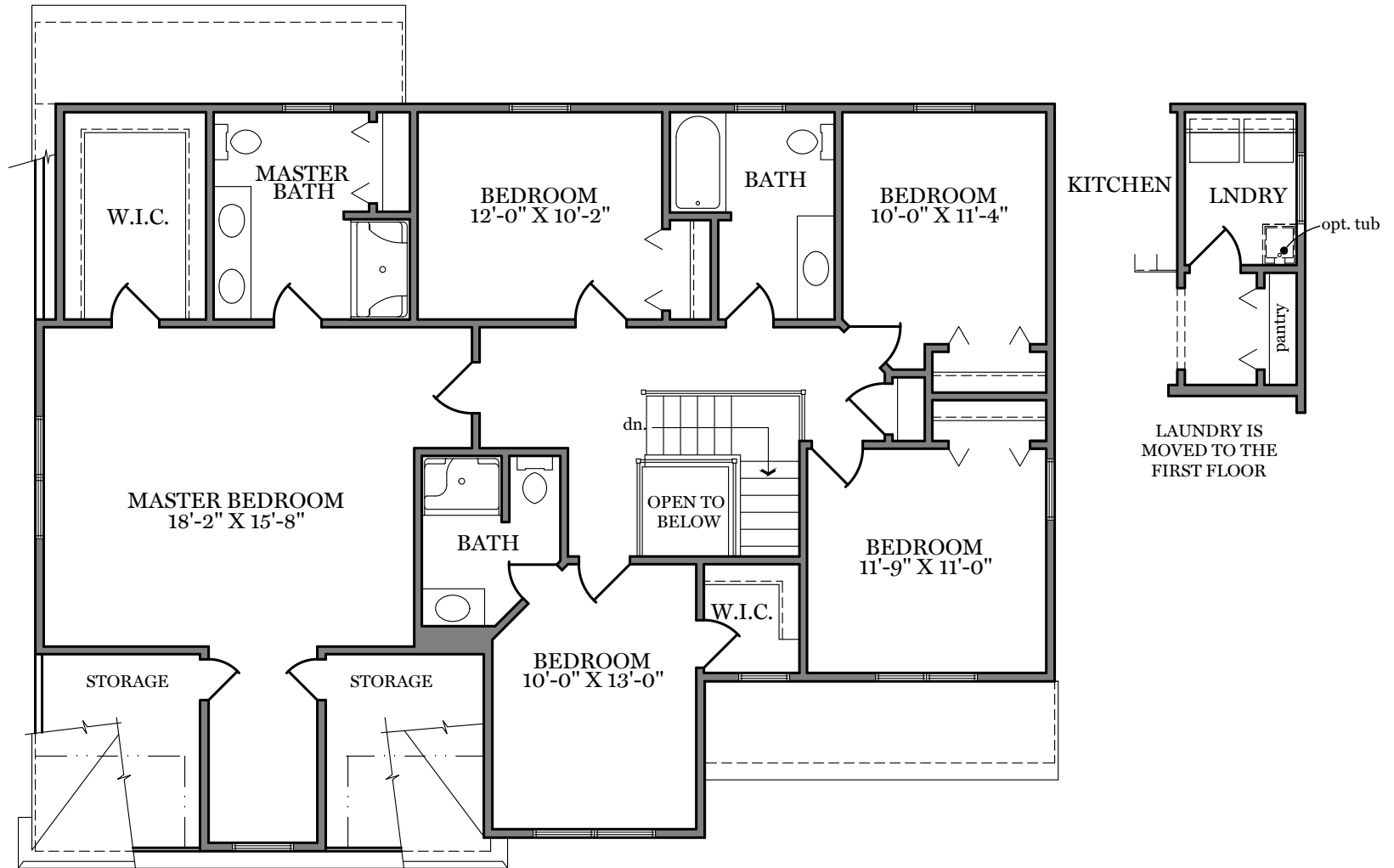








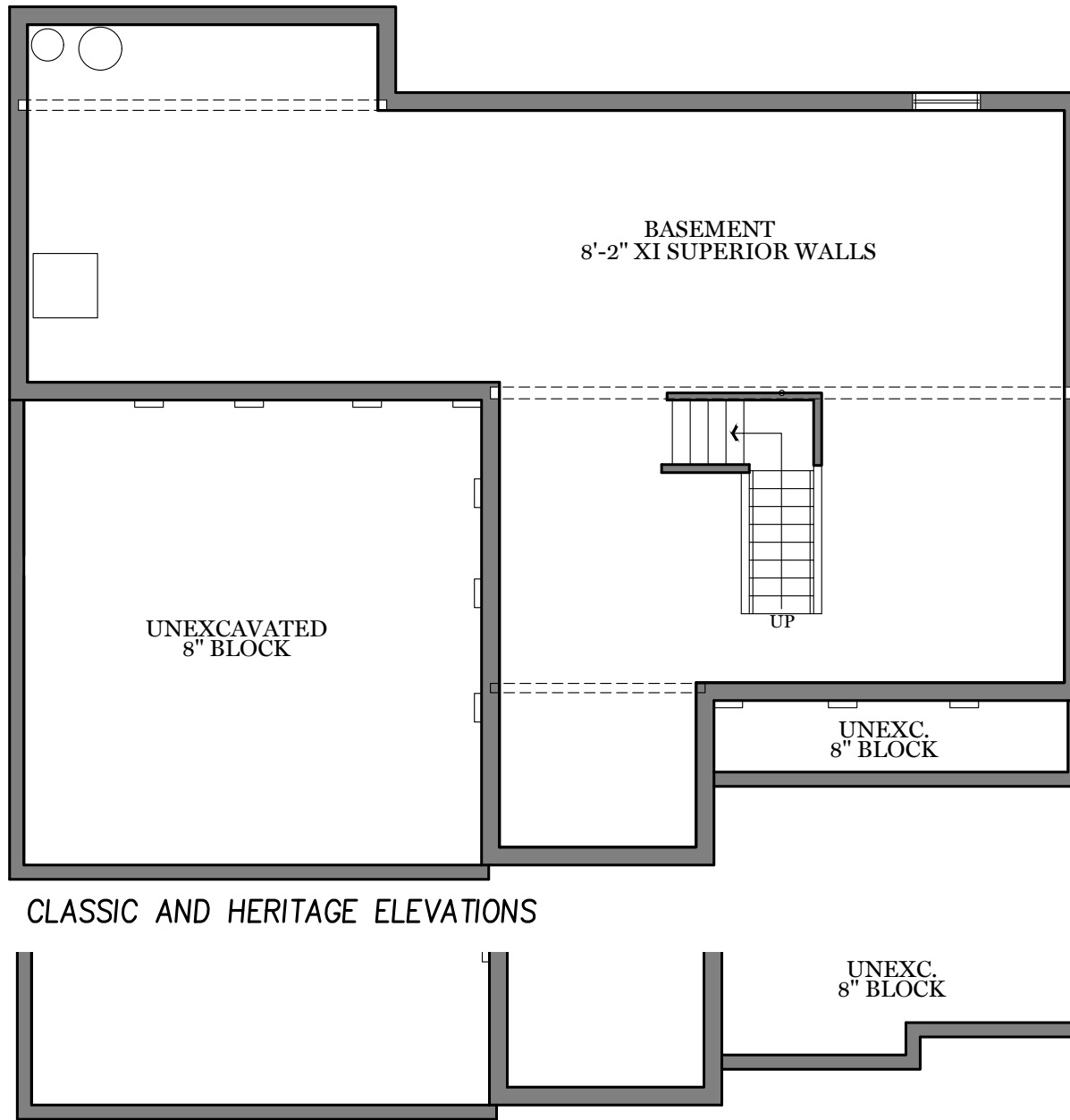
# Highland Ridge



## Optional 5 Bed Second Floor Plan 1,544 sf

"CAMBRIDGE"

ALL PRINTS ARE FOR ILLUSTRATION PURPOSES AND REPRESENT HOMES IN HIGHLAND RIDGE. ROOM SIZES ARE APPROXIMATE. CONTACT SALES AGENT FOR MORE INFORMATION.



BASEMENT  
8'-2" XI SUPERIOR WALLS

UNEXCAVATED  
8" BLOCK

UP

UNEXC.  
8" BLOCK

CLASSIC AND HERITAGE ELEVATIONS

UNEXC.  
8" BLOCK

AMERICAN ELEVATION

Foundation

"CAMBRIDGE ALL ELEVATIONS"



— Front Elevation - 2,808 sf —

"CAMBRIDGE CLASSIC"

ALL PRINTS ARE FOR ILLUSTRATION  
PURPOSES AND REPRESENT  
HOMES IN HIGHLAND RIDGE  
ROOM SIZES ARE APPROXIMATE.  
CONTACT SALES AGENT FOR  
MORE INFORMATION





— Front Elevation - 2,808 sf —

"CAMBRIDGE AMERICAN"

ALL PRINTS ARE FOR ILLUSTRATION  
PURPOSES AND REPRESENT  
HOMES IN HIGHLAND RIDGE  
ROOM SIZES ARE APPROXIMATE.  
CONTACT SALES AGENT FOR  
MORE INFORMATION

# Highland Ridge



— Front Elevation - 2,808 sf —

"CAMBRIDGE HERITAGE"

ALL PRINTS ARE FOR ILLUSTRATION  
PURPOSES AND REPRESENT  
HOMES IN HIGHLAND RIDGE  
ROOM SIZES ARE APPROXIMATE.  
CONTACT SALES AGENT FOR  
MORE INFORMATION