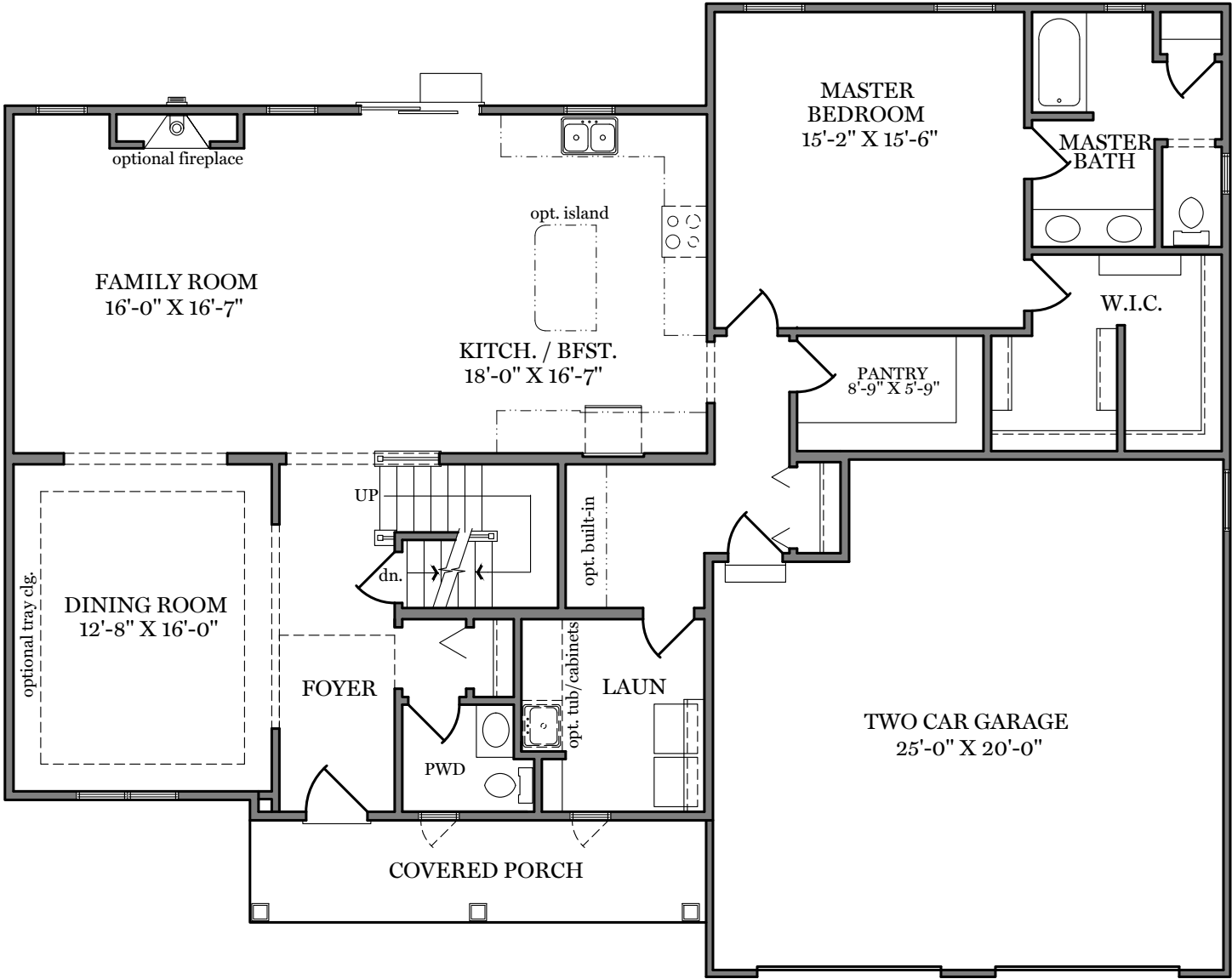


Eagles View

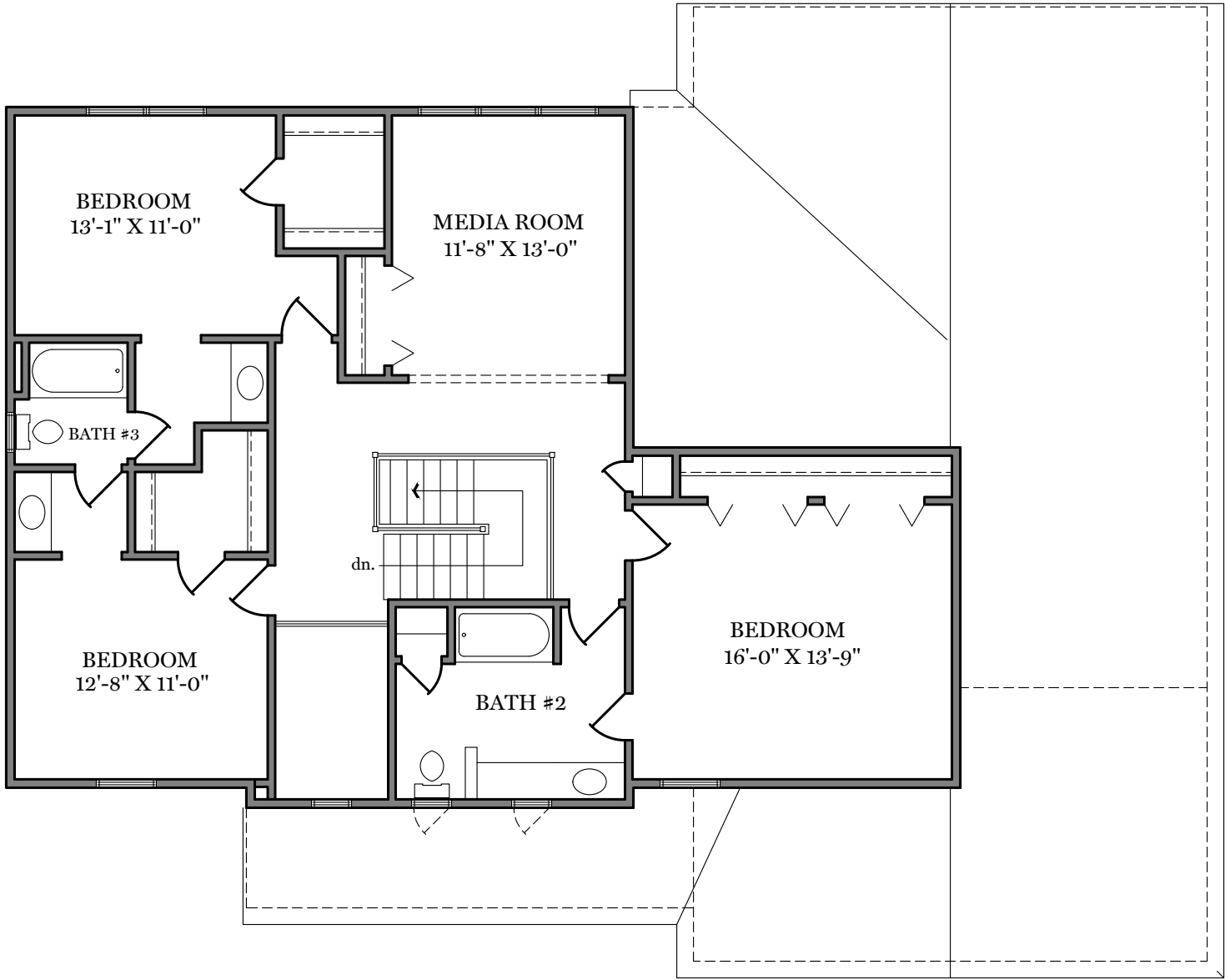


First Floor Plan - 1,802 sf

"WINDSOR"

ALL PRINTS ARE FOR ILLUSTRATION PURPOSES AND REPRESENT HOMES IN EAGLES VIEW. ROOM SIZES ARE APPROXIMATE. CONTACT SALES AGENT FOR MORE INFORMATION.

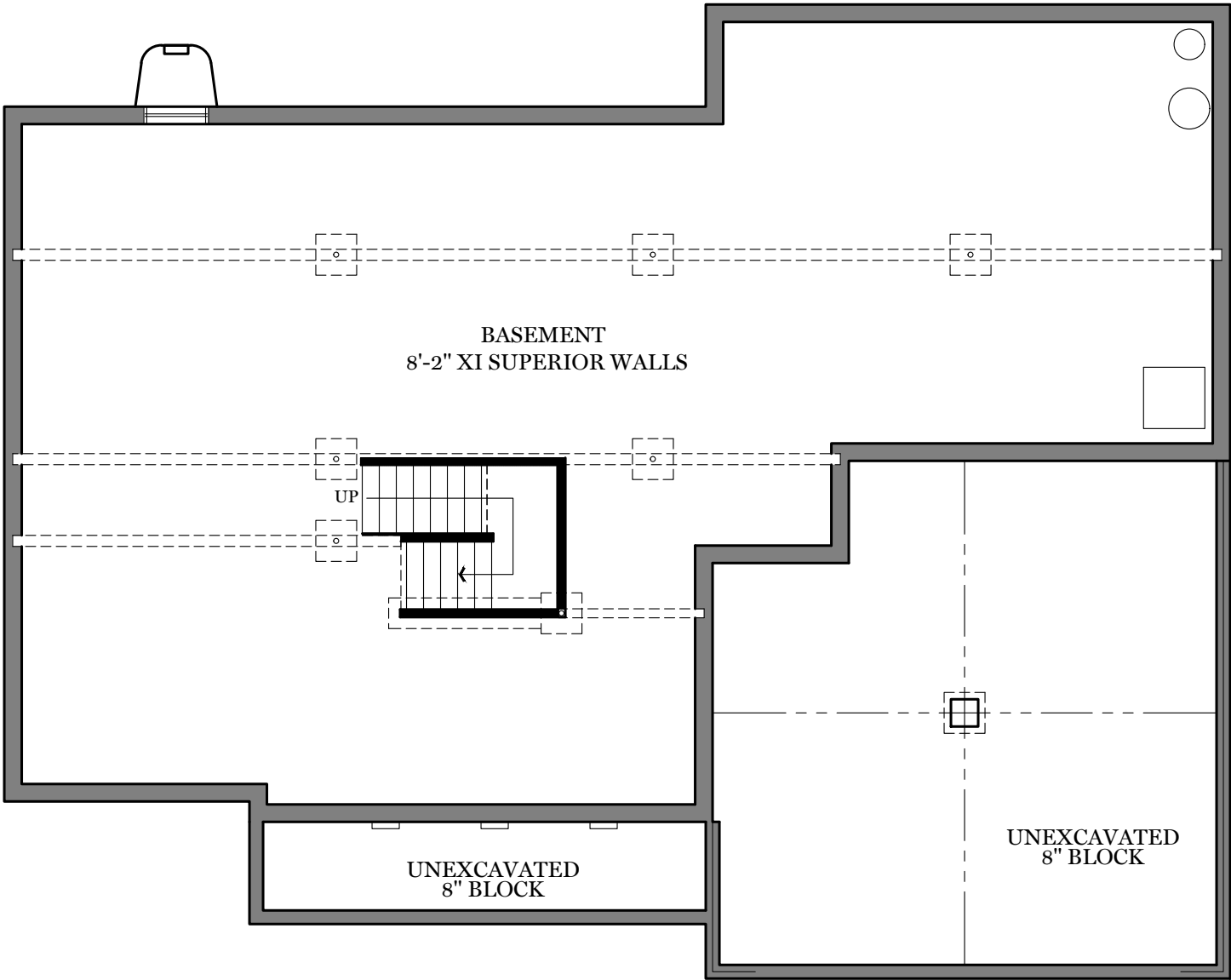
Eagles View



Second Floor Plan - 1,362 sf
"WINDSOR"

ALL PRINTS ARE FOR ILLUSTRATION PURPOSES AND REPRESENT HOMES IN EAGLES VIEW. ROOM SIZES ARE APPROXIMATE. CONTACT SALES AGENT FOR MORE INFORMATION.

Eagles View



Foundation

"WINDSOR"

ALL PRINTS ARE FOR ILLUSTRATION PURPOSES AND REPRESENT HOMES IN EAGLES VIEW. ROOM SIZES ARE APPROXIMATE. CONTACT SALES AGENT FOR MORE INFORMATION.

Eagles View



Traditional Elevation - 3,164 sf

"WINDSOR"

ALL PRINTS ARE FOR ILLUSTRATION PURPOSES AND REPRESENT HOMES IN EAGLES VIEW. ROOM SIZES ARE APPROXIMATE. CONTACT SALES AGENT FOR MORE INFORMATION.

Eagles View



Classic Elevation - 3,164 sf

"WINDSOR"

ALL PRINTS ARE FOR ILLUSTRATION
PURPOSES AND REPRESENT
HOMES IN EAGLES VIEW
ROOM SIZES ARE APPROXIMATE.
CONTACT SALES AGENT FOR
MORE INFORMATION

Eagles View



American Elevation - 3,164 sf

"WINDSOR"

ALL PRINTS ARE FOR ILLUSTRATION PURPOSES AND REPRESENT HOMES IN EAGLES VIEW. ROOM SIZES ARE APPROXIMATE. CONTACT SALES AGENT FOR MORE INFORMATION.

Eagles View



Heritage Elevation - 3,164 sf

"WINDSOR"

ALL PRINTS ARE FOR ILLUSTRATION
PURPOSES AND REPRESENT
HOMES IN EAGLES VIEW
ROOM SIZES ARE APPROXIMATE.
CONTACT SALES AGENT FOR
MORE INFORMATION