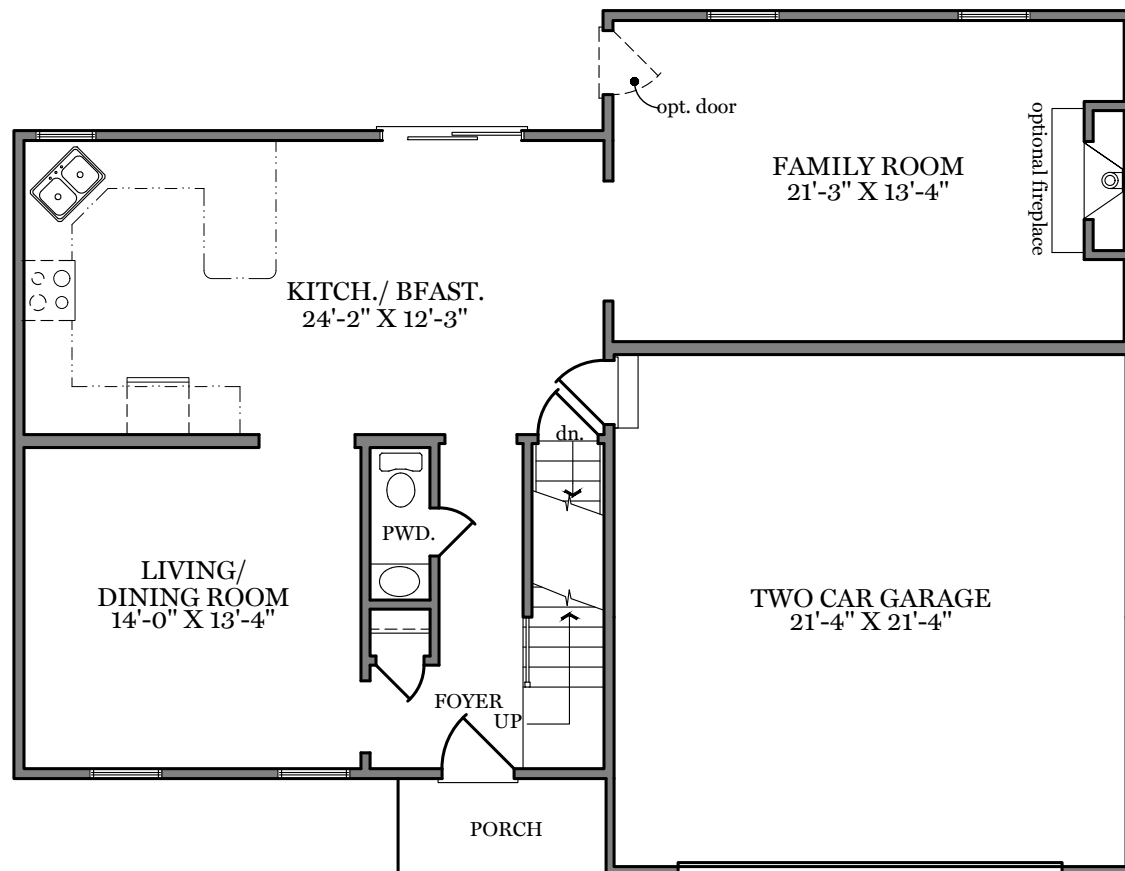


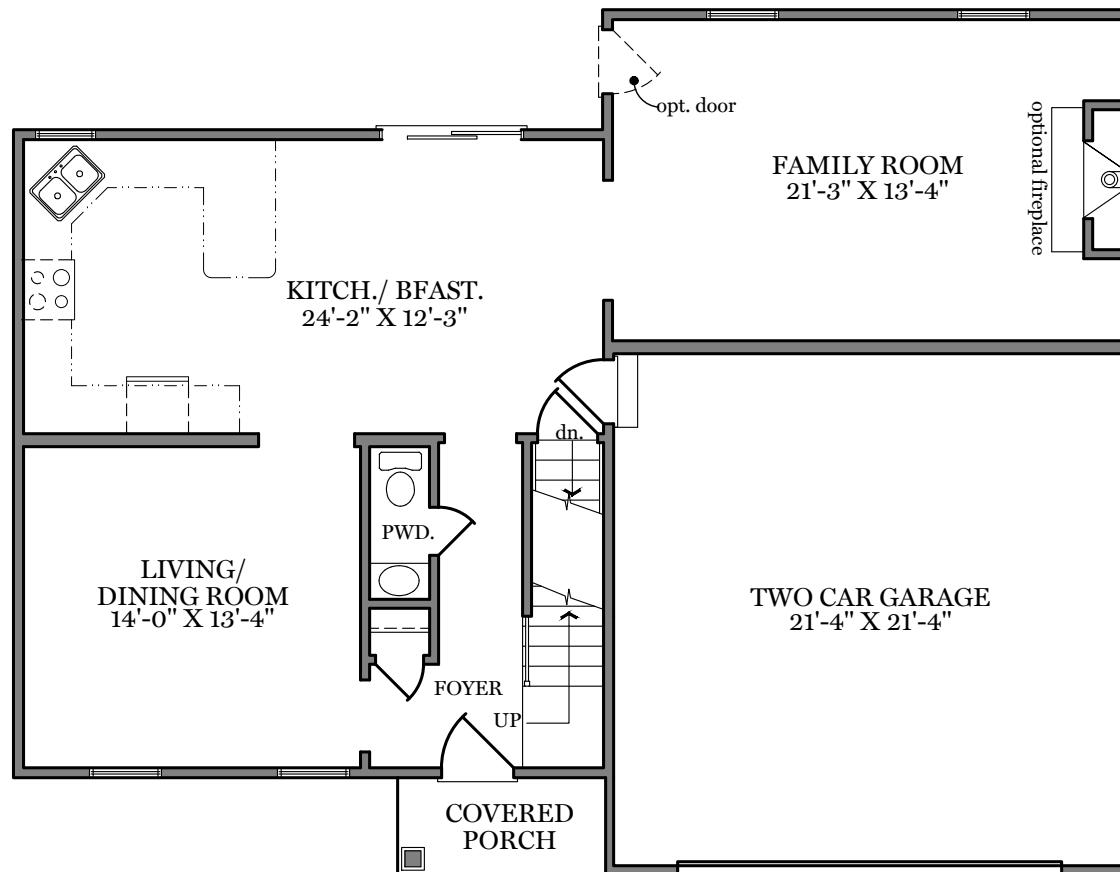
Fox Run Creek



First Floor Plan - 987 sf
"ADAMS" (Traditional and Classic)

ALL PRINTS ARE FOR ILLUSTRATION
PURPOSES AND REPRESENT
HOMES IN Fox Run Creek
ROOM SIZES ARE APPROXIMATE.
CONTACT SALES AGENT FOR
MORE INFORMATION

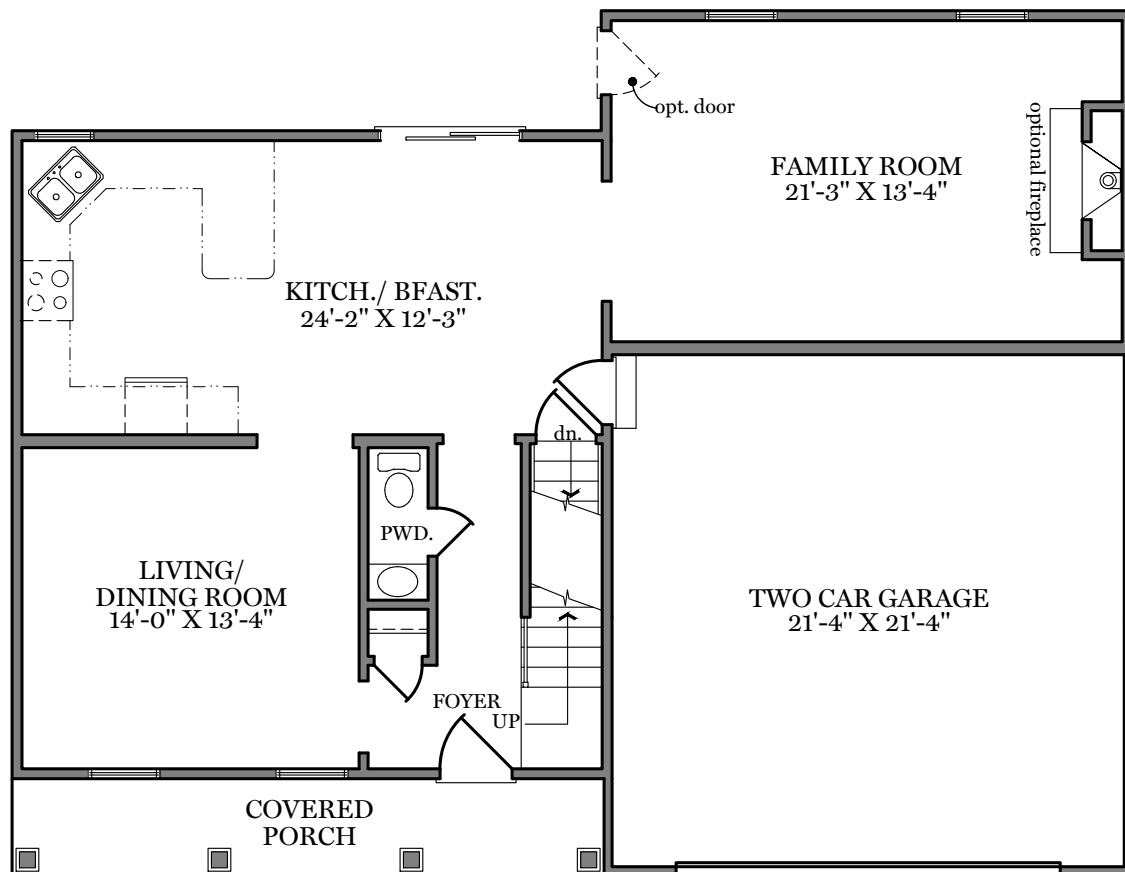
Fox Run Creek



First Floor Plan - 987 sf
"ADAMS" (American)

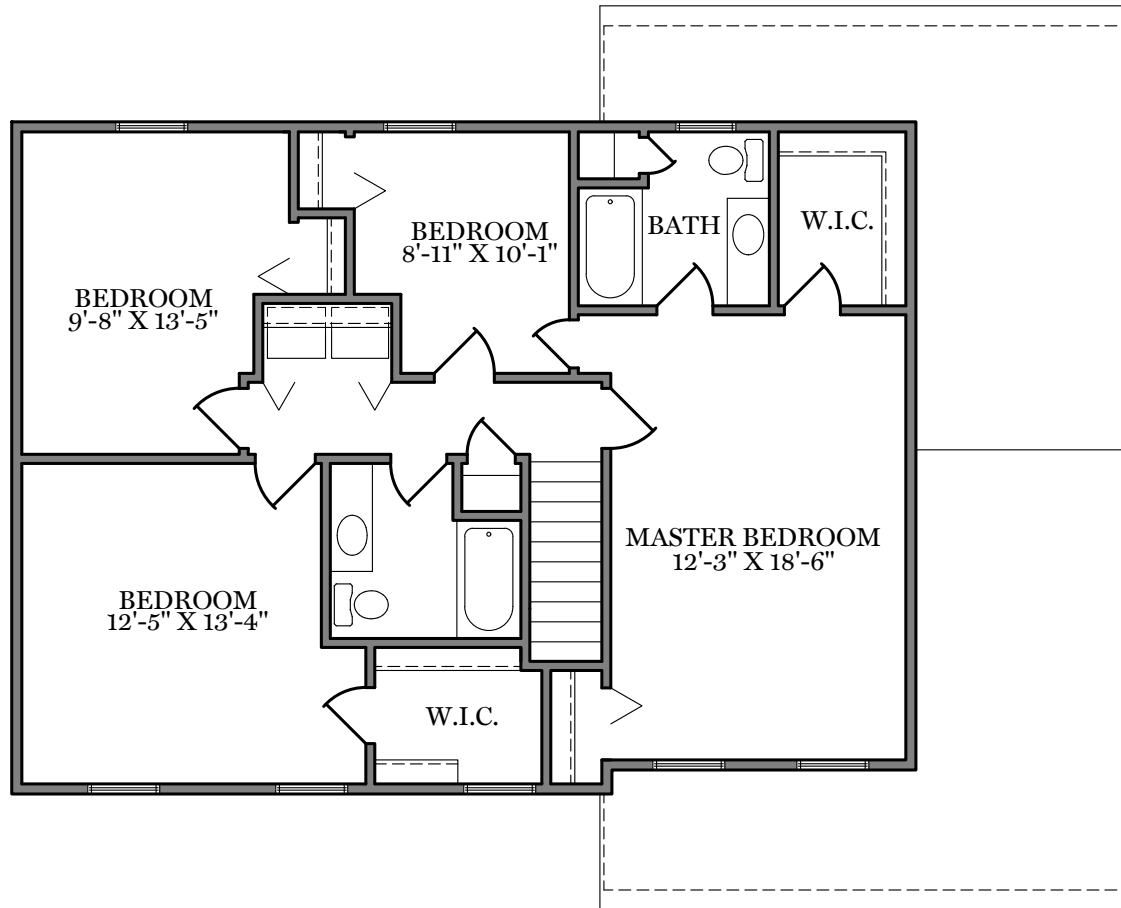
ALL PRINTS ARE FOR ILLUSTRATION
PURPOSES AND REPRESENT
HOMES IN Fox Run Creek
ROOM SIZES ARE APPROXIMATE.
CONTACT SALES AGENT FOR
MORE INFORMATION

Fox Run Creek



First Floor Plan - 987 sf
"ADAMS" (Heritage)

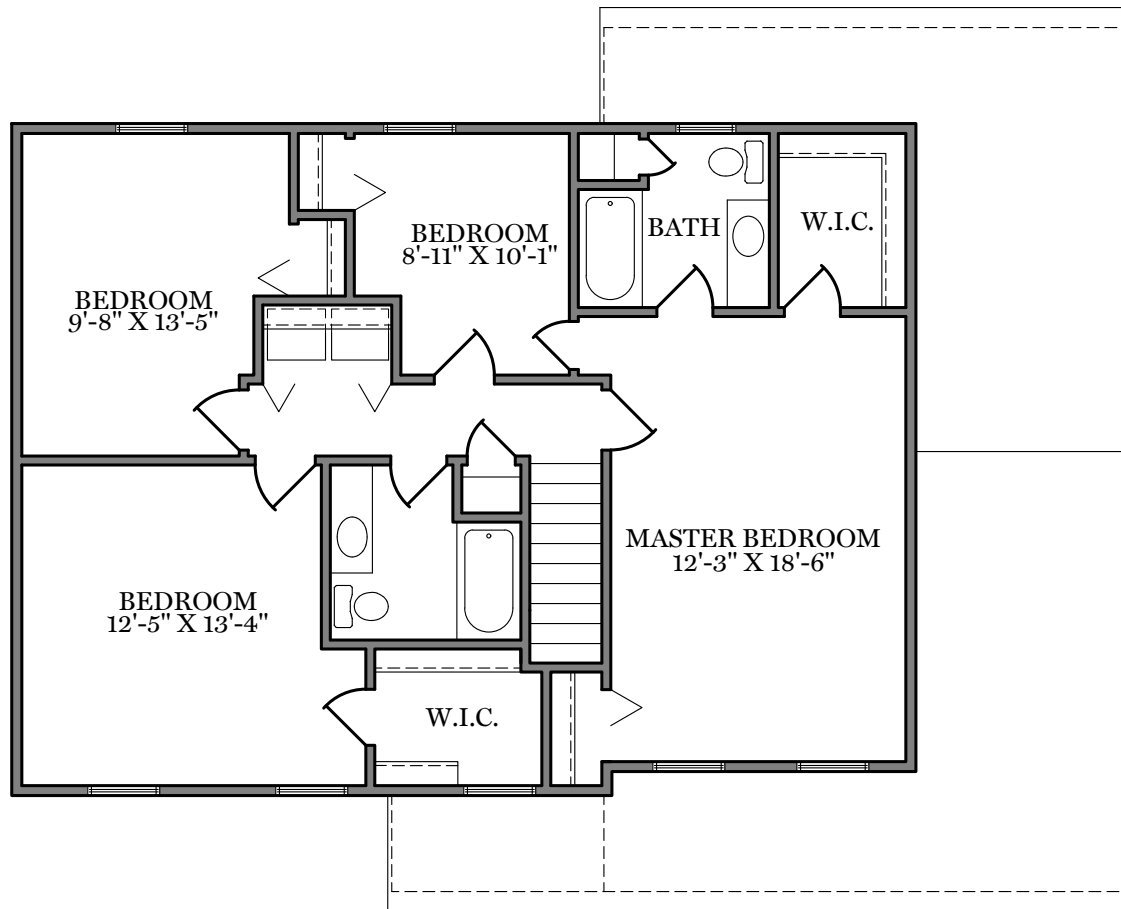
ALL PRINTS ARE FOR ILLUSTRATION
PURPOSES AND REPRESENT
HOMES IN Fox Run Creek
ROOM SIZES ARE APPROXIMATE.
CONTACT SALES AGENT FOR
MORE INFORMATION



Second Floor Plan - 1,042 sf

"ADAMS" (Traditional and Classic)

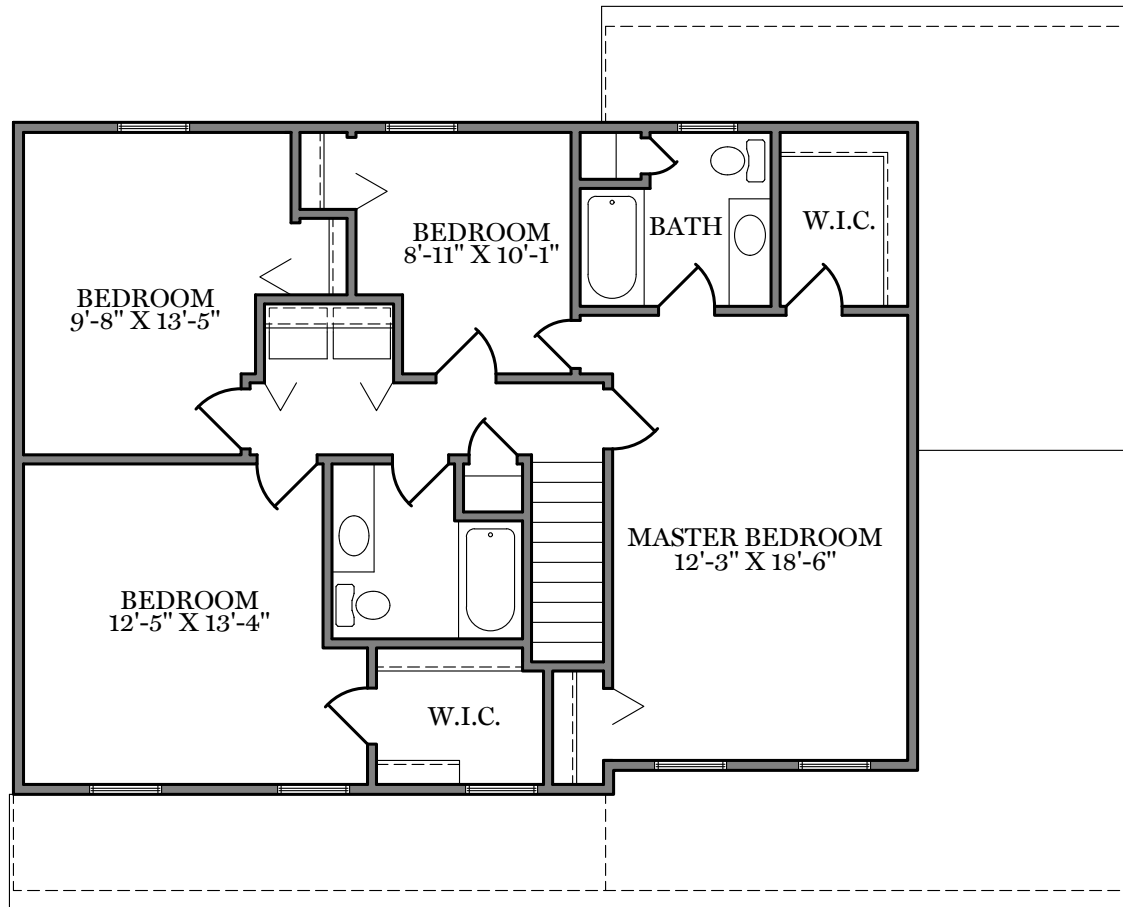
ALL PRINTS ARE FOR ILLUSTRATION
PURPOSES AND REPRESENT
HOMES IN Fox Run Creek
ROOM SIZES ARE APPROXIMATE.
CONTACT SALES AGENT FOR
MORE INFORMATION



Second Floor Plan - 1,042 sf

"ADAMS" (American)

ALL PRINTS ARE FOR ILLUSTRATION
PURPOSES AND REPRESENT
HOMES IN Fox Run Creek
ROOM SIZES ARE APPROXIMATE.
CONTACT SALES AGENT FOR
MORE INFORMATION



Second Floor Plan - 1,042 sf

"ADAMS" (Heritage)

ALL PRINTS ARE FOR ILLUSTRATION
PURPOSES AND REPRESENT
HOMES IN Fox Run Creek
ROOM SIZES ARE APPROXIMATE.
CONTACT SALES AGENT FOR
MORE INFORMATION



Traditional Elevation - 2,029 sf

"ADAMS"

ALL PRINTS ARE FOR ILLUSTRATION
PURPOSES AND REPRESENT
HOMES IN Fox Run Creek
ROOM SIZES ARE APPROXIMATE.
CONTACT SALES AGENT FOR
MORE INFORMATION



Classic Elevation - 2,029 sf

"ADAMS"

ALL PRINTS ARE FOR ILLUSTRATION
PURPOSES AND REPRESENT
HOMES IN Fox Run Creek
ROOM SIZES ARE APPROXIMATE.
CONTACT SALES AGENT FOR
MORE INFORMATION



American Elevation - 2,029 sf

"ADAMS"

ALL PRINTS ARE FOR ILLUSTRATION
PURPOSES AND REPRESENT
HOMES IN Fox Run Creek
ROOM SIZES ARE APPROXIMATE.
CONTACT SALES AGENT FOR
MORE INFORMATION



