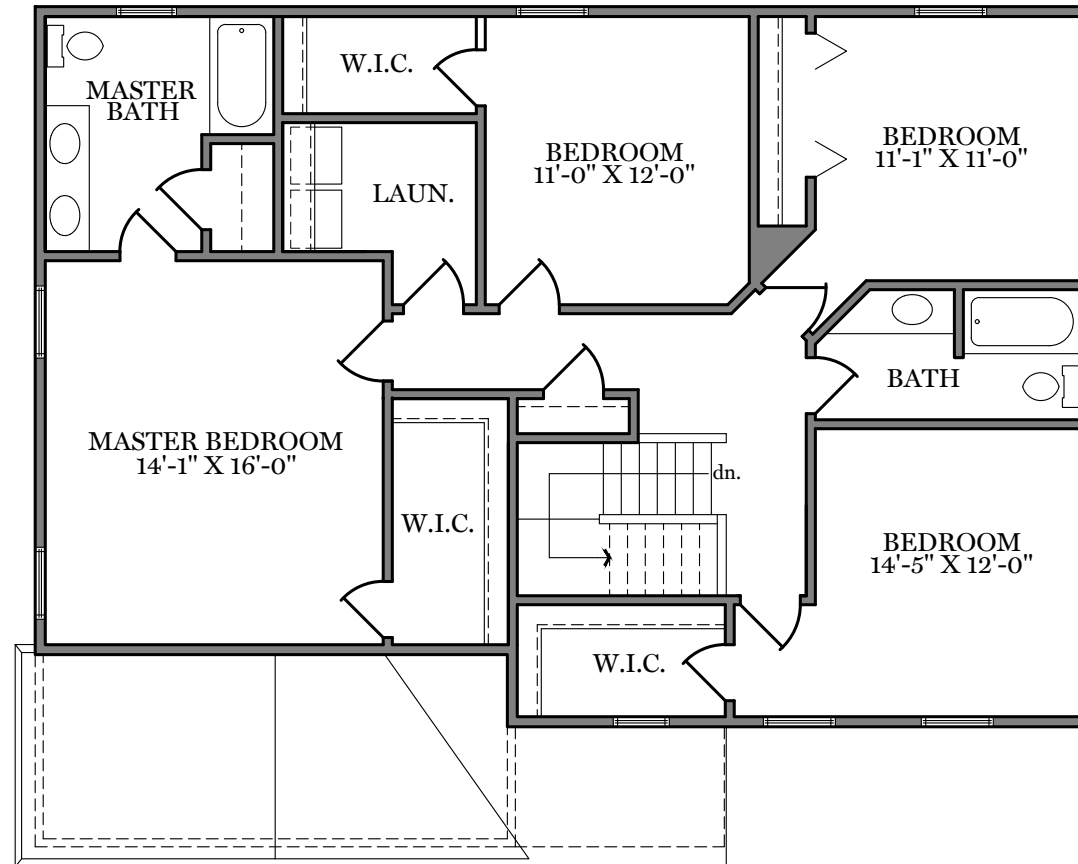


First Floor Plan - 1,012 sf

"ARCHER" (Traditional, Classic, and American)

ALL PRINTS ARE FOR ILLUSTRATION PURPOSES AND REPRESENT HOMES IN Fox Run Creek. ROOM SIZES ARE APPROXIMATE. CONTACT SALES AGENT FOR MORE INFORMATION.

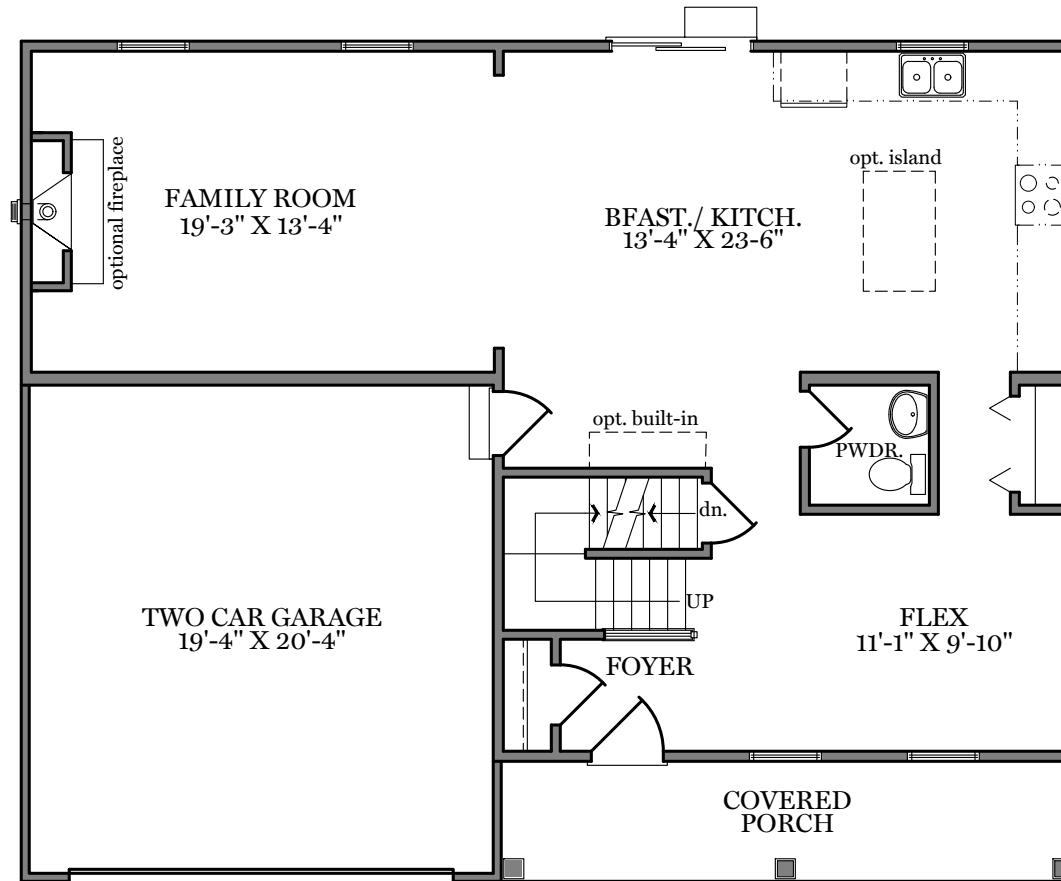


Second Floor Plan 1,261 sf

"ARCHER"(Traditional)

ALL PRINTS ARE FOR ILLUSTRATION PURPOSES AND REPRESENT HOMES IN Fox Run Creek. ROOM SIZES ARE APPROXIMATE. CONTACT SALES AGENT FOR MORE INFORMATION.

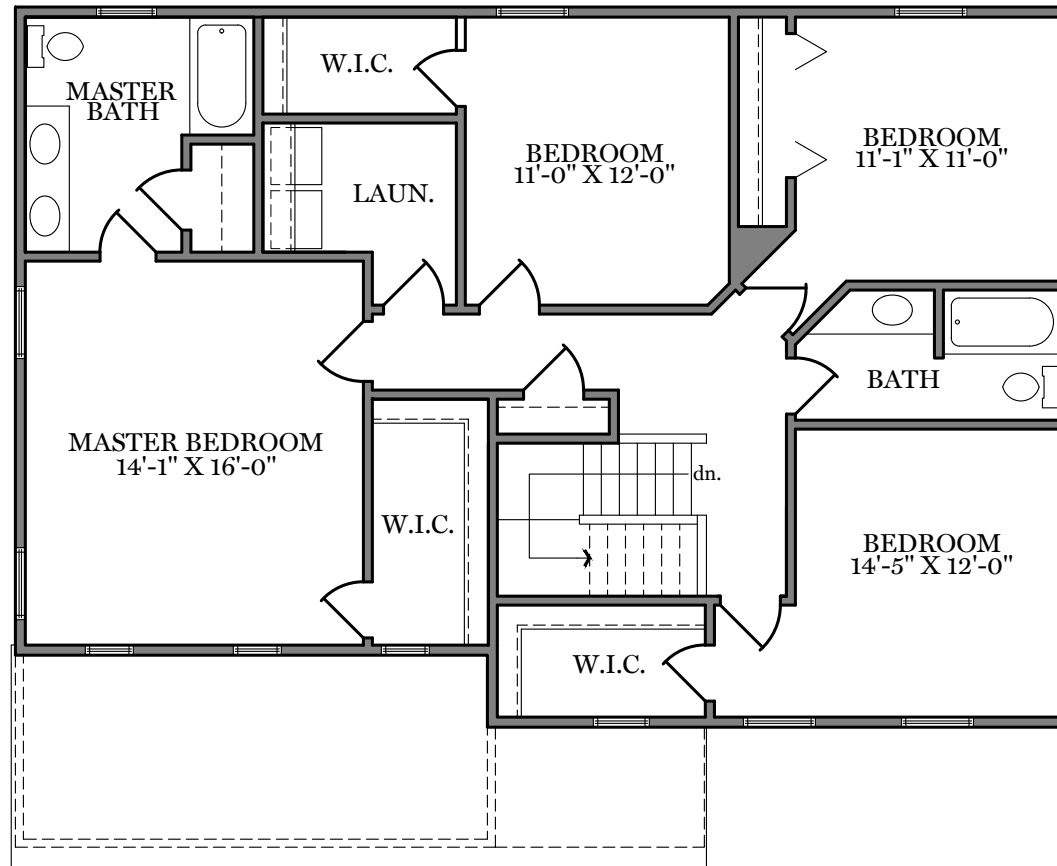
Fox Run Creek



First Floor Plan - 1,012 sf

"ARCHER" (Heritage)

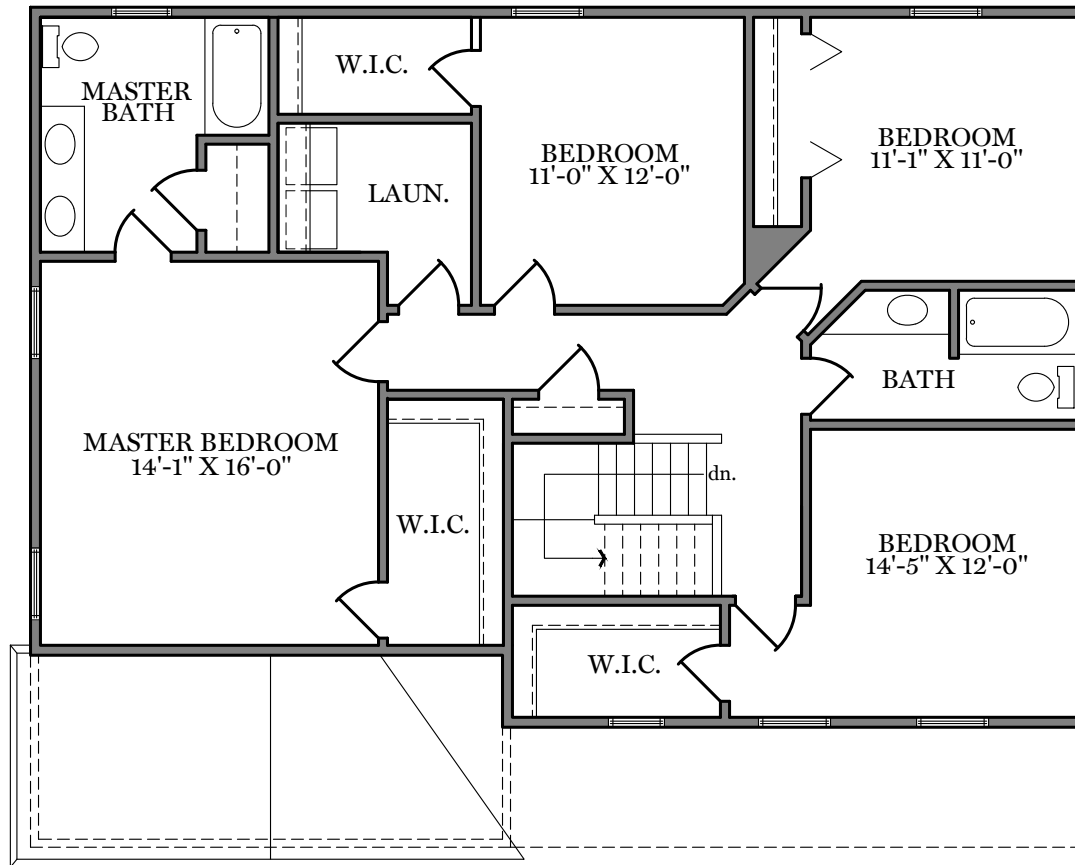
ALL PRINTS ARE FOR ILLUSTRATION
PURPOSES AND REPRESENT
HOMES IN Fox Run Creek
ROOM SIZES ARE APPROXIMATE.
CONTACT SALES AGENT FOR
MORE INFORMATION



Second Floor Plan 1,261 sf

"ARCHER" (Classic and American)

ALL PRINTS ARE FOR ILLUSTRATION PURPOSES AND REPRESENT HOMES IN Fox Run Creek. ROOM SIZES ARE APPROXIMATE. CONTACT SALES AGENT FOR MORE INFORMATION.



Fox Run Creek



Traditional Elevation - 2,273 sf

"ARCHER"

ALL PRINTS ARE FOR ILLUSTRATION
PURPOSES AND REPRESENT
HOMES IN Fox Run Creek
ROOM SIZES ARE APPROXIMATE.
CONTACT SALES AGENT FOR
MORE INFORMATION



Classic Elevation - 2,273 sf

"ARCHER"

ALL PRINTS ARE FOR ILLUSTRATION
PURPOSES AND REPRESENT
HOMES IN Fox Run Creek
ROOM SIZES ARE APPROXIMATE.
CONTACT SALES AGENT FOR
MORE INFORMATION

Fox Run Creek



American Elevation - 2,273 sf

"ARCHER"

ALL PRINTS ARE FOR ILLUSTRATION
PURPOSES AND REPRESENT
HOMES IN Fox Run Creek
ROOM SIZES ARE APPROXIMATE.
CONTACT SALES AGENT FOR
MORE INFORMATION



Heritage Elevation - 2,273 sf

"ARCHER"

ALL PRINTS ARE FOR ILLUSTRATION
PURPOSES AND REPRESENT
HOMES IN Fox Run Creek
ROOM SIZES ARE APPROXIMATE.
CONTACT SALES AGENT FOR
MORE INFORMATION