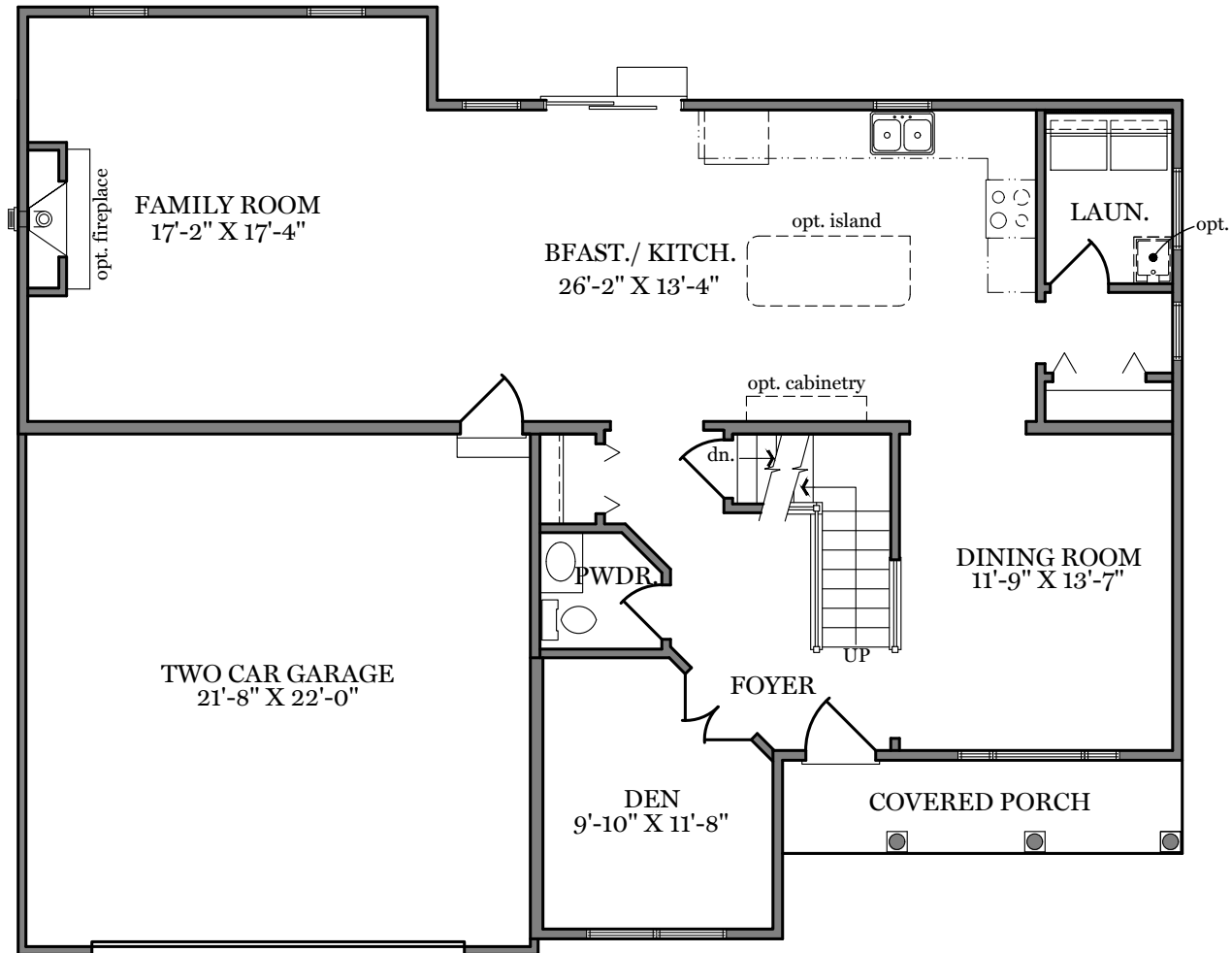


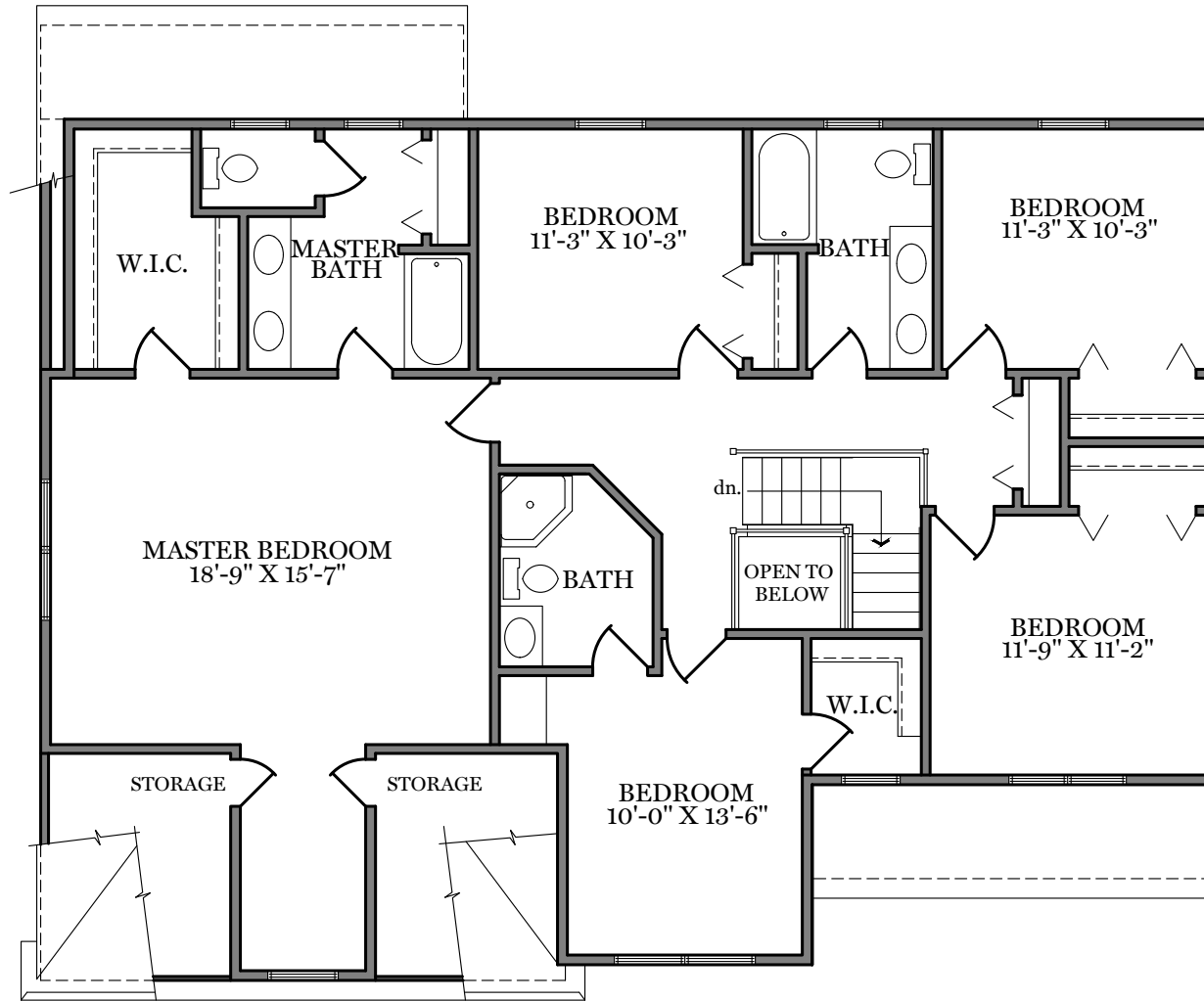
Fox Run Creek



First Floor Plan - 1,264 sf

"CAMBRIDGE" (Traditional, Classic, and Heritage)

ALL PRINTS ARE FOR ILLUSTRATION PURPOSES AND REPRESENT HOMES IN Fox Run Creek. ROOM SIZES ARE APPROXIMATE. CONTACT SALES AGENT FOR MORE INFORMATION.

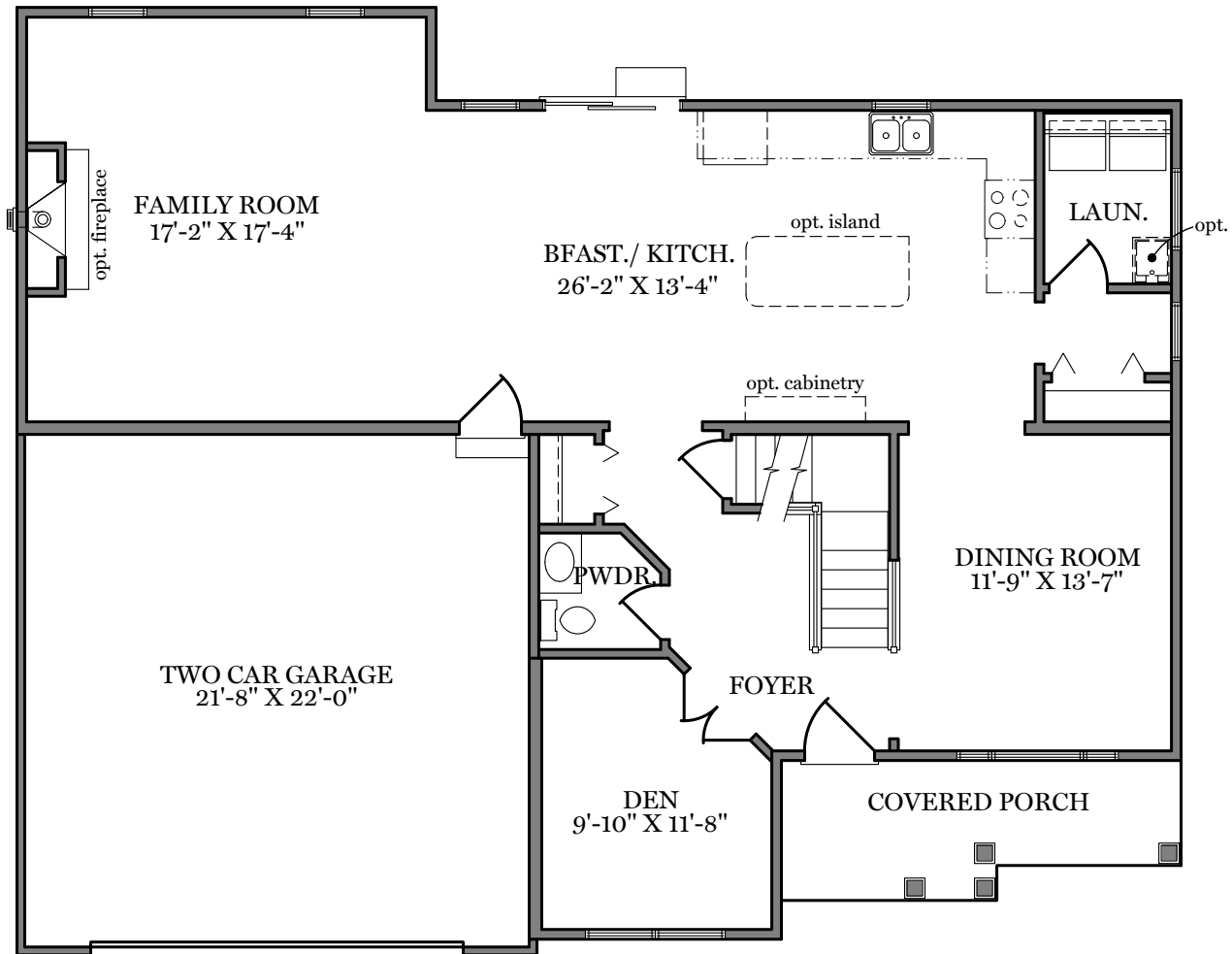


Second Floor Plan 1,544 sf

"CAMBRIDGE" (Traditional and Classic)

ALL PRINTS ARE FOR ILLUSTRATION PURPOSES AND REPRESENT HOMES IN Fox Run Creek. ROOM SIZES ARE APPROXIMATE. CONTACT SALES AGENT FOR MORE INFORMATION.

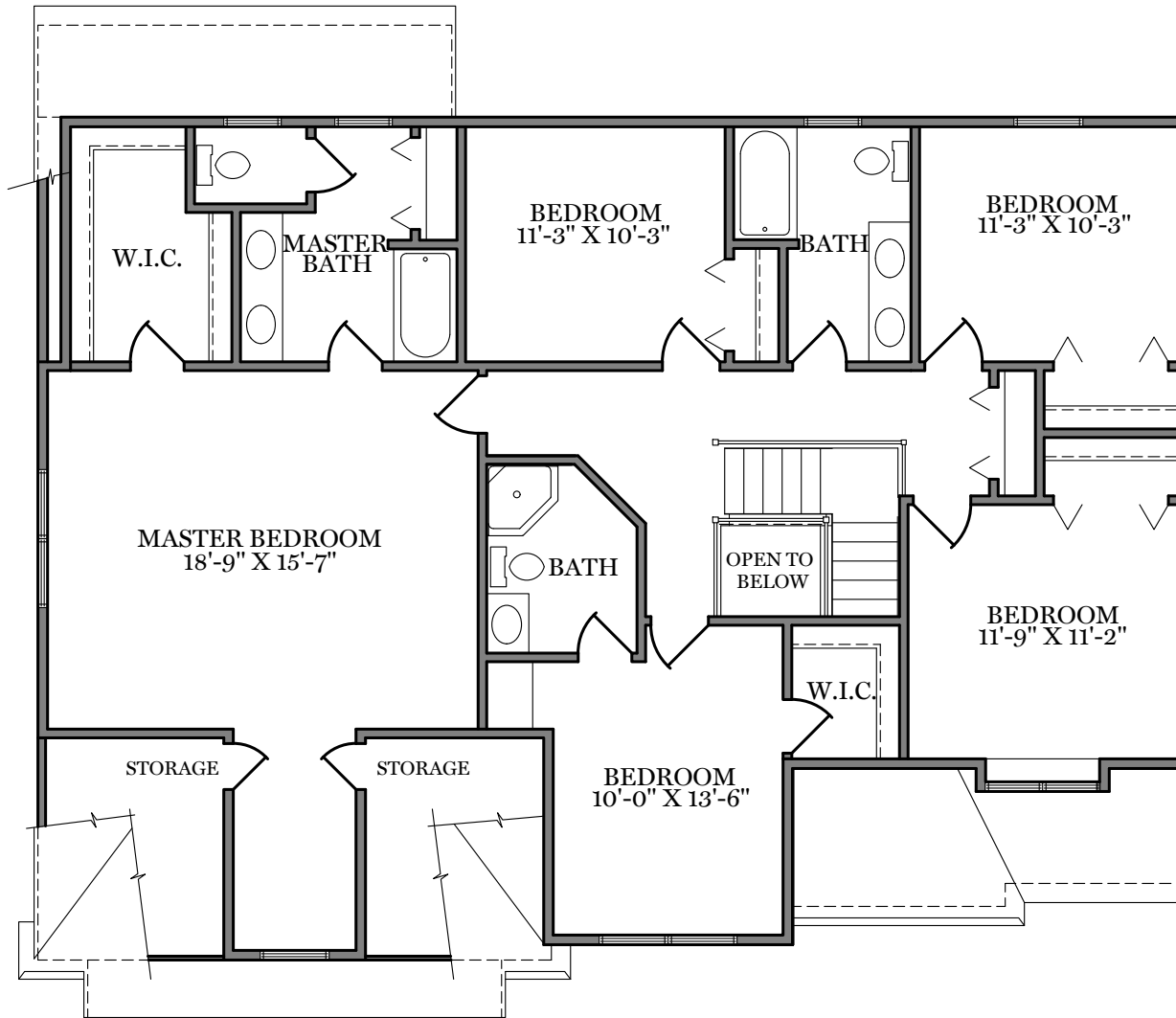
Fox Run Creek



American First Floor Plan - 1,264 sf

"CAMBRIDGE"

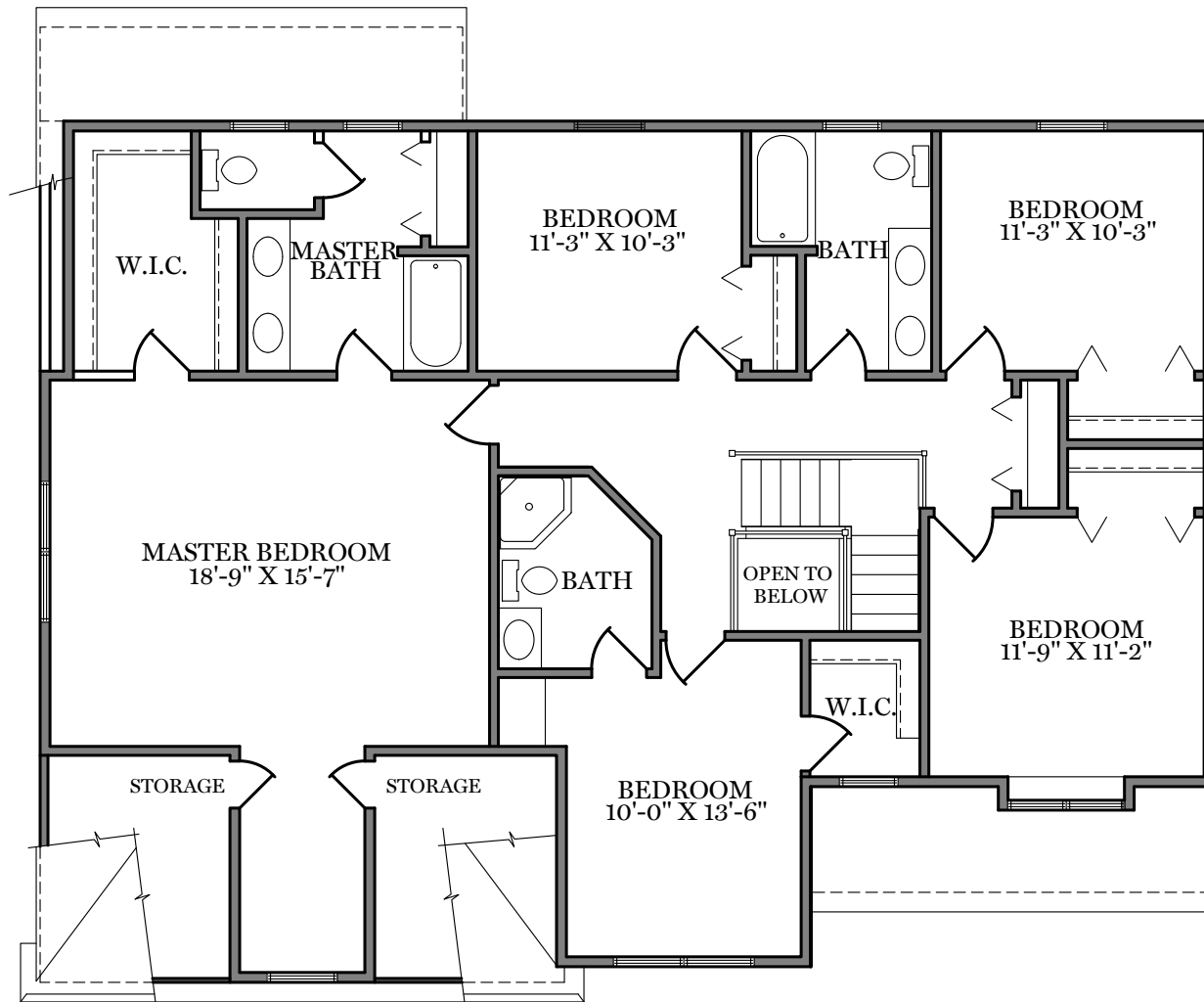
ALL PRINTS ARE FOR ILLUSTRATION PURPOSES AND REPRESENT HOMES IN Fox Run Creek. ROOM SIZES ARE APPROXIMATE. CONTACT SALES AGENT FOR MORE INFORMATION.



American Second Floor Plan 1,544 sf

"CAMBRIDGE"

ALL PRINTS ARE FOR ILLUSTRATION PURPOSES AND REPRESENT HOMES IN Fox Run Creek. ROOM SIZES ARE APPROXIMATE. CONTACT SALES AGENT FOR MORE INFORMATION.



Heritage Second Floor Plan 1,544 sf

"CAMBRIDGE"

ALL PRINTS ARE FOR ILLUSTRATION
PURPOSES AND REPRESENT
HOMES IN Fox Run Creek
ROOM SIZES ARE APPROXIMATE.
CONTACT SALES AGENT FOR
MORE INFORMATION

Fox Run Creek



Traditional Elevation - 2,808 sf

"CAMBRIDGE"

ALL PRINTS ARE FOR ILLUSTRATION
PURPOSES AND REPRESENT
HOMES IN Fox Run Creek
ROOM SIZES ARE APPROXIMATE.
CONTACT SALES AGENT FOR
MORE INFORMATION



Classic Elevation - 2,808 sf

"CAMBRIDGE"

ALL PRINTS ARE FOR ILLUSTRATION
PURPOSES AND REPRESENT
HOMES IN Fox Run Creek
ROOM SIZES ARE APPROXIMATE.
CONTACT SALES AGENT FOR
MORE INFORMATION

Fox Run Creek



American Elevation - 2,808 sf

"CAMBRIDGE"

ALL PRINTS ARE FOR ILLUSTRATION
PURPOSES AND REPRESENT
HOMES IN Fox Run Creek
ROOM SIZES ARE APPROXIMATE.
CONTACT SALES AGENT FOR
MORE INFORMATION



Heritage Elevation - 2,808 sf

"CAMBRIDGE"

ALL PRINTS ARE FOR ILLUSTRATION PURPOSES AND REPRESENT HOMES IN Fox Run Creek. ROOM SIZES ARE APPROXIMATE. CONTACT SALES AGENT FOR MORE INFORMATION