



AMERICAN

# Adams



TRADITIONAL



CLASSIC



HERITAGE

- Spacious floorplan with large family room and kitchen/breakfast area
- Living room/dining room space near front of home
- Owner's entry with easy access to kitchen and family room
- Master suite with private bath and walk-in closet

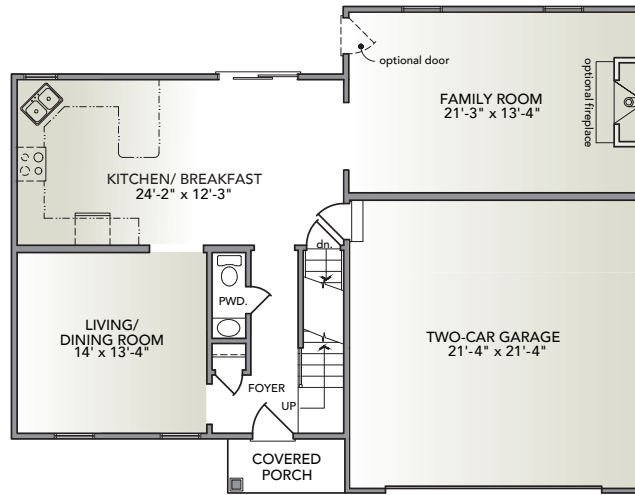
Information presented is for illustrative purposes only. Room dimensions and details may vary based on options and elevation selected. Not all features are shown. Please ask a New Home Sales Specialist for complete information. EGStoltzfus reserves the right to make changes without notice. Copyright ©2020 EGStoltzfus Homes.



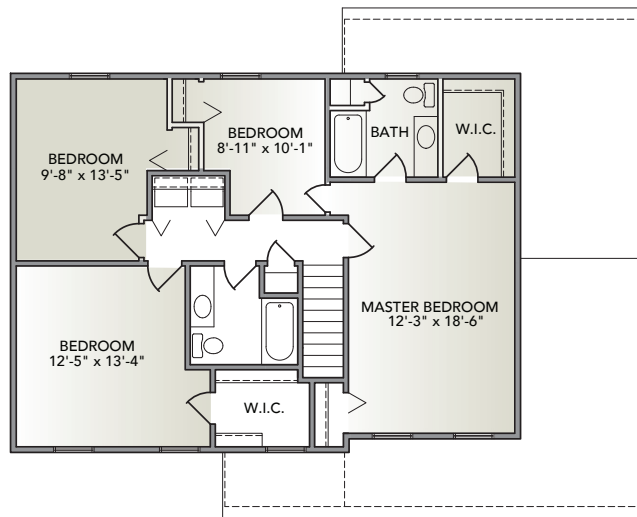
KENDALE OAKS | EGStoltzfus Neighborhood Homes  
[www.egstoltzfus.com](http://www.egstoltzfus.com)

4 BEDS | 2 1/2 BATHS | 2-CAR GARAGE | 2,029 SQ. FEET | TWO STORY

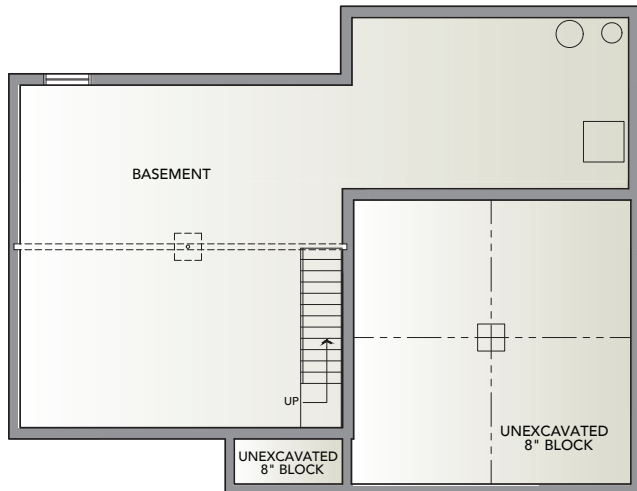
FIRST FLOOR



SECOND FLOOR



BASEMENT



Information presented is for illustrative purposes only. Room dimensions and details may vary based on options and elevation selected. Not all features are shown. Please ask a New Home Sales Specialist for complete information. EGStoltzfus reserves the right to make changes without notice. Copyright ©2020 EGStoltzfus Homes.

