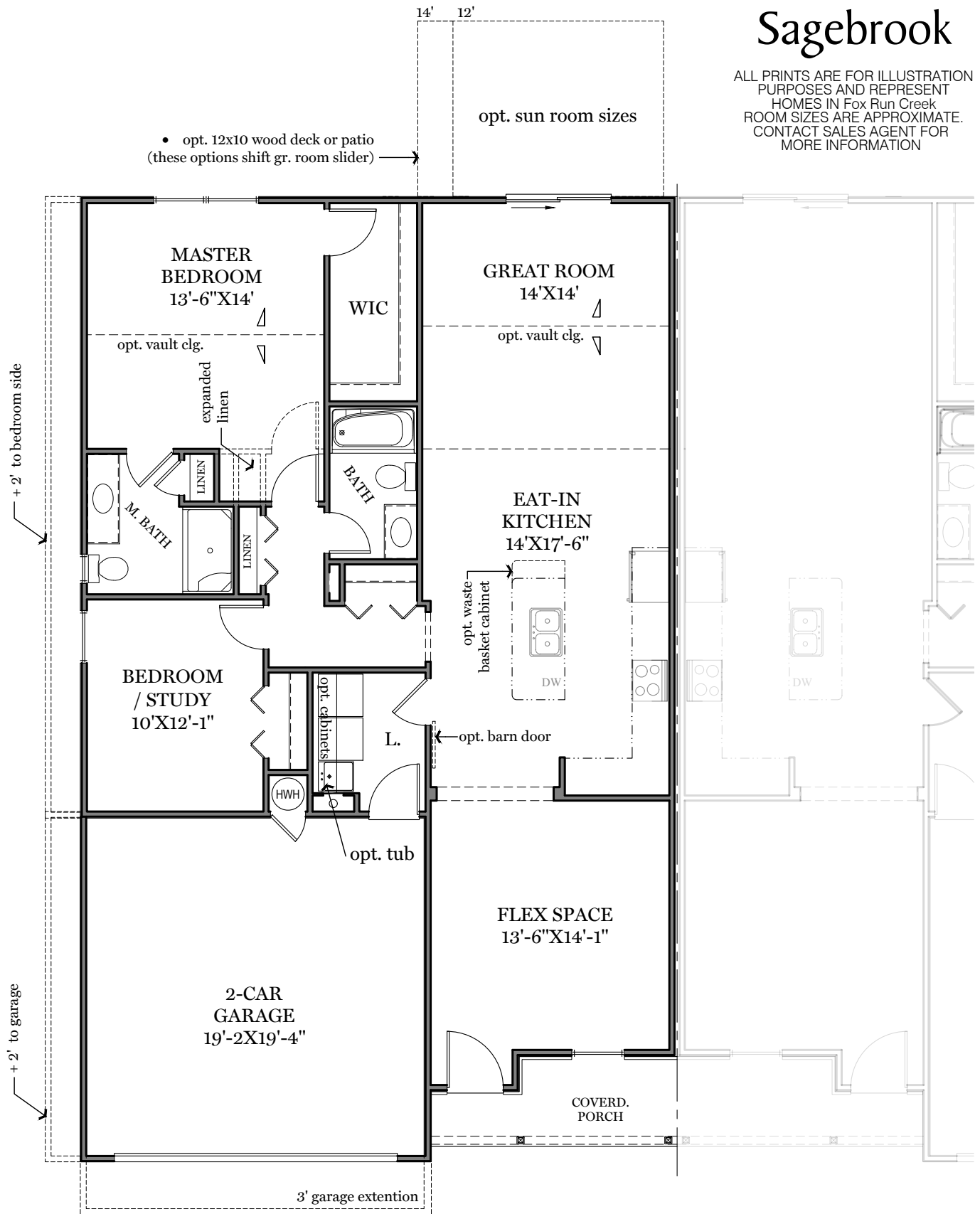


Sagebrook

ALL PRINTS ARE FOR ILLUSTRATION PURPOSES AND REPRESENT HOMES IN Fox Run Creek. ROOM SIZES ARE APPROXIMATE. CONTACT SALES AGENT FOR MORE INFORMATION



First Floor Plan - 1,407 sf

"FERRIS" (slab foundation shown)

Sagebrook

ALL PRINTS ARE FOR ILLUSTRATION
PURPOSES AND REPRESENT
HOMES IN Fox Run Creek
ROOM SIZES ARE APPROXIMATE.
CONTACT SALES AGENT FOR
MORE INFORMATION



— Front Elevation - 1,407 sf —

"FERRIS" (slab foundation shown)



EGStoltzfus
HOMES