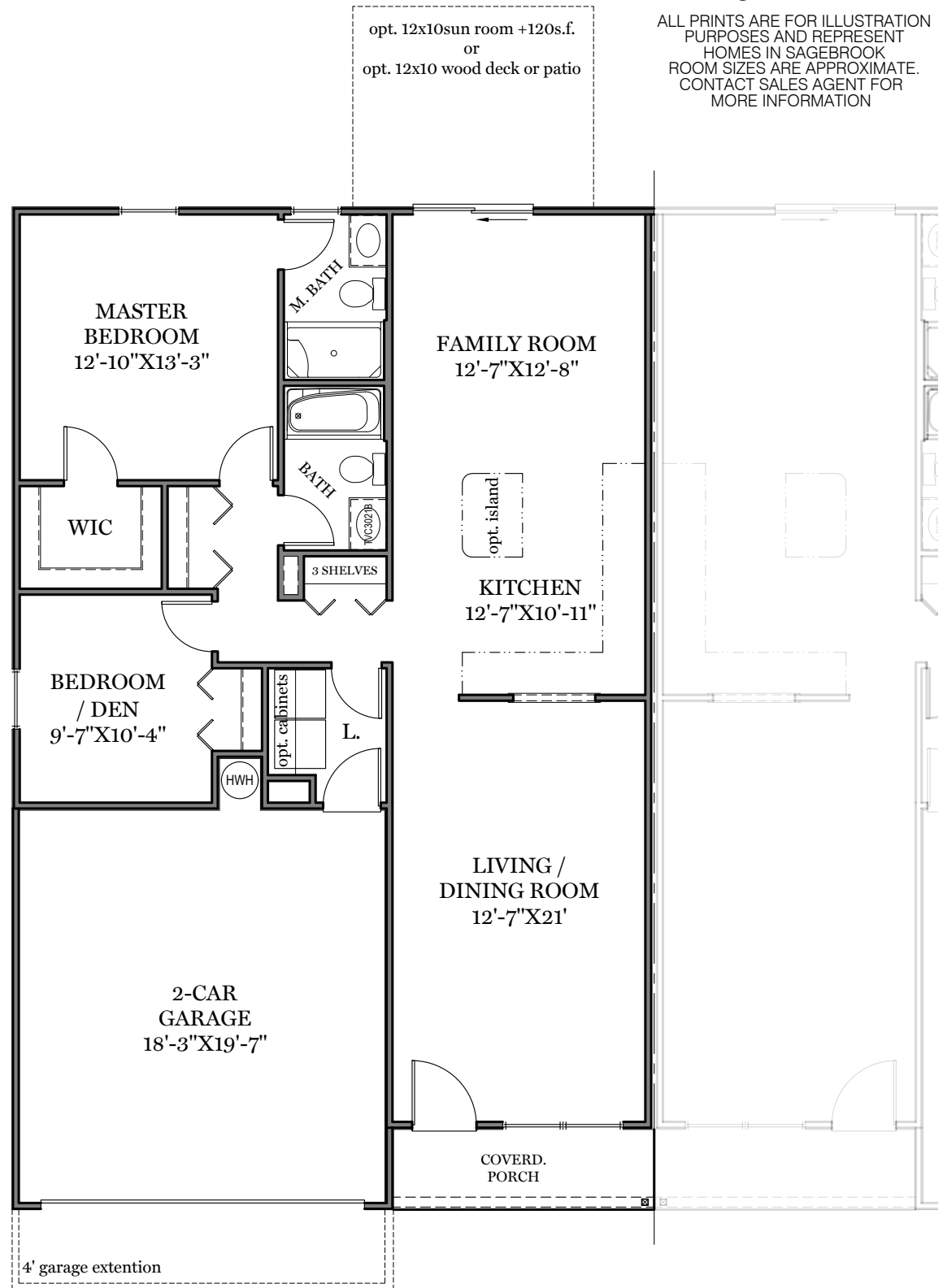


Sagebrook

ALL PRINTS ARE FOR ILLUSTRATION PURPOSES AND REPRESENT HOMES IN SAGEBROOK. ROOM SIZES ARE APPROXIMATE. CONTACT SALES AGENT FOR MORE INFORMATION



First Floor Plan - 1,174sf

"FRANKLIN" (slab foundation shown)



EGStoltzfus
HOMES

Sagebrook

ALL PRINTS ARE FOR ILLUSTRATION
PURPOSES AND REPRESENT
HOMES IN SAGEBROOK
ROOM SIZES ARE APPROXIMATE.
CONTACT SALES AGENT FOR
MORE INFORMATION



— Front Elevation - 1,174 sf —

"FRANKLIN" (slab foundation shown)



EGStoltzfus
HOMES