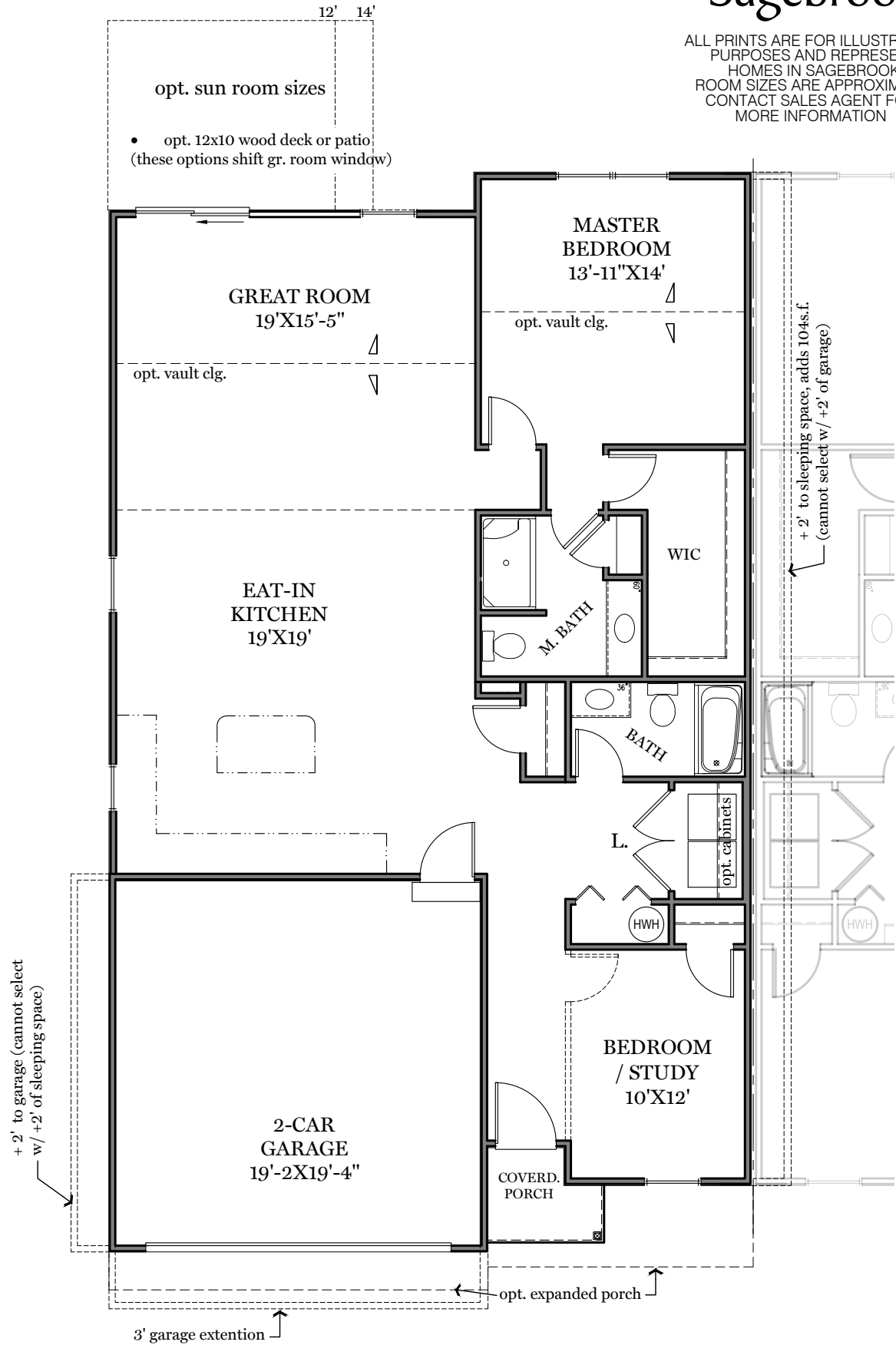


# Sagebrook

ALL PRINTS ARE FOR ILLUSTRATION PURPOSES AND REPRESENT HOMES IN SAGEBROOK. ROOM SIZES ARE APPROXIMATE. CONTACT SALES AGENT FOR MORE INFORMATION



## First Floor Plan - 1,457sf

"ROSEVALE" (slab foundation shown)



**EGStoltzfus**  
HOMES

# Sagebrook

ALL PRINTS ARE FOR ILLUSTRATION  
PURPOSES AND REPRESENT  
HOMES IN SAGEBROOK  
ROOM SIZES ARE APPROXIMATE.  
CONTACT SALES AGENT FOR  
MORE INFORMATION



— Front Elevation - 1,457 sf —

"ROSEVALE" (slab foundation shown)



EGStoltzfus  
HOMES