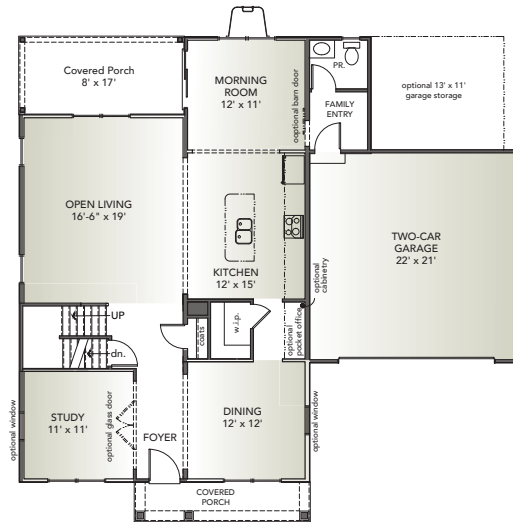


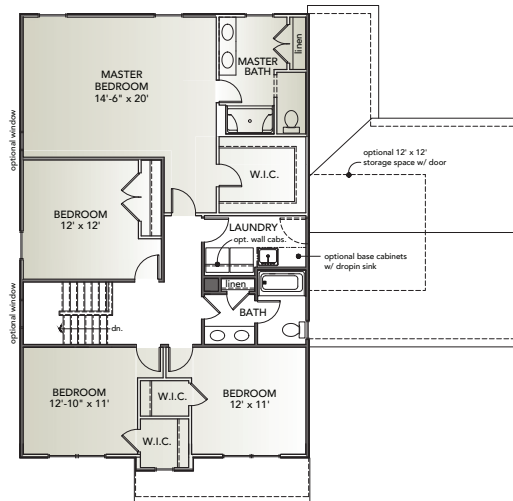
Glen Mary



FIRST FLOOR



SECOND FLOOR



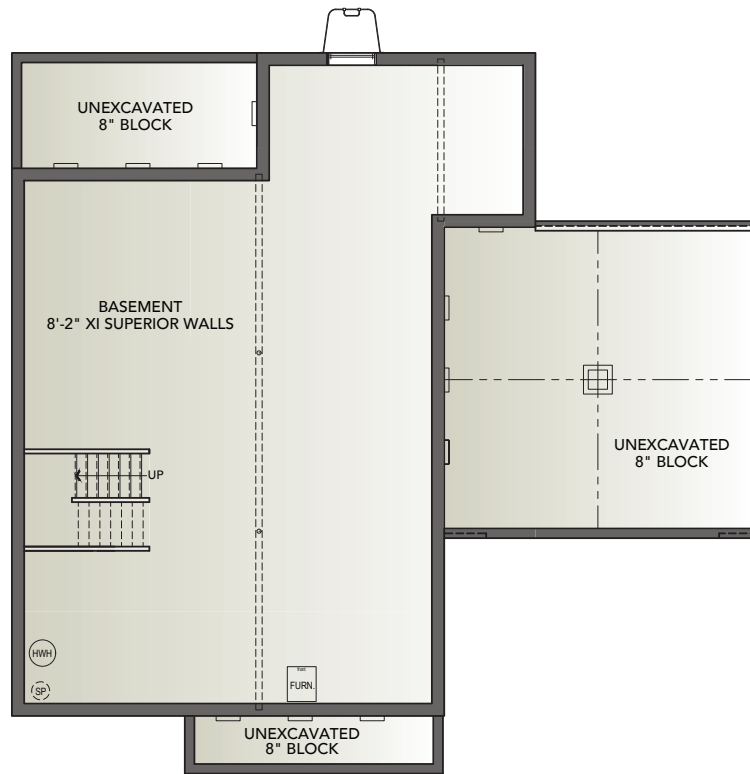
4 BEDS | 2 1/2 BATHS | 2-CAR GARAGE | 2,700 SQ FEET | TWO STORY

Information presented is for illustrative purposes only. Room dimensions and details may vary based on options and elevation selected. Not all features are shown. Please ask a New Home Sales Specialist for complete information. EGStoltzfus reserves the right to make changes without notice. Copyright ©2020 EGStoltzfus Homes.



LANDIS FARM | EGStoltzfus Neighborhood Homes
www.egstoltzfus.com

BASEMENT



- Open floorplan with formal dining room and eat-in kitchen
- Owner's entry with easy access to kitchen and powder room
- Walk-in pantry off kitchen
- Two-story foyer with plant shelf
- Switch back staircase facing family room
- Spacious master suite with large walk-in closet
- Second floor laundry
- Two walk-in closets in spare bedrooms

Information presented is for illustrative purposes only. Room dimensions and details may vary based on options and elevation selected. Not all features are shown. Please ask a New Home Sales Specialist for complete information. EGStoltzfus reserves the right to make changes without notice. Copyright ©2020 EGStoltzfus Homes.

