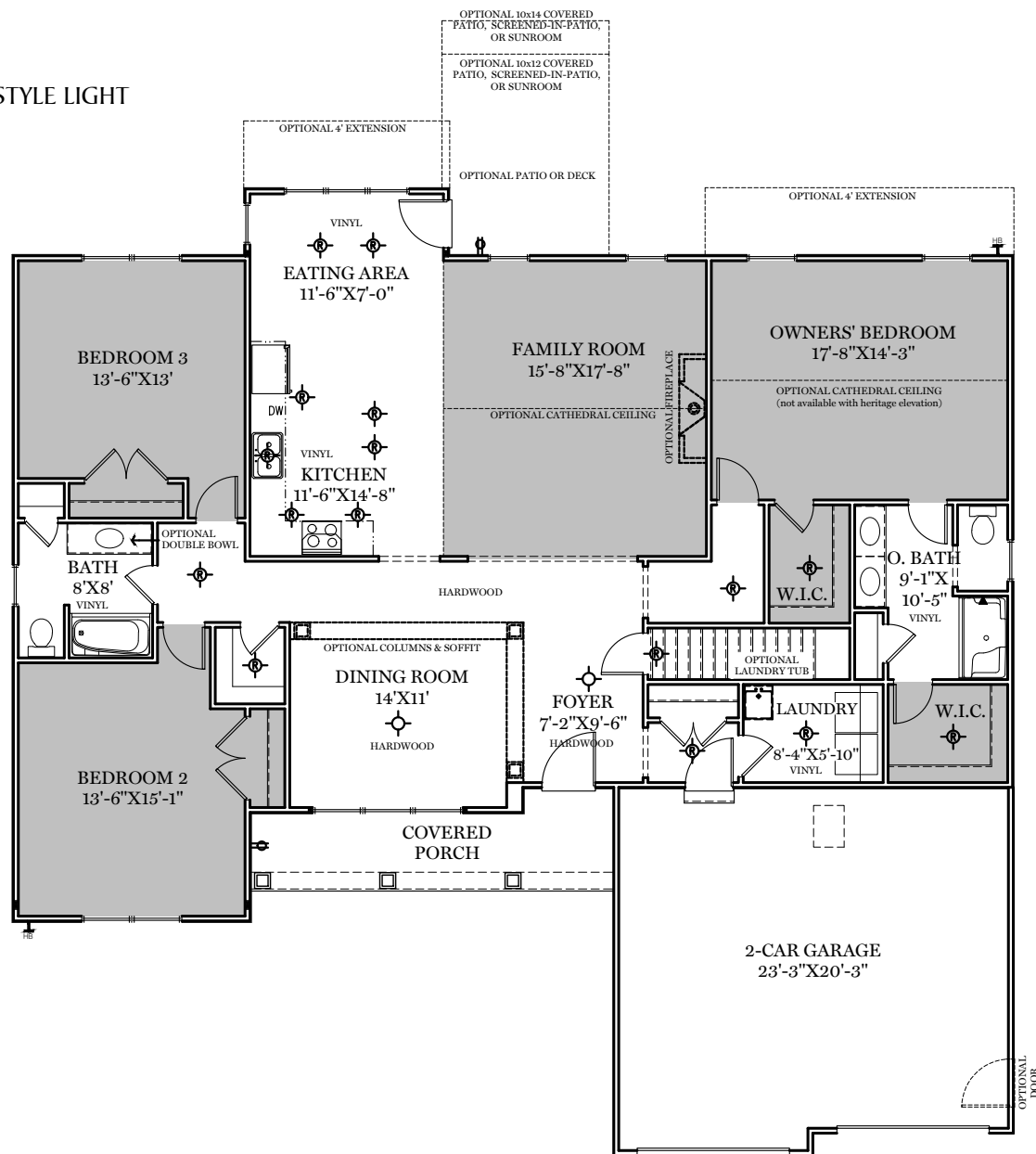


- = CARPETED AREA
- ⊕ = EXTERIOR RECEPTACLE
- HB ⊕ = EXTERIOR HOSE BIBB
- ⊗ = FLUSH MOUNT RECESSED-STYLE LIGHT
- ⊙ = CEILING LIGHT



TRADITIONAL**, CLASSIC, AMERICAN, & HERITAGE FLOOR PLAN SHOWN

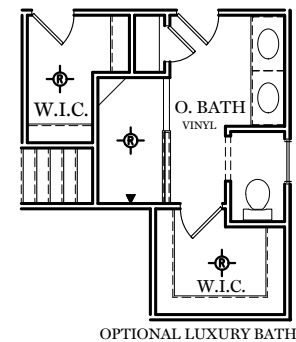
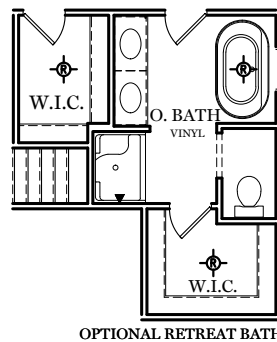
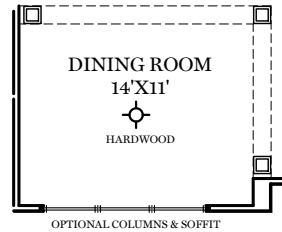
1st Floor Plan - 2,109 sf

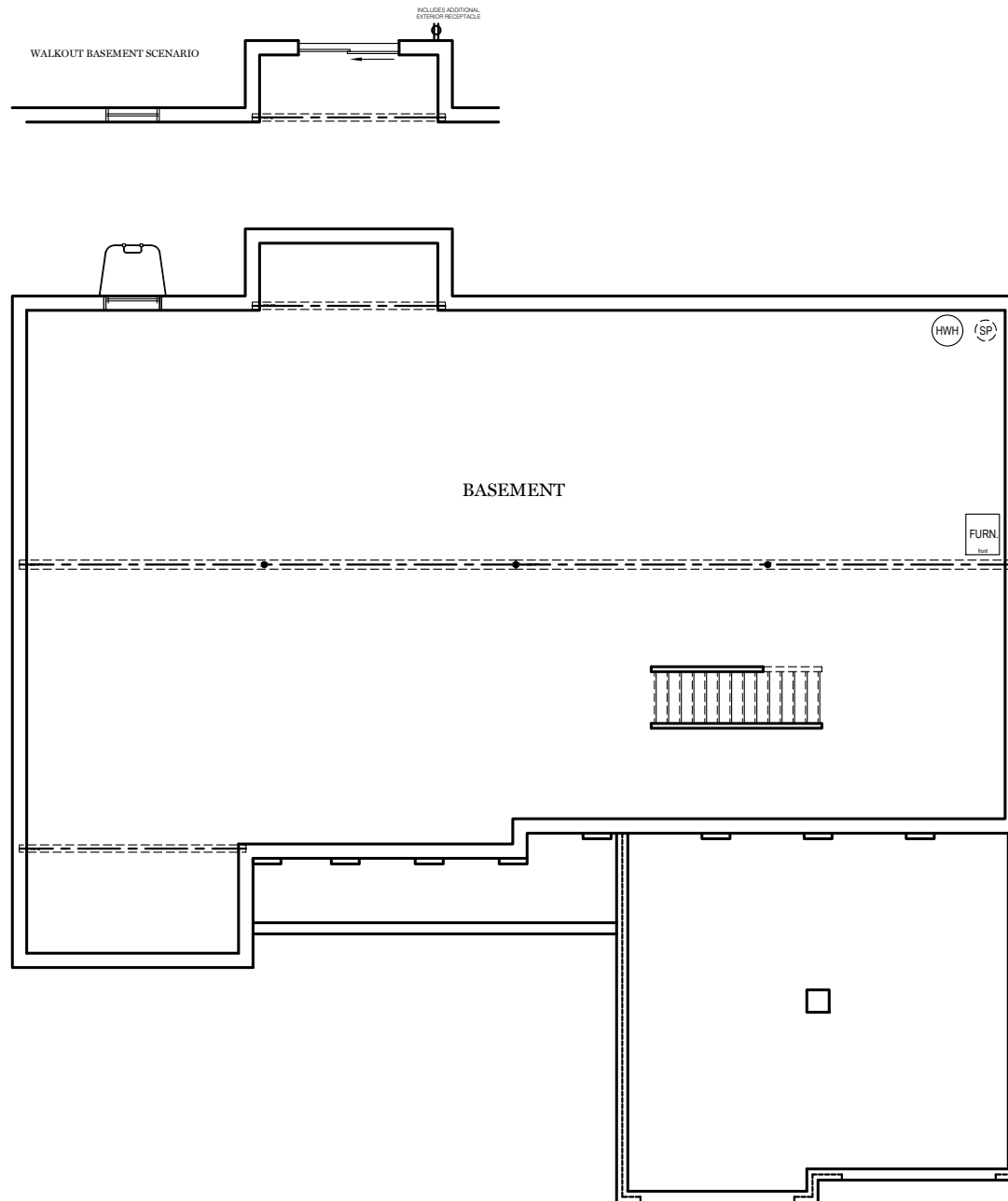
BROOKFIELD

** TRADITIONAL FLOOR PLAN ONLY AVAILABLE IN SELECT COMMUNITIES

ALL IMAGES ARE FOR ARTISTIC PURPOSES ONLY AND MAY CONTAIN ADDITIONAL FEATURES OR DESIGN OPTIONS NOT AVAILABLE ON ALL HOME PLANS AND IN ALL NEIGHBORHOODS. ROOM SIZE DIMENSIONS AND SQUARE FOOTAGES ARE APPROXIMATE. CONTACT SALES AGENT FOR MORE INFORMATION. TERMS AND CONDITIONS APPLY. [HTTPS://EGStoltzfusHomes.com/terms-and-conditions/](https://EGStoltzfusHomes.com/terms-and-conditions/)

PDF LAST UPDATED 4/25/2023





TRADITIONAL** FLOOR PLAN SHOWN

Foundation

BROOKFIELD

** TRADITIONAL FLOOR PLAN ONLY AVAILABLE IN SELECT COMMUNITIES

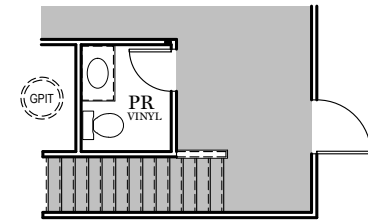
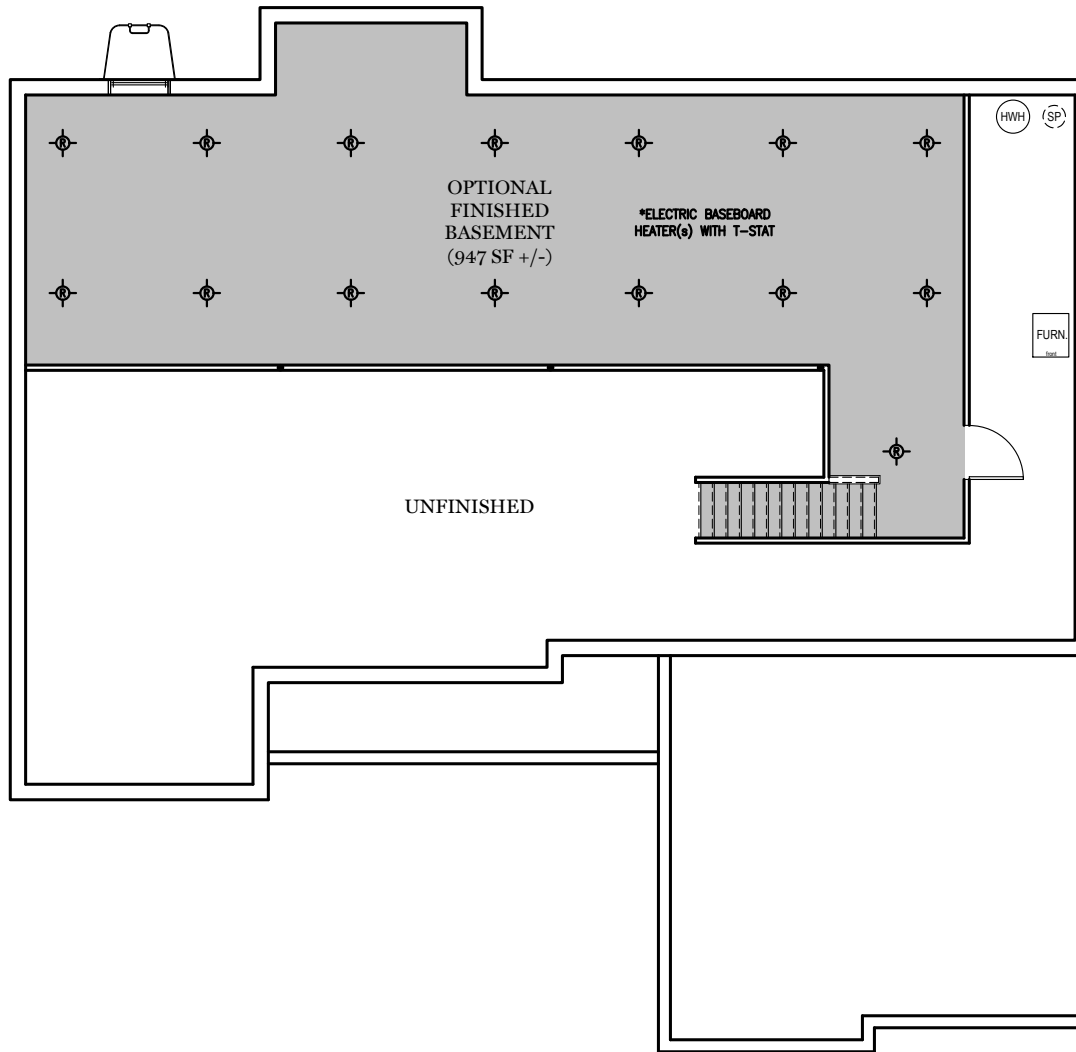
E.G.S. RESERVES THE RIGHT TO RELOCATE MECHANICALS AS REQ. BY SITE CONDITIONS

ALL IMAGES ARE FOR ARTISTIC PURPOSES ONLY AND MAY CONTAIN ADDITIONAL FEATURES OR DESIGN OPTIONS NOT AVAILABLE ON ALL HOME PLANS AND IN ALL NEIGHBORHOODS. ROOM SIZE DIMENSIONS AND SQUARE FOOTAGES ARE APPROXIMATE. CONTACT SALES AGENT FOR MORE INFORMATION. TERMS AND CONDITIONS APPLY. [HTTPS://EGSTOLTZFUSHOMES.COM/TERMS-AND-CONDITIONS/](https://EGSTOLTZFUSHOMES.COM/TERMS-AND-CONDITIONS/)

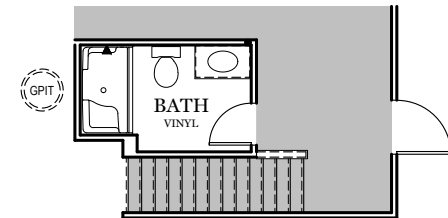
PDF LAST UPDATED 4/25/2023

■ = CARPETED AREA

⊗ = FLUSH MOUNT RECESSED-STYLE LIGHT



OPTIONAL FINISHED
POWDER ROOM (+ 32 SF)



OPTIONAL FINISHED
BATHROOM (+ 56 SF)



TRADITIONAL ELEVATION**



CLASSIC ELEVATION

Elevations

BROOKFIELD



AMERICAN ELEVATION



HERITAGE ELEVATION

Elevations

BROOKFIELD