





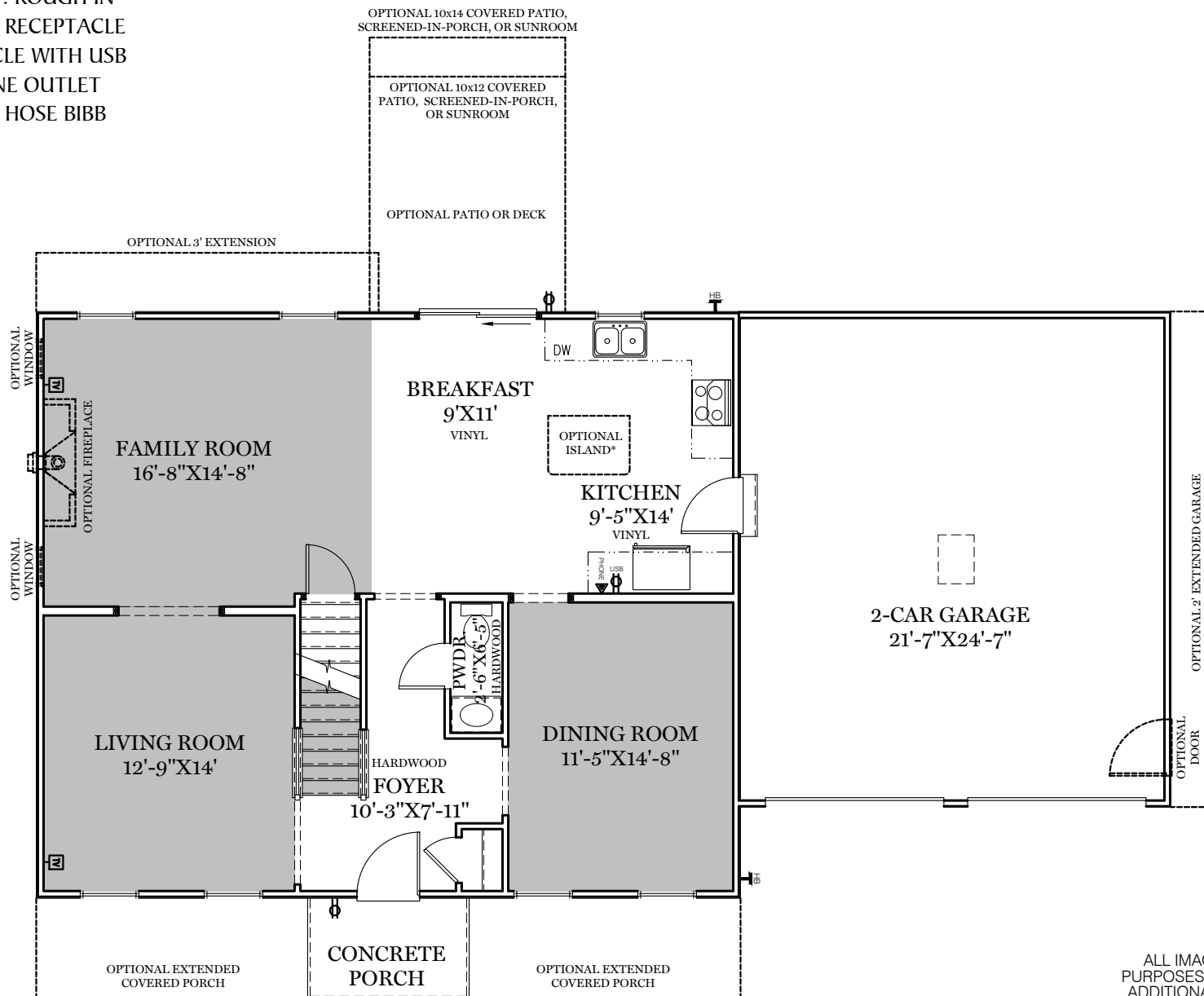
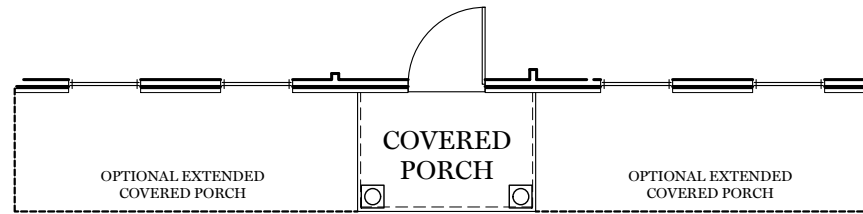
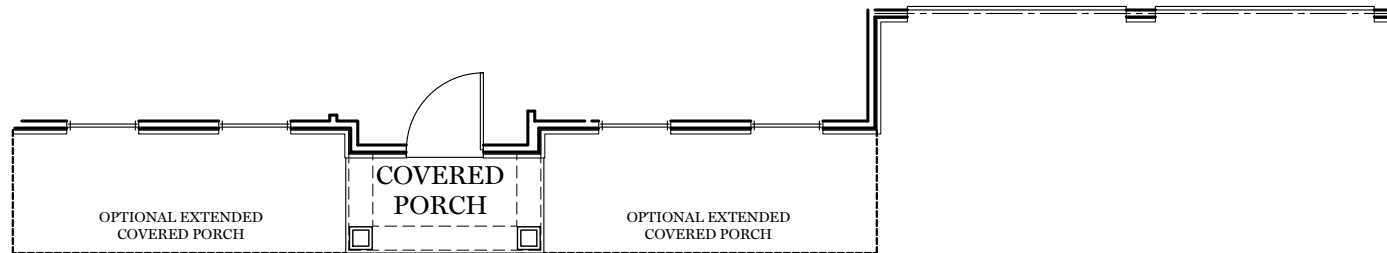


-  = CARPETED AREA
-  = CABLE T.V. ROUGH IN
-  = EXTERIOR RECEPTACLE
-  = RECEPTACLE WITH USB
-  = TELEPHONE OUTLET
-  = EXTERIOR HOSE BIBB

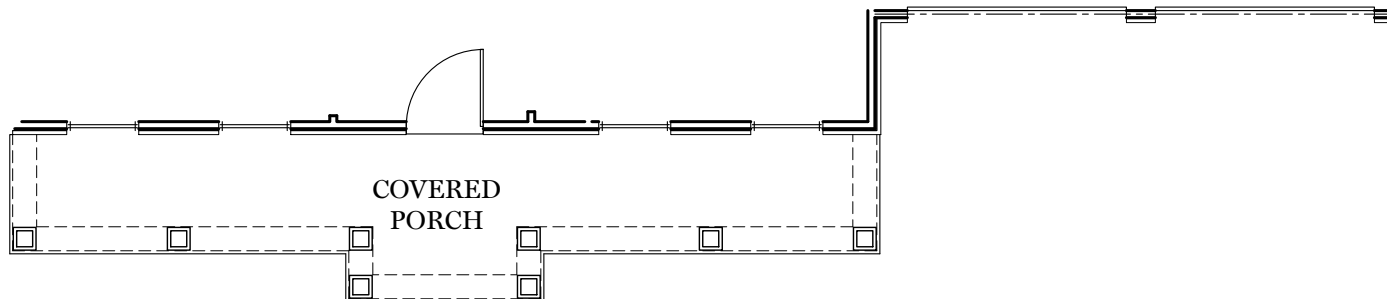




CLASSIC FLOOR PLAN



AMERICAN FLOOR PLAN

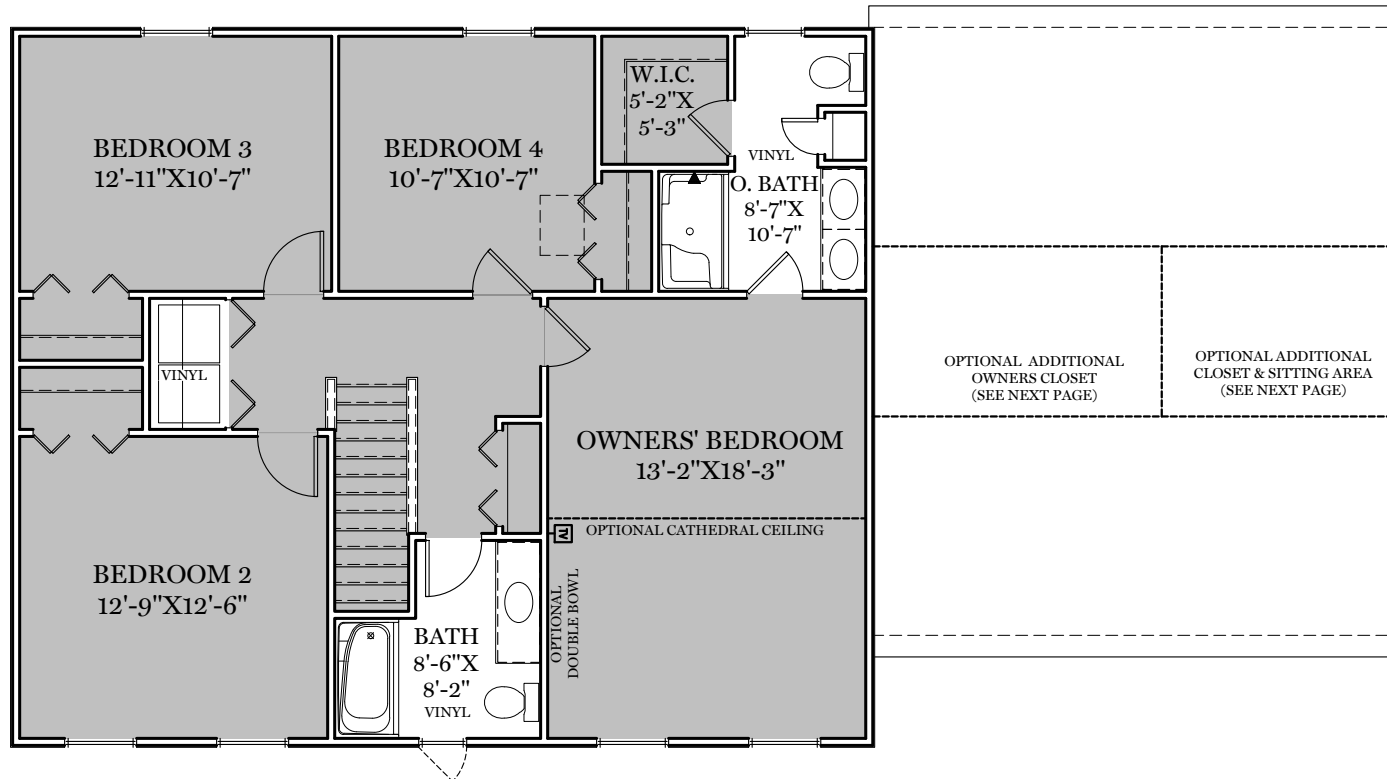


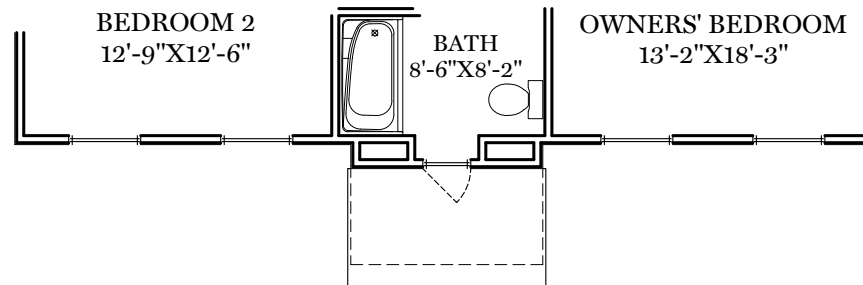
HERITAGE FLOOR PLAN

## 1st Floor Plan

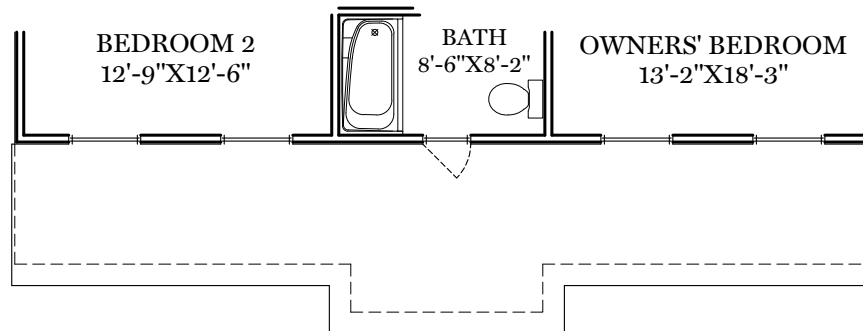
BRIARWOOD

- = CARPETED AREA  
 □ = CABLE T.V. ROUGH IN





AMERICAN FLOOR PLAN

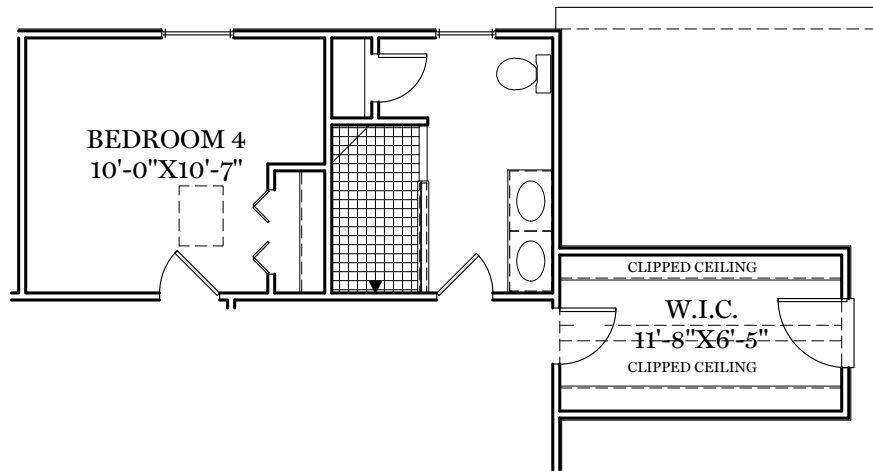


HERITAGE FLOOR PLAN

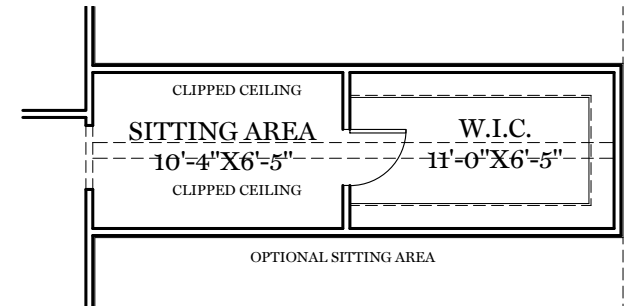
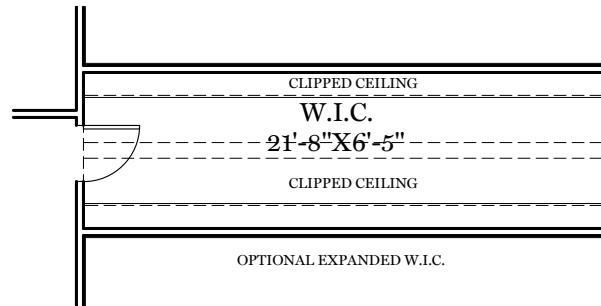
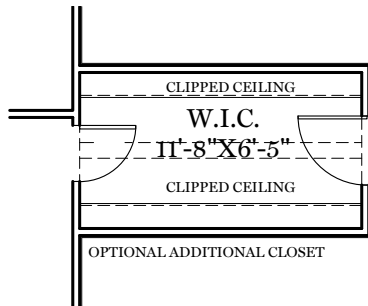
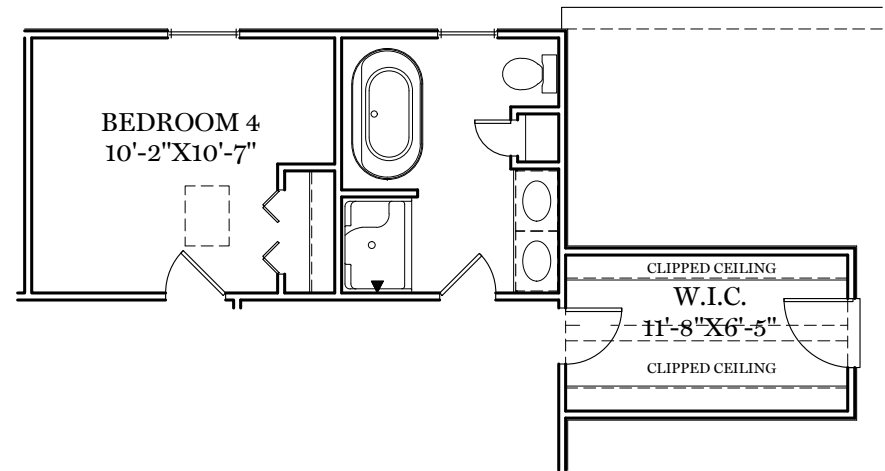
## 2nd Floor Plan

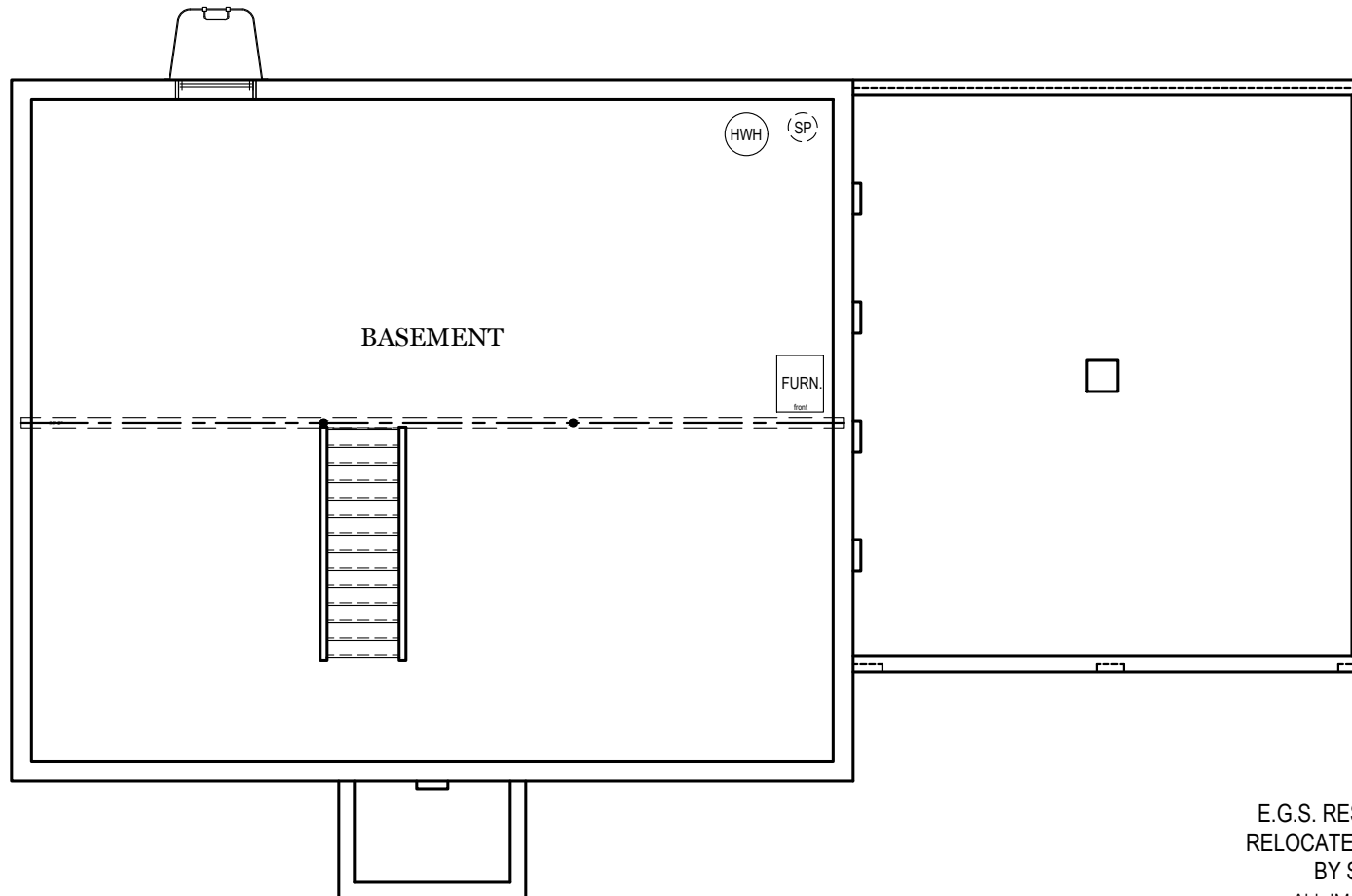
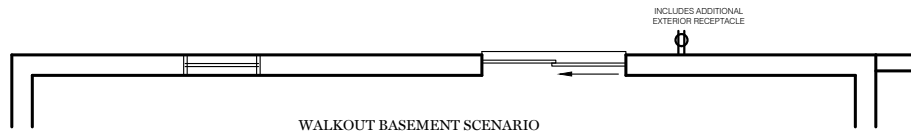
BRIARWOOD

OPTIONAL LUXURY BATH  
(MOVES OWNERS CLOSET AS SHOWN)



OPTIONAL RETREAT BATH  
(MOVES W.I.C. AS SHOWN)





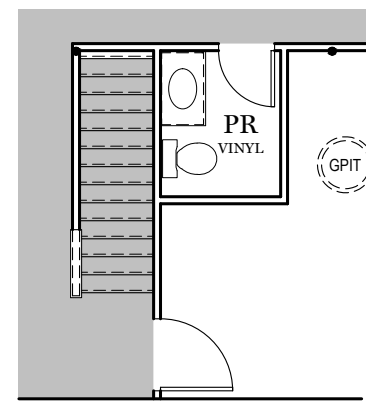
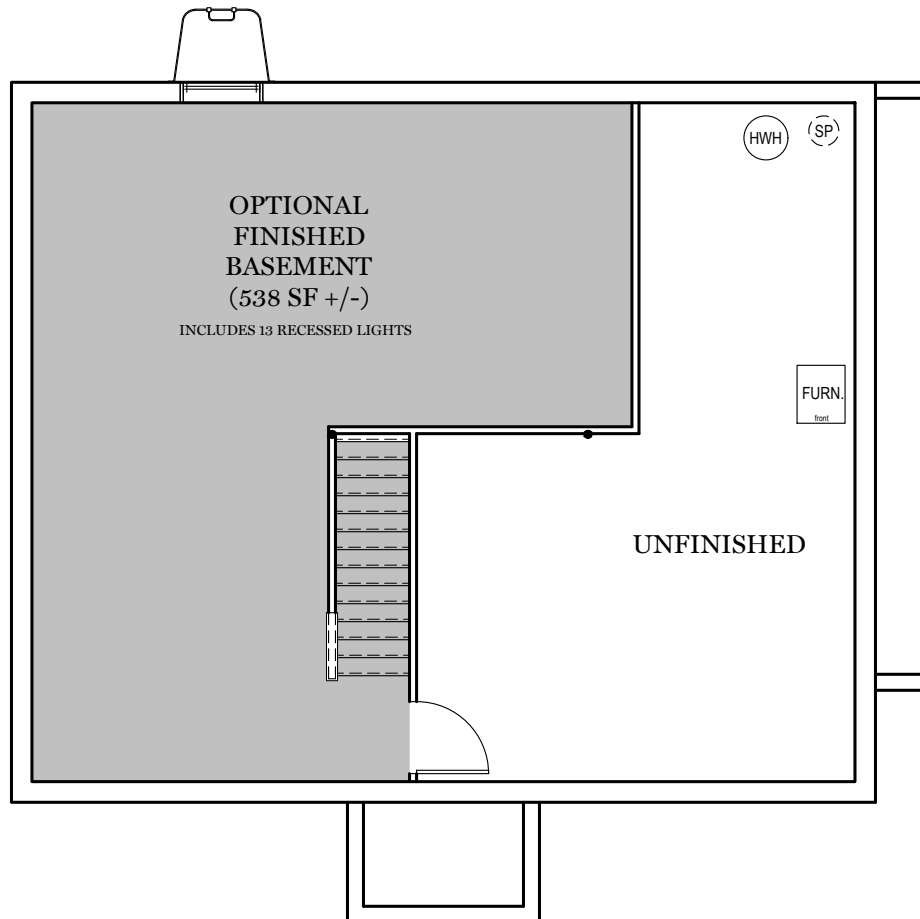
E.G.S. RESERVES THE RIGHT TO  
RELOCATE MECHANICALS AS REQ.  
BY SITE CONDITIONS

ALL IMAGES ARE FOR ARTISTIC  
PURPOSES ONLY AND MAY CONTAIN  
ADDITIONAL FEATURES OR DESIGN  
OPTIONS NOT AVAILABLE ON ALL  
HOME PLANS AND IN ALL  
NEIGHBORHOODS. ROOM SIZE  
DIMENSIONS AND SQUARE FOOTAGES  
ARE APPROXIMATE. CONTACT SALES  
AGENT FOR MORE INFORMATION.  
TERMS AND CONDITIONS APPLY.  
[HTTPS://EGSTOLTZFUSHOMES.COM/  
TERMS-AND-CONDITIONS/](https://EGSTOLTZFUSHOMES.COM/TERMS-AND-CONDITIONS/)

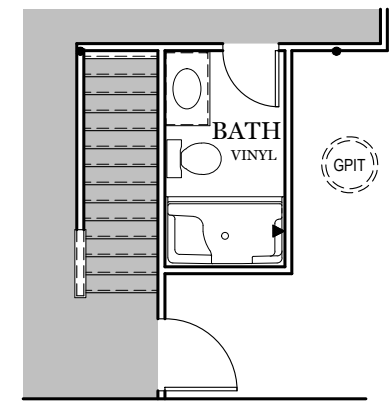
\*\* TRADITIONAL FLOOR  
PLAN ONLY AVAILABLE IN  
SELECT COMMUNITIES

PDF LAST UPDATED 1/14/2022

■ = CARPETED AREA



OPTIONAL FINISHED  
POWDER ROOM (+ 34 SF)



OPTIONAL FINISHED  
BATHROOM (+ 50 SF)



OPTIONAL EXTENDED COVERED PORCH



TRADITIONAL ELEVATION\*\*



OPTIONAL EXTENDED COVERED PORCH



CLASSIC ELEVATION





OPTIONAL EXTENDED COVERED PORCH



AMERICAN ELEVATION



HERITAGE ELEVATION