




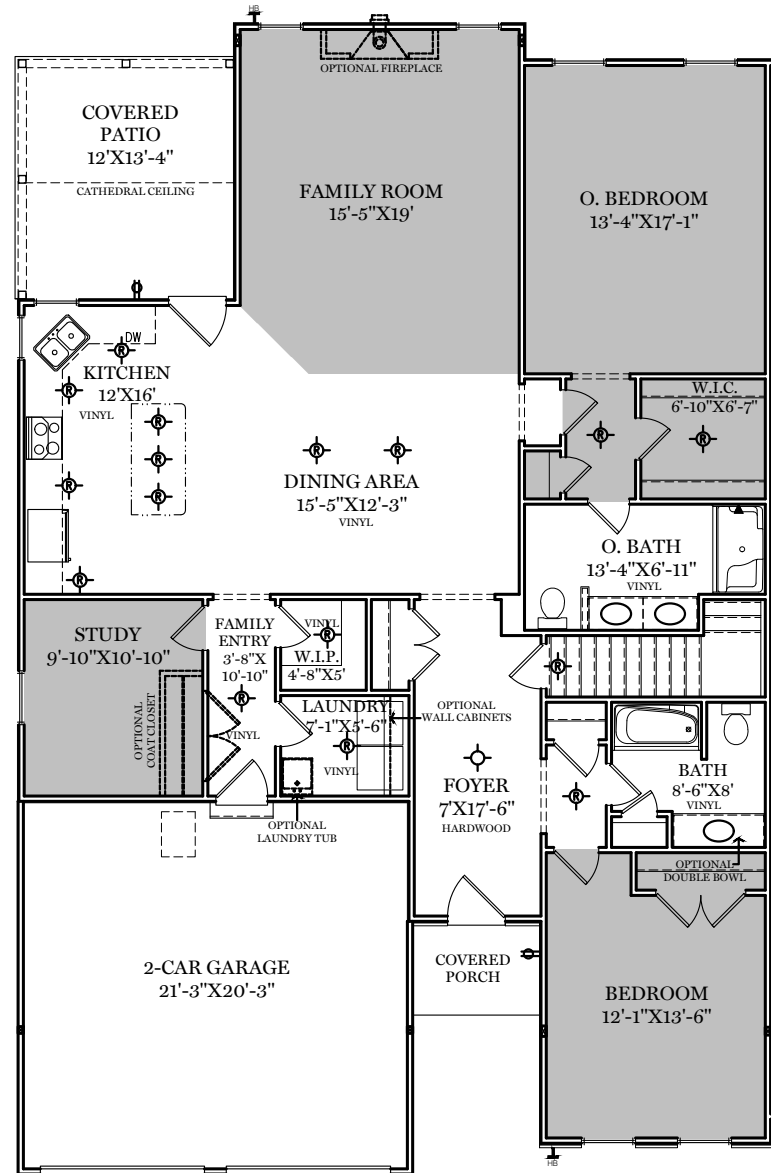
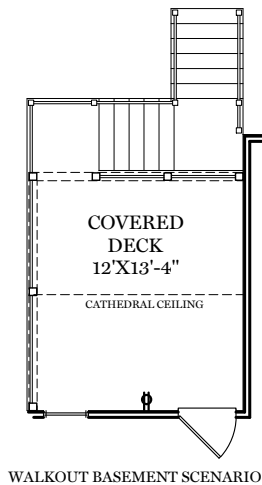
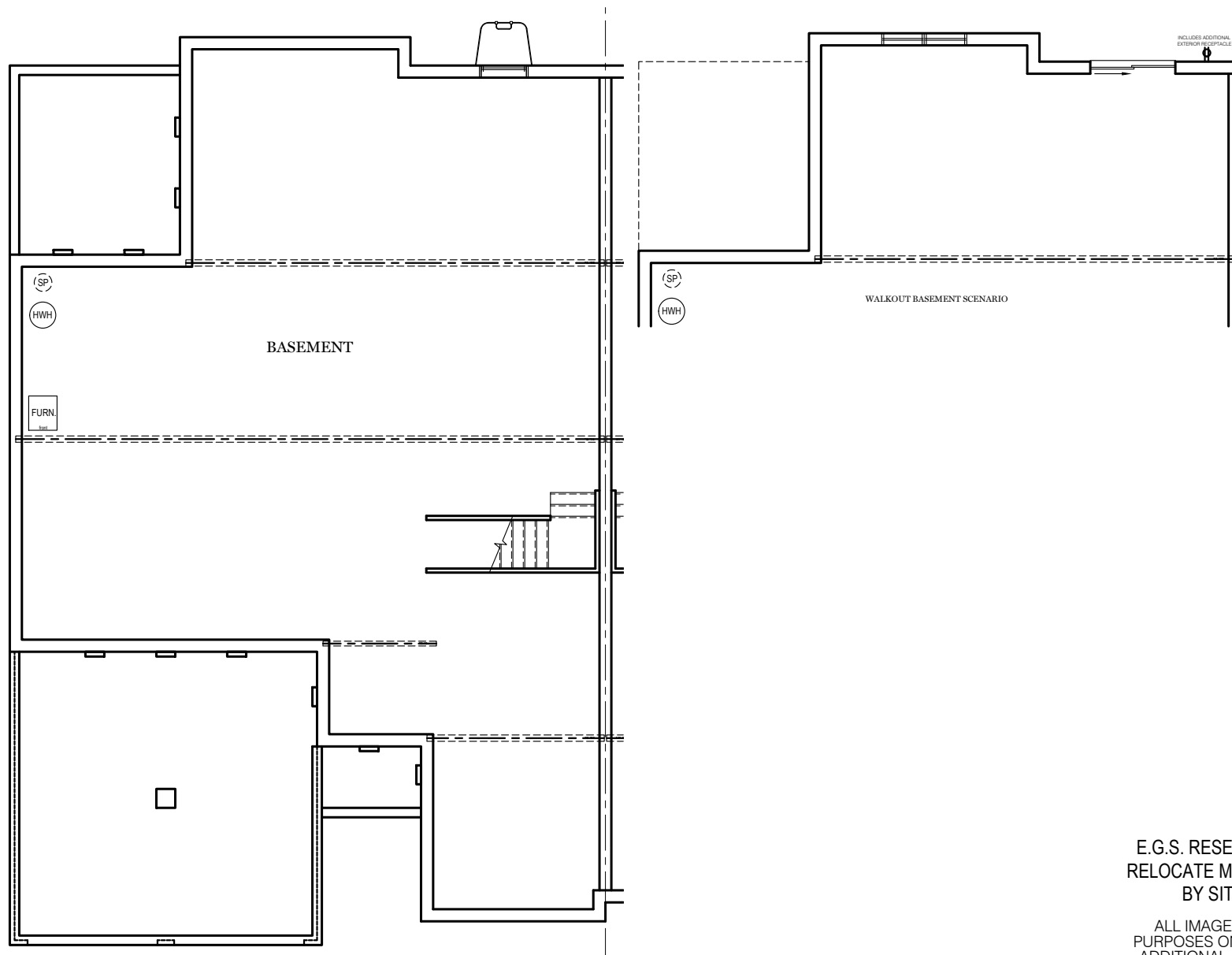


-  = CARPETED AREA
-  = EXTERIOR RECEPTACLE
-  = EXTERIOR HOSE BIBB
-  = FLUSH MOUNT
RECESSED-STYLE LIGHT
-  = CEILING LIGHT



ALL IMAGES ARE FOR ARTISTIC PURPOSES ONLY AND MAY CONTAIN ADDITIONAL FEATURES OR DESIGN OPTIONS NOT AVAILABLE ON ALL HOME PLANS AND IN ALL NEIGHBORHOODS. ROOM SIZE DIMENSIONS AND SQUARE FOOTAGES ARE APPROXIMATE. CONTACT SALES AGENT FOR MORE INFORMATION. TERMS AND CONDITIONS APPLY. [HTTPS://EGSTOLTZFUSHOMES.COM/TERMS-AND-CONDITIONS/](https://EGSTOLTZFUSHOMES.COM/TERMS-AND-CONDITIONS/)



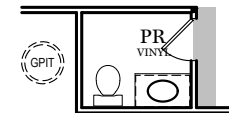
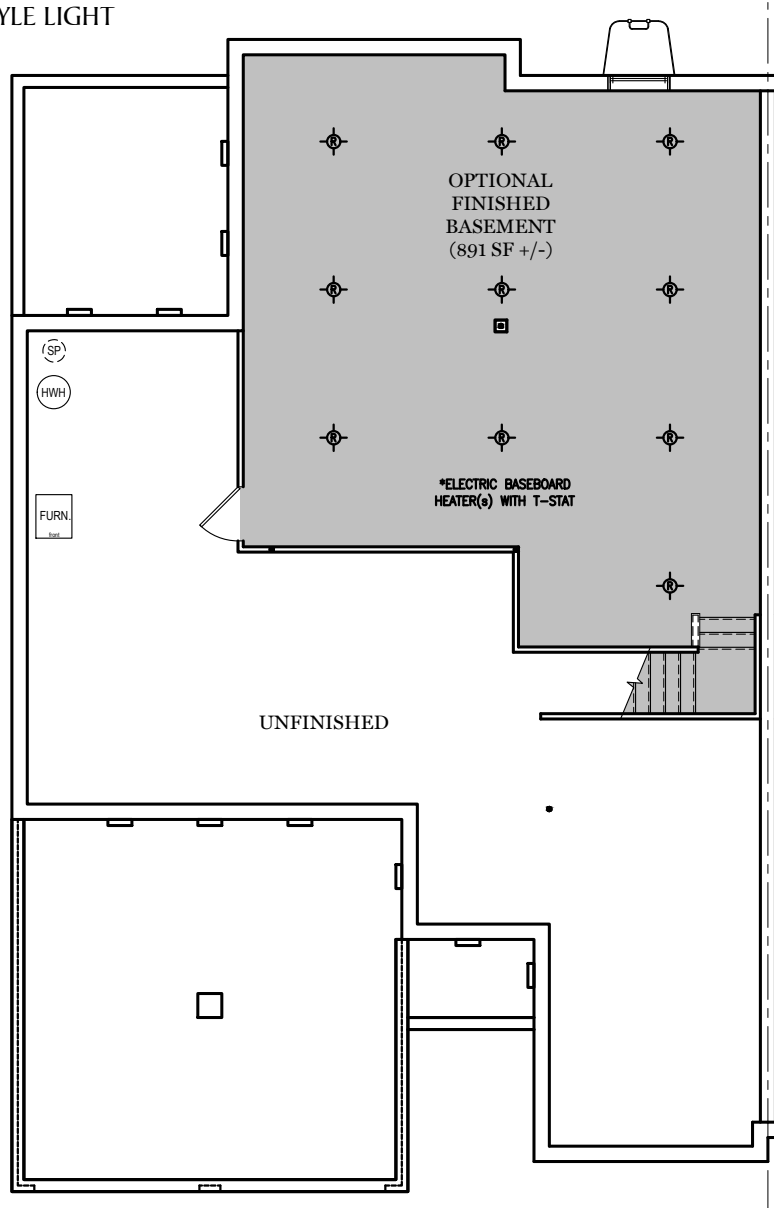
E.G.S. RESERVES THE RIGHT TO
RELOCATE MECHANICALS AS REQ.
BY SITE CONDITIONS

ALL IMAGES ARE FOR ARTISTIC
PURPOSES ONLY AND MAY CONTAIN
ADDITIONAL FEATURES OR DESIGN
OPTIONS NOT AVAILABLE ON ALL
HOME PLANS AND IN ALL
NEIGHBORHOODS. ROOM SIZE
DIMENSIONS AND SQUARE FOOTAGES
ARE APPROXIMATE. CONTACT SALES
AGENT FOR MORE INFORMATION.
TERMS AND CONDITIONS APPLY.
[HTTPS://EGSTOLTZFUSHOMES.COM/
TERMS-AND-CONDITIONS/](https://EGSTOLTZFUSHOMES.COM/TERMS-AND-CONDITIONS/)

Foundation

"CORIANDER II"

- = CARPETED AREA
 ⊗ = FLUSH MOUNT
 RECESSED-STYLE LIGHT



OPTIONAL FINISHED
POWDER ROOM (+36 SF)



OPTIONAL FINISHED
BATHROOM (+52 SF)



ALL IMAGES ARE FOR ARTISTIC
PURPOSES ONLY AND MAY CONTAIN
ADDITIONAL FEATURES OR DESIGN
OPTIONS NOT AVAILABLE ON ALL
HOME PLANS AND IN ALL
NEIGHBORHOODS. ROOM SIZE
DIMENSIONS AND SQUARE FOOTAGES
ARE APPROXIMATE. CONTACT SALES
AGENT FOR MORE INFORMATION.
TERMS AND CONDITIONS APPLY.
[HTTPS://EGSTOLTZFUSHOMES.COM/
TERMS-AND-CONDITIONS/](https://egstoltzfushomes.com/terms-and-conditions/)