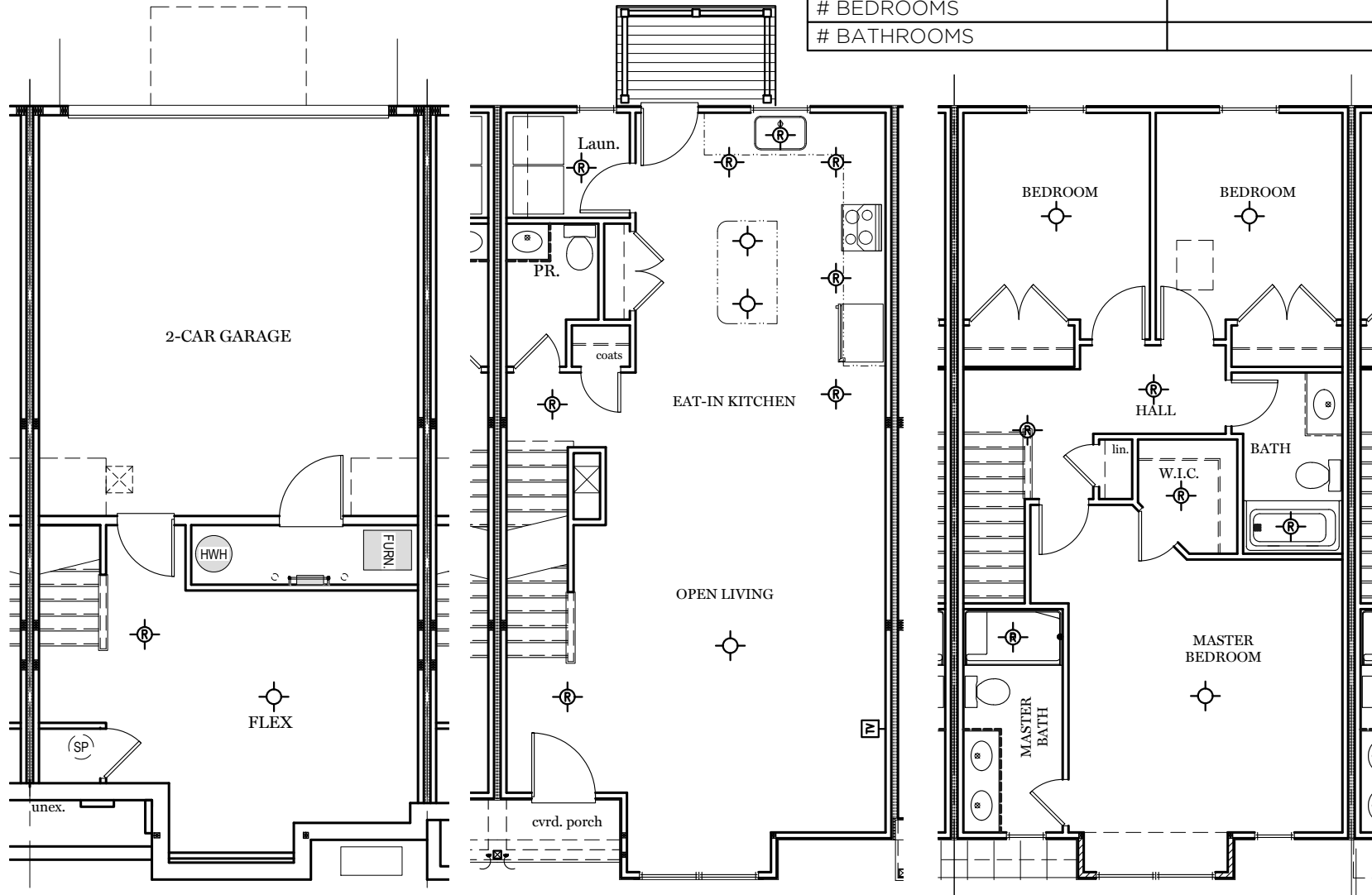


Lime Spring Village

Standard Plan Information UNIT 9

SEQUENCE Q Statistics

| | |
|----------------------------|------|
| LOWER FLOOR(FINISHED AREA) | 245 |
| LIVING FLOOR | 744 |
| UPPER FLOOR | 756 |
| TOTAL S.F. | 1745 |
| | |
| # BEDROOMS | 3 |
| # BATHROOMS | 2.5 |



LIME SPRING VILLAGE JOB #:

LSV 9

Revisions:

04/24/24

Creation Date:

Floor Plans



EGStoltzfus
HOMIES

