




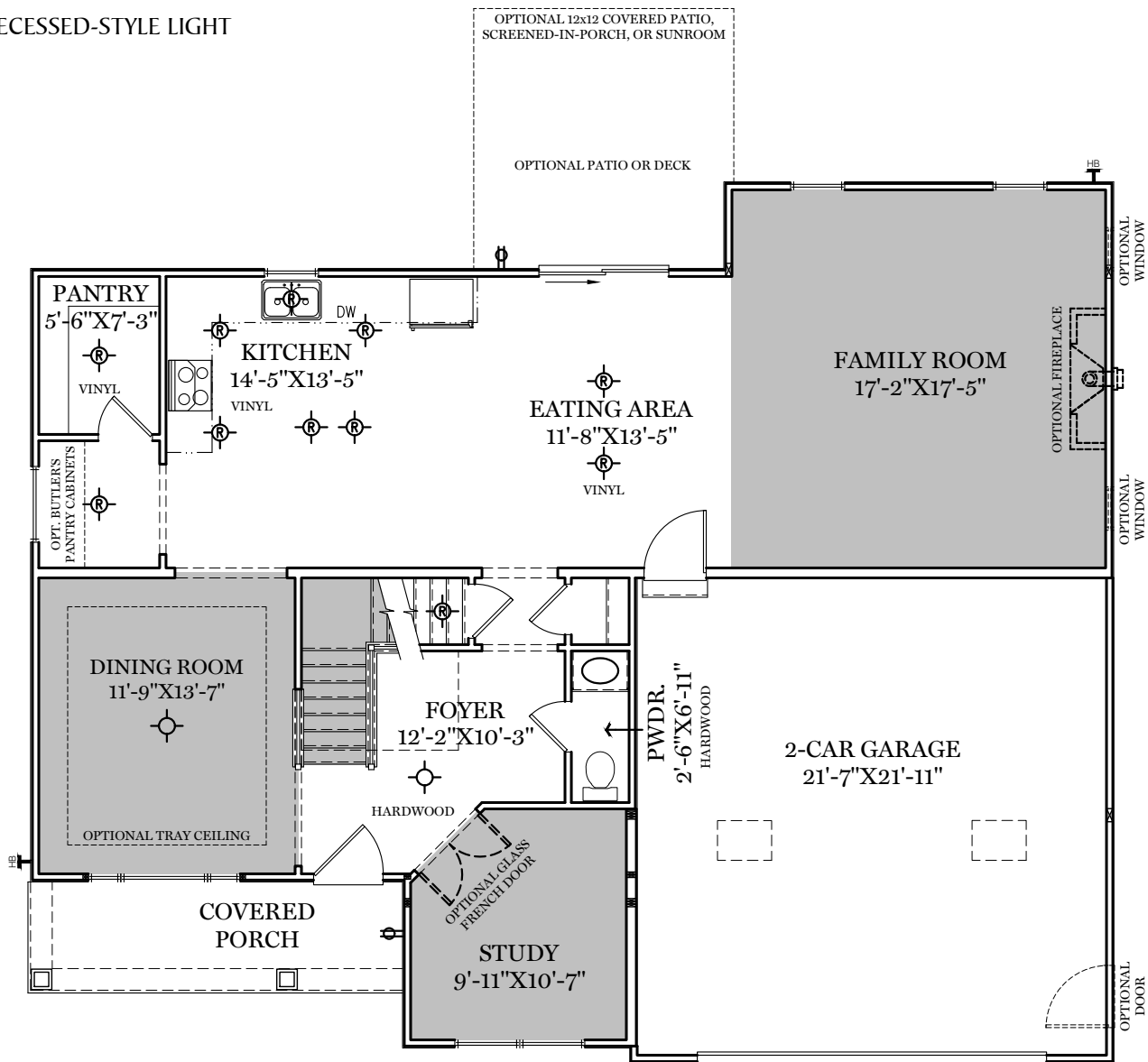
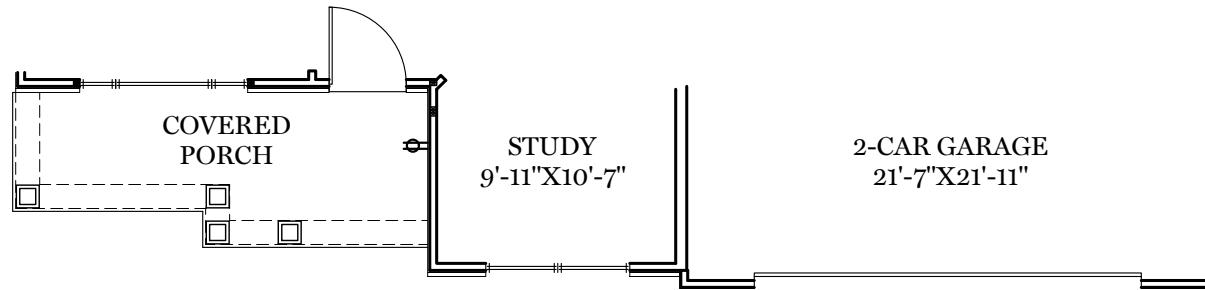


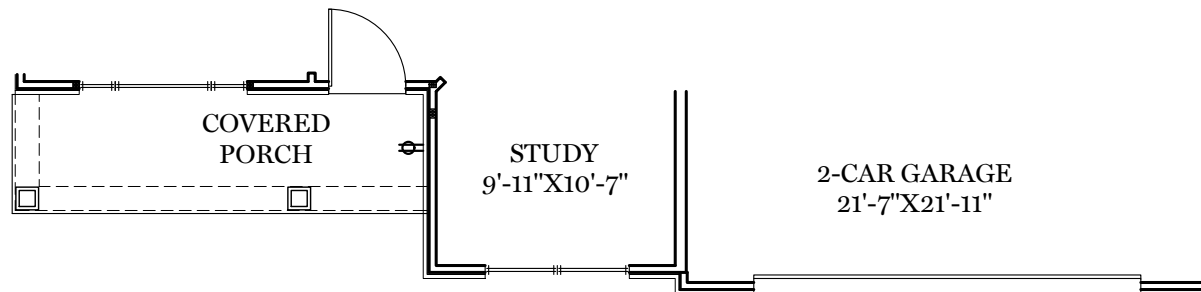
-  = CARPETED AREA
-  = EXTERIOR RECEPTACLE
-  = EXTERIOR HOSE BIBB
-  = FLUSH MOUNT RECESSED-STYLE LIGHT
-  = CEILING LIGHT



ALL IMAGES ARE FOR ARTISTIC PURPOSES ONLY AND MAY CONTAIN ADDITIONAL FEATURES OR DESIGN OPTIONS NOT AVAILABLE ON ALL HOME PLANS AND IN ALL NEIGHBORHOODS. ROOM SIZE DIMENSIONS AND SQUARE FOOTAGES ARE APPROXIMATE. CONTACT SALES AGENT FOR MORE INFORMATION. TERMS AND CONDITIONS APPLY. [HTTPS://EGStoltzfusHomes.com/terms-and-conditions/](https://EGStoltzfusHomes.com/terms-and-conditions/)



AMERICAN FLOOR PLAN

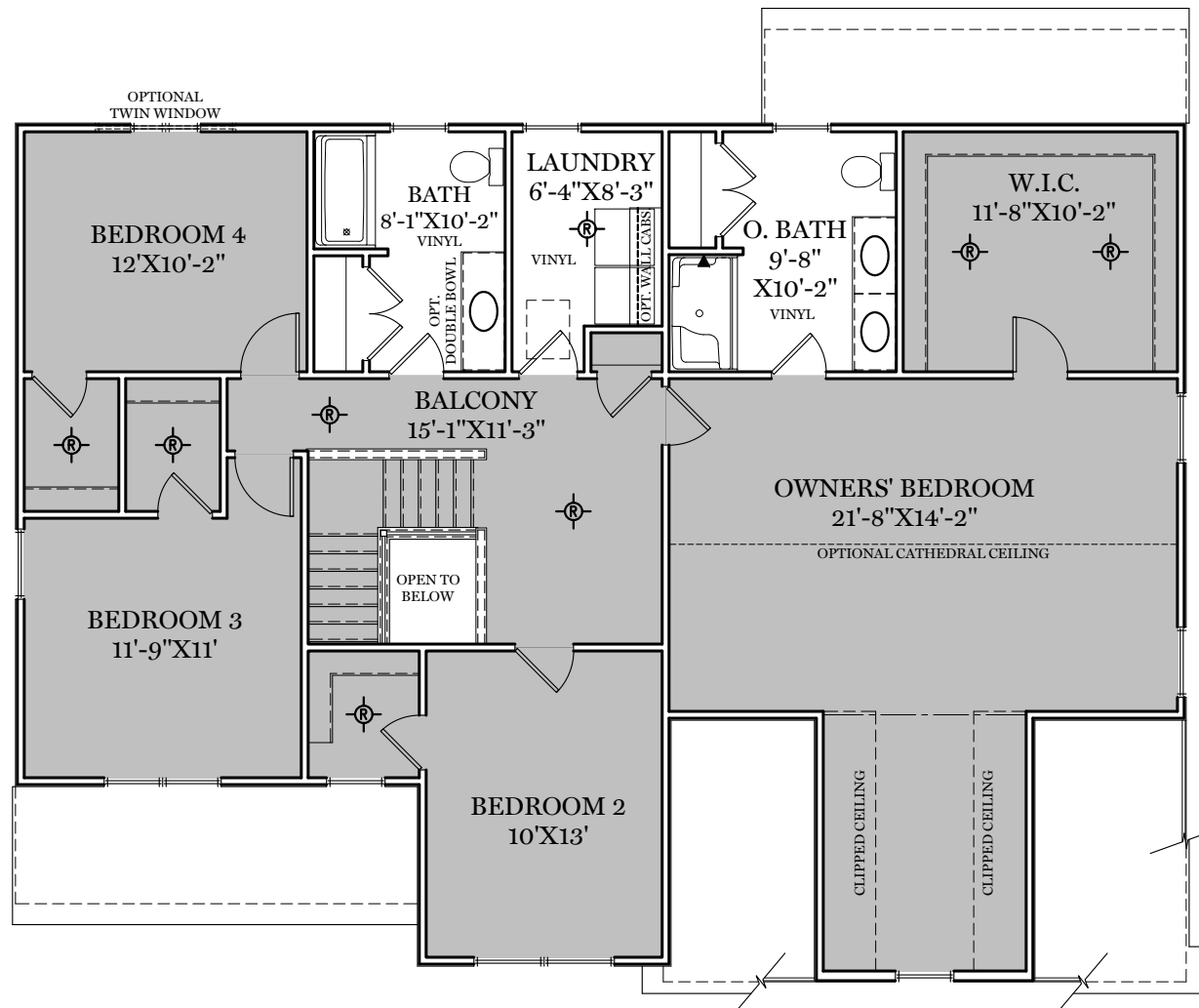


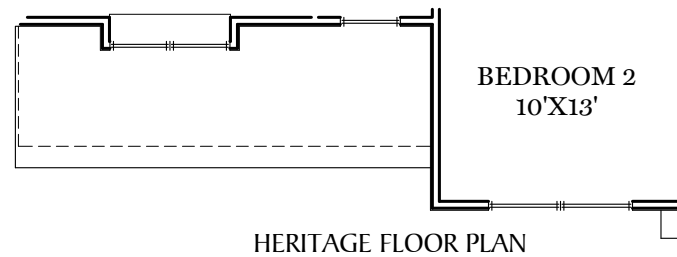
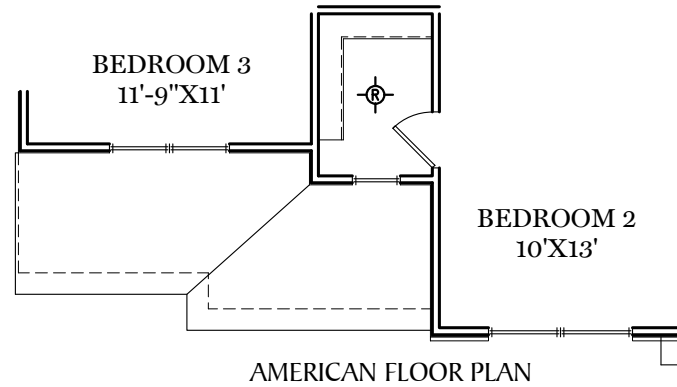
HERITAGE FLOOR PLAN

# 1st Floor Plan

"CAMBRIDGE"

- = CARPETED AREA  
 ⊗ = FLUSH MOUNT RECESSED-STYLE LIGHT



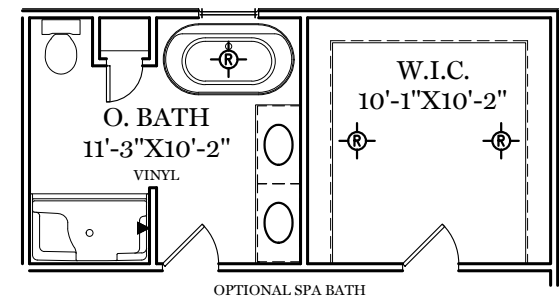
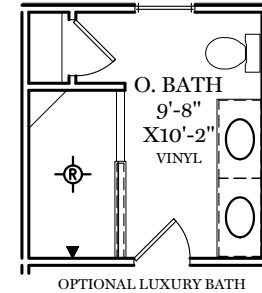
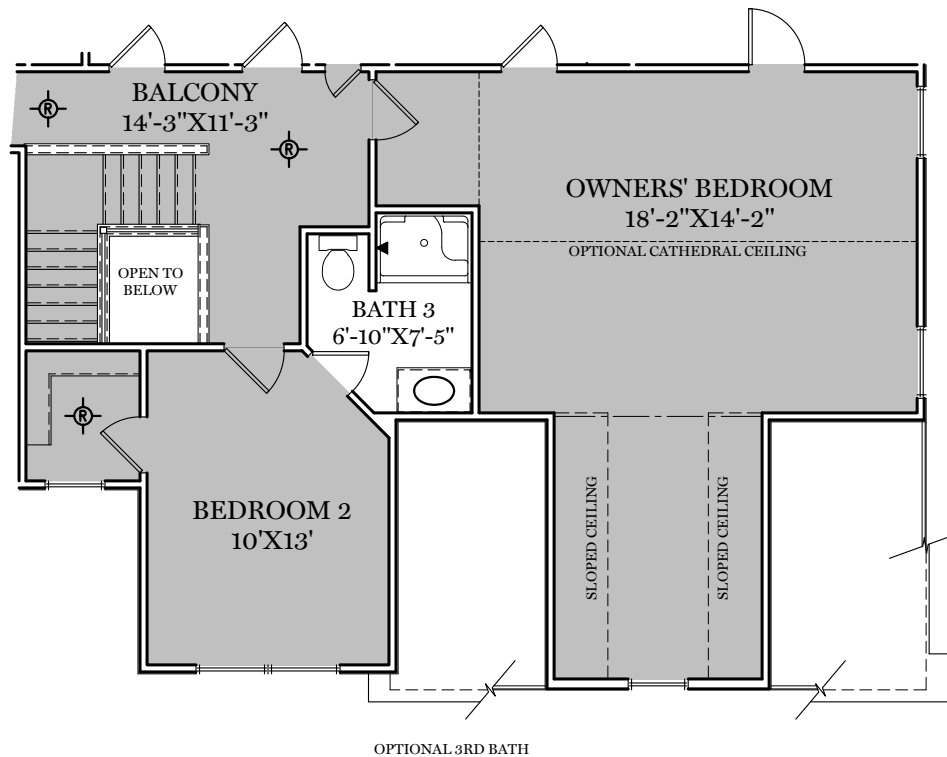


## 2nd Floor Plan

"CAMBRIDGE"

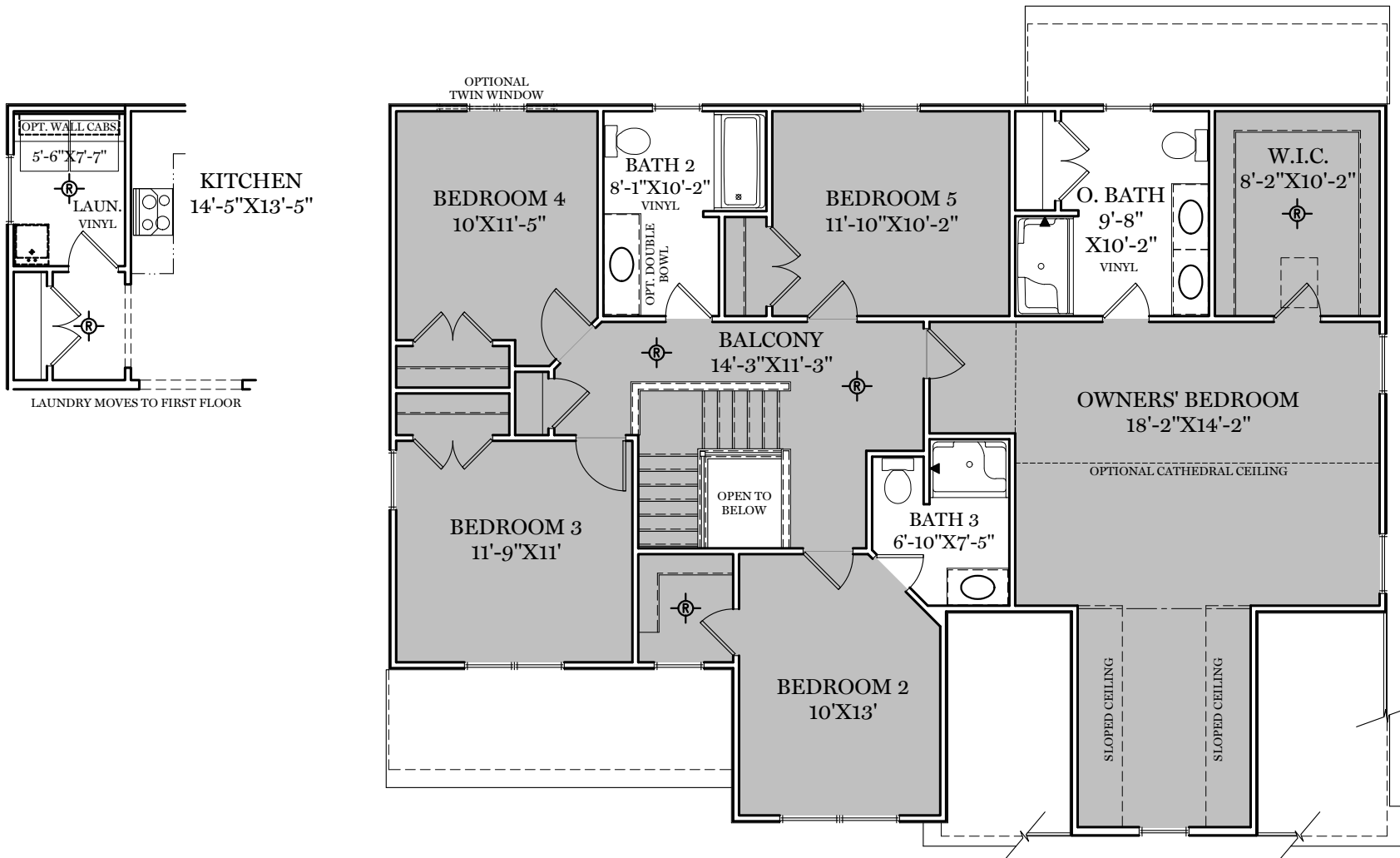
■ = CARPETED AREA

⊙ = FLUSH MOUNT RECESSED-STYLE LIGHT



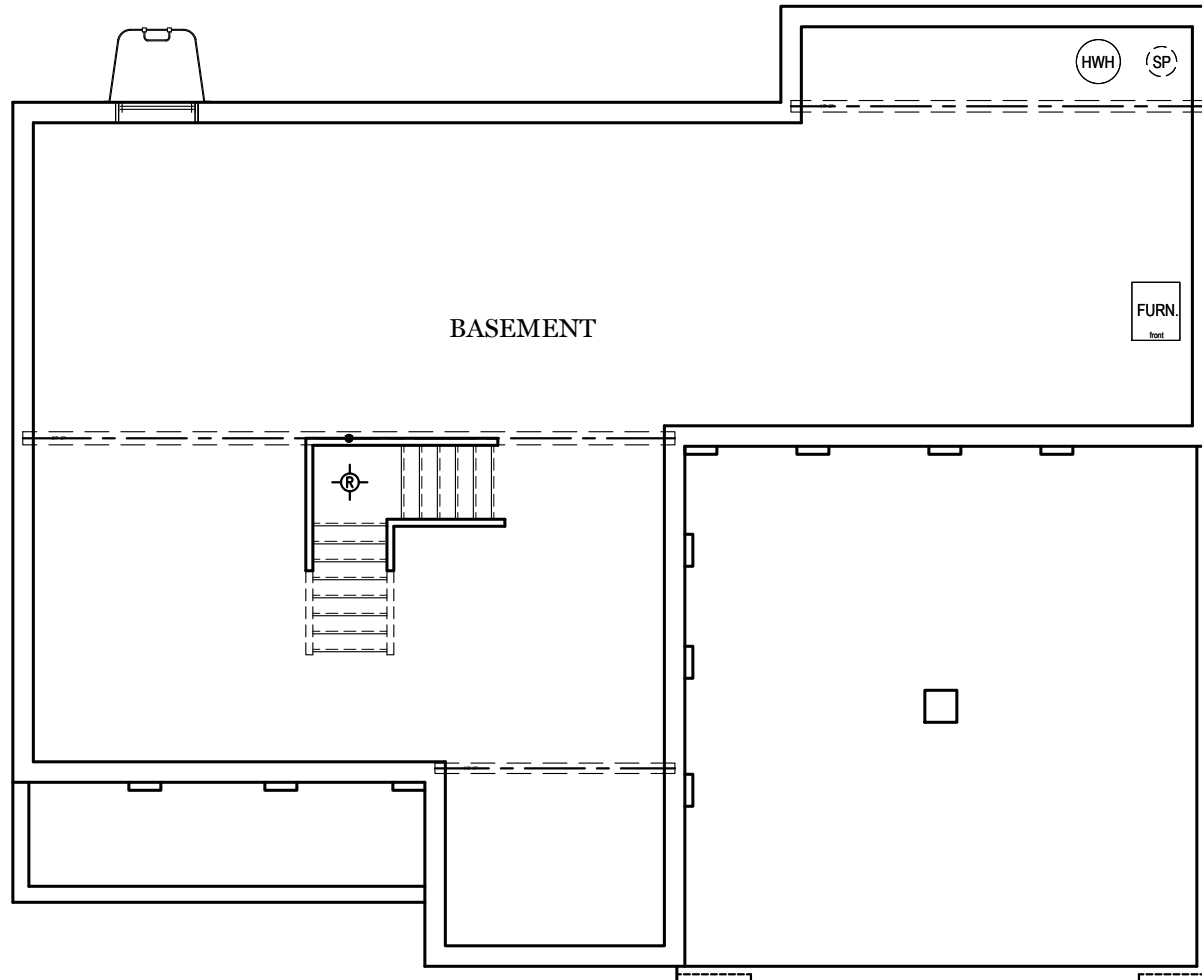
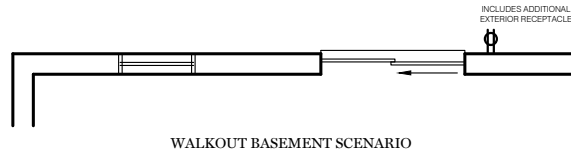
■ = CARPETED AREA

⊙ = FLUSH MOUNT RECESSED-STYLE LIGHT



ALL IMAGES ARE FOR ARTISTIC PURPOSES ONLY AND MAY CONTAIN ADDITIONAL FEATURES OR DESIGN OPTIONS NOT AVAILABLE ON ALL HOME PLANS AND IN ALL NEIGHBORHOODS. ROOM SIZE DIMENSIONS AND SQUARE FOOTAGES ARE APPROXIMATE. CONTACT SALES AGENT FOR MORE INFORMATION. TERMS AND CONDITIONS APPLY. [HTTPS://EGSTOLTZFUSHOMES.COM/TERMS-AND-CONDITIONS/](https://EGSTOLTZFUSHOMES.COM/TERMS-AND-CONDITIONS/)

 = FLUSH MOUNT RECESSED-STYLE LIGHT



TRADITIONAL\*\* FLOOR PLAN SHOWN

## Foundation

"CAMBRIDGE"

\*\* TRADITIONAL FLOOR  
PLAN ONLY AVAILABLE IN  
SELECT COMMUNITIES

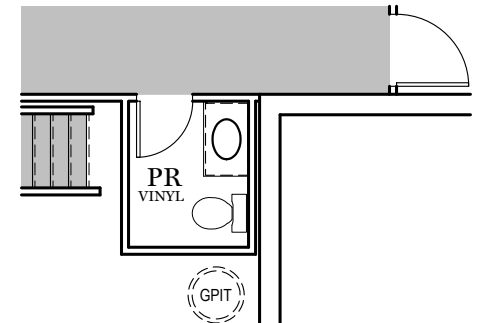
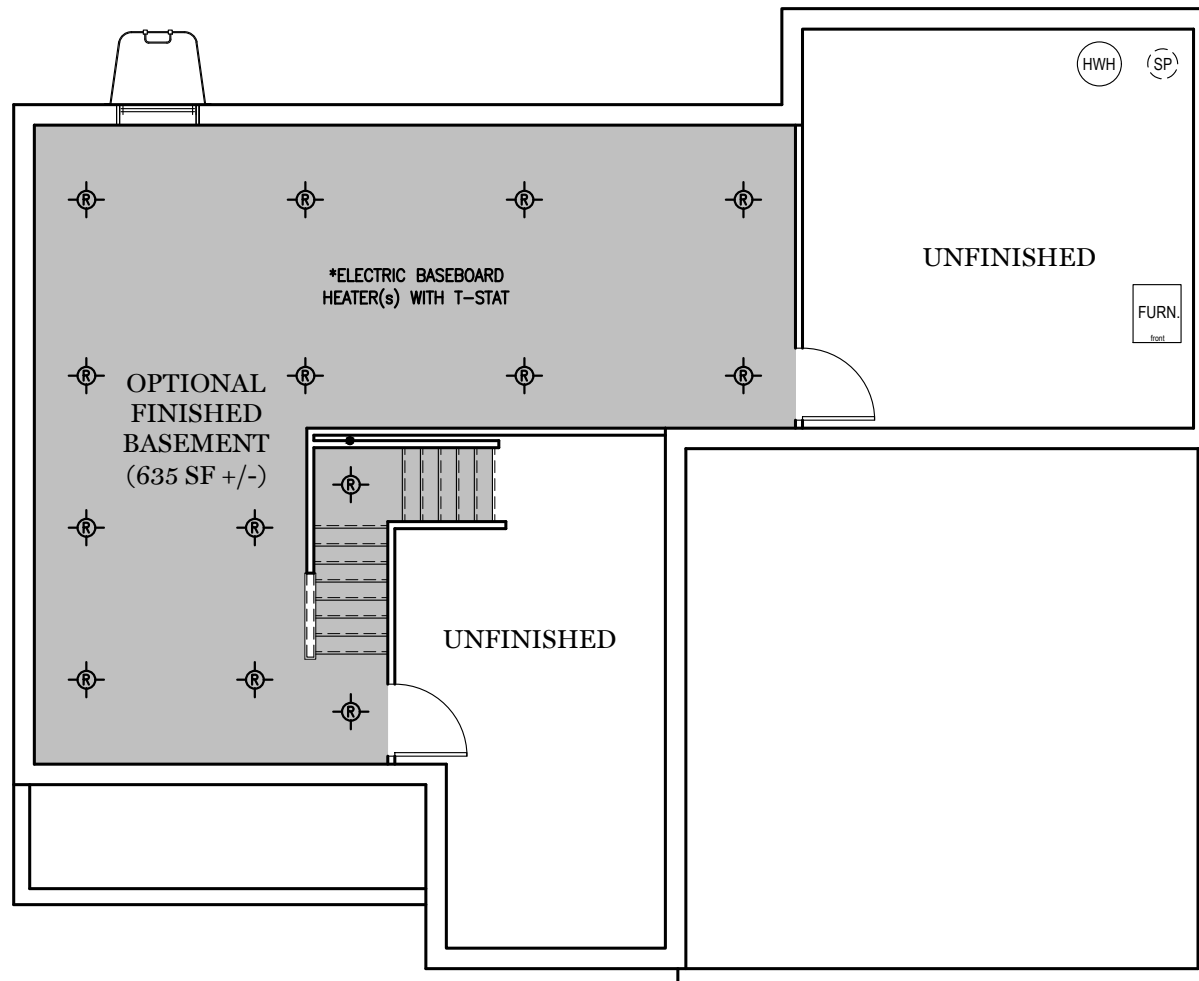
E.G.S. RESERVES THE RIGHT TO  
RELOCATE MECHANICALS AS REQ.  
BY SITE CONDITIONS

ALL IMAGES ARE FOR ARTISTIC  
PURPOSES ONLY AND MAY CONTAIN  
ADDITIONAL FEATURES OR DESIGN  
OPTIONS NOT AVAILABLE ON ALL  
HOME PLANS AND IN ALL  
NEIGHBORHOODS. ROOM SIZE  
DIMENSIONS AND SQUARE FOOTAGES  
ARE APPROXIMATE. CONTACT SALES  
AGENT FOR MORE INFORMATION.  
TERMS AND CONDITIONS APPLY.  
[HTTPS://EGSTOLTZFUSHOMES.COM/  
TERMS-AND-CONDITIONS/](https://egstoltzfushomes.com/terms-and-conditions/)

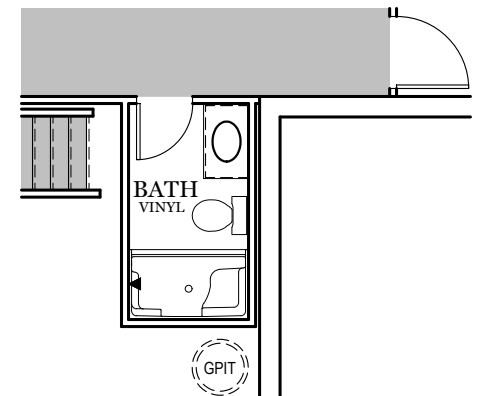
PDF LAST UPDATED 5/13/2025

■ = CARPETED AREA

⊗ = FLUSH MOUNT RECESSED-STYLE LIGHT



OPTIONAL FINISHED  
POWDER ROOM (+ 36 SF)



OPTIONAL FINISHED  
BATHROOM (+ 52 SF)

ALL IMAGES ARE FOR ARTISTIC  
PURPOSES ONLY AND MAY CONTAIN  
ADDITIONAL FEATURES OR DESIGN  
OPTIONS NOT AVAILABLE ON ALL  
HOME PLANS AND IN ALL  
NEIGHBORHOODS. ROOM SIZE  
DIMENSIONS AND SQUARE FOOTAGES  
ARE APPROXIMATE. CONTACT SALES  
AGENT FOR MORE INFORMATION.  
TERMS AND CONDITIONS APPLY.  
[HTTPS://EGSTOLTZFUSHOMES.COM/  
TERMS-AND-CONDITIONS/](https://egstoltzfushomes.com/terms-and-conditions/)





TRADITIONAL ELEVATION\*\*



CLASSIC ELEVATION

## Elevations

"CAMBRIDGE"



AMERICAN ELEVATION



HERITAGE ELEVATION

## Elevations

"CAMBRIDGE"



**EGStoltzfus**

BUILDING ONE STORY AT A TIME

ALL IMAGES ARE FOR ARTISTIC PURPOSES ONLY AND MAY CONTAIN ADDITIONAL FEATURES OR DESIGN OPTIONS NOT AVAILABLE ON ALL HOME PLANS AND IN ALL NEIGHBORHOODS. ROOM SIZE DIMENSIONS AND SQUARE FOOTAGES ARE APPROXIMATE. CONTACT SALES AGENT FOR MORE INFORMATION. TERMS AND CONDITIONS APPLY. [HTTPS://EGSTOLTZFUSHOMES.COM/TERMS-AND-CONDITIONS/](https://egstoltzfushomes.com/terms-and-conditions/)

PDF LAST UPDATED 5/13/2025