




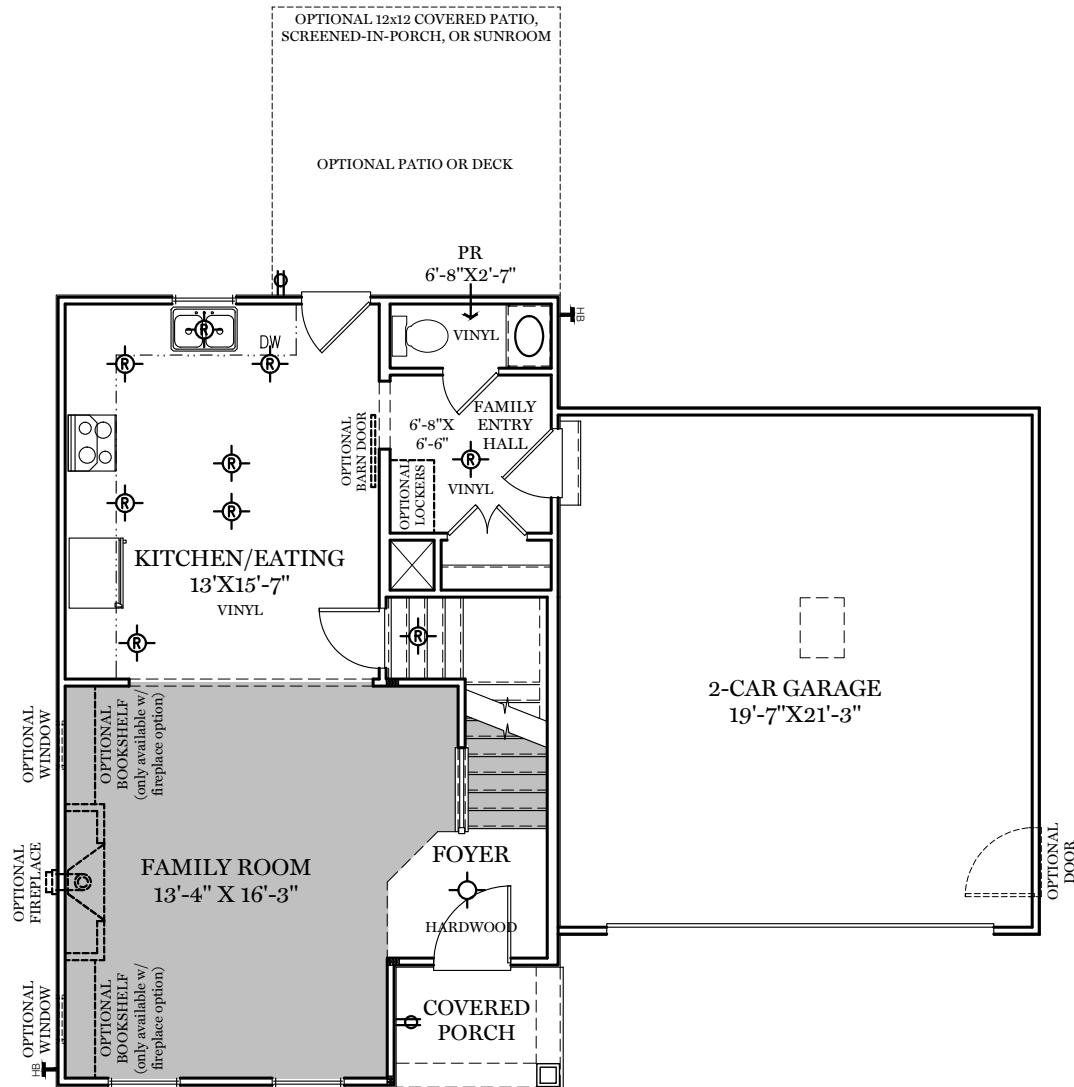


-  = CARPETED AREA
-  = EXTERIOR RECEPTACLE
-  = EXTERIOR HOSE BIBB
-  = FLUSH MOUNT RECESSED-STYLE LIGHT
-  = CEILING LIGHT



TRADITIONAL** & CLASSIC FLOOR PLAN SHOWN

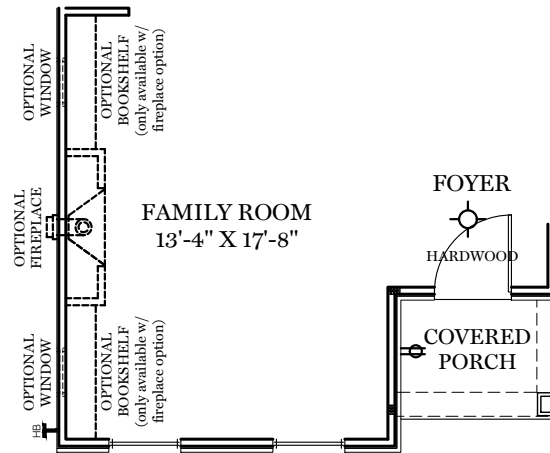
1st Floor Plan - 659 sf

"HARTMAN"

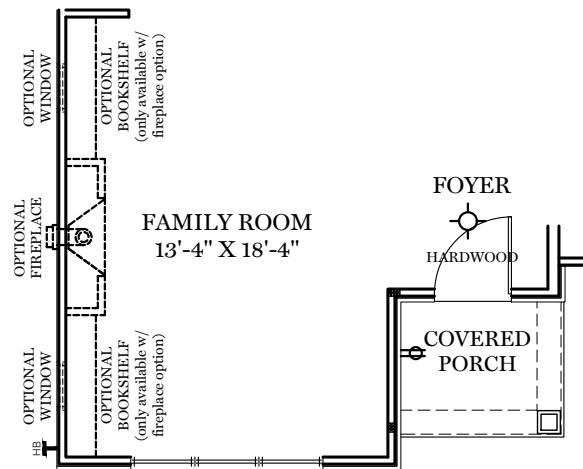
** TRADITIONAL FLOOR
PLAN ONLY AVAILABLE IN
SELECT COMMUNITIES

ALL IMAGES ARE FOR ARTISTIC
PURPOSES ONLY AND MAY CONTAIN
ADDITIONAL FEATURES OR DESIGN
OPTIONS NOT AVAILABLE ON ALL
HOME PLANS AND IN ALL
NEIGHBORHOODS. ROOM SIZE
DIMENSIONS AND SQUARE FOOTAGES
ARE APPROXIMATE. CONTACT SALES
AGENT FOR MORE INFORMATION.
TERMS AND CONDITIONS APPLY.
[HTTPS://EGSTOLTZFUSHOMES.COM/
TERMS-AND-CONDITIONS/](https://egstoltzfushomes.com/terms-and-conditions/)

PDF LAST UPDATED 1/15/2025



AMERICAN FLOOR PLAN



HERITAGE FLOOR PLAN

1st Floor Plan

"HARTMAN"



EGStoltzfus

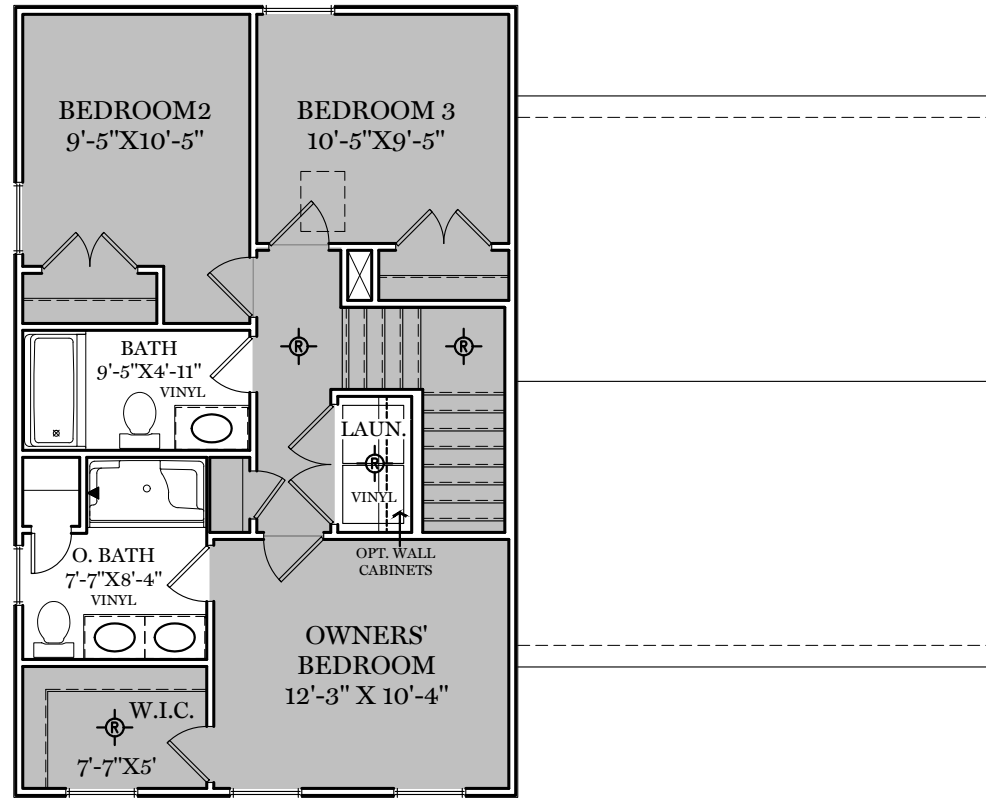
BUILDING ONE STORY AT A TIME

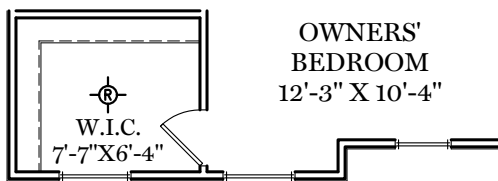
ALL IMAGES ARE FOR ARTISTIC PURPOSES ONLY AND MAY CONTAIN ADDITIONAL FEATURES OR DESIGN OPTIONS NOT AVAILABLE ON ALL HOME PLANS AND IN ALL NEIGHBORHOODS. ROOM SIZE DIMENSIONS AND SQUARE FOOTAGES ARE APPROXIMATE. CONTACT SALES AGENT FOR MORE INFORMATION. TERMS AND CONDITIONS APPLY. [HTTPS://EGSTOLTZFUSHOMES.COM/TERMS-AND-CONDITIONS/](https://egstoltzfushomes.com/terms-and-conditions/)

PDF LAST UPDATED 1/15/2025

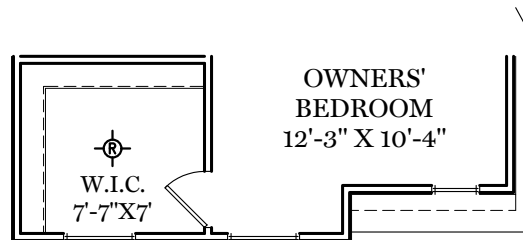
■ = CARPETED AREA

⊗ = FLUSH MOUNT RECESSED-STYLE LIGHT





AMERICAN FLOOR PLAN



HERITAGE FLOOR PLAN

2nd Floor Plan

"HARTMAN"



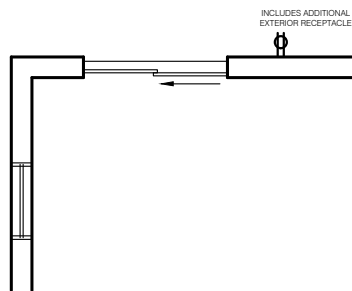
EGStoltzfus

BUILDING ONE STORY AT A TIME

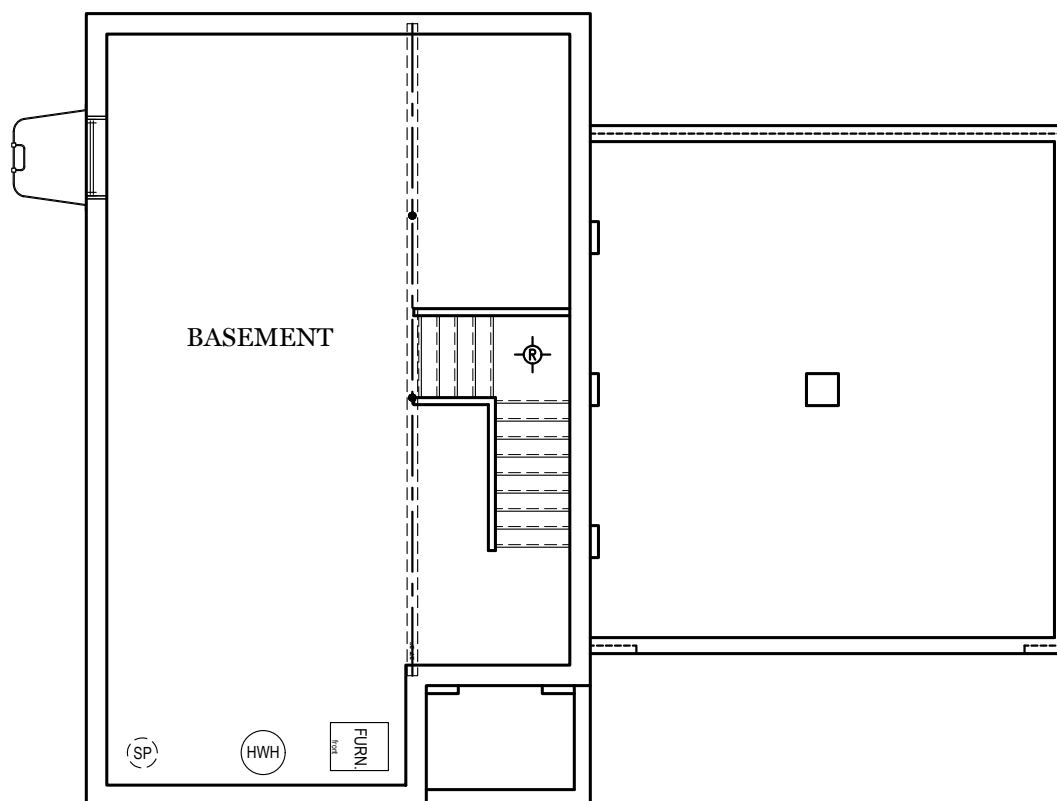
ALL IMAGES ARE FOR ARTISTIC PURPOSES ONLY AND MAY CONTAIN ADDITIONAL FEATURES OR DESIGN OPTIONS NOT AVAILABLE ON ALL HOME PLANS AND IN ALL NEIGHBORHOODS. ROOM SIZE DIMENSIONS AND SQUARE FOOTAGES ARE APPROXIMATE. CONTACT SALES AGENT FOR MORE INFORMATION. TERMS AND CONDITIONS APPLY. [HTTPS://EGSTOLTZFUSHOMES.COM/TERMS-AND-CONDITIONS/](https://egstoltzfushomes.com/terms-and-conditions/)

PDF LAST UPDATED 1/15/2025

⊗ = FLUSH MOUNT RECESSED-STYLE LIGHT



WALKOUT BASEMENT SCENARIO



TRADITIONAL** FLOOR PLAN SHOWN

Foundation

"HARTMAN"

** TRADITIONAL FLOOR
PLAN ONLY AVAILABLE IN
SELECT COMMUNITIES

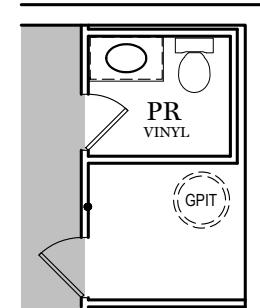
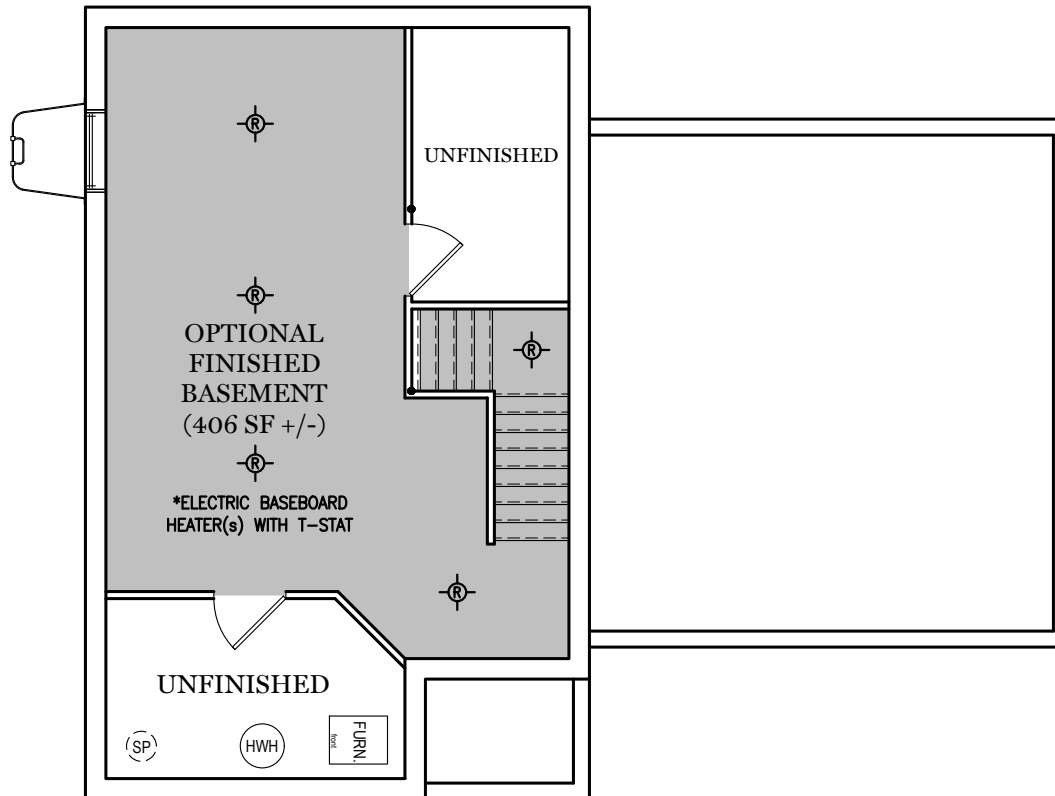
E.G.S. RESERVES THE RIGHT TO
RELOCATE MECHANICALS AS REQ.
BY SITE CONDITIONS

ALL IMAGES ARE FOR ARTISTIC
PURPOSES ONLY AND MAY CONTAIN
ADDITIONAL FEATURES OR DESIGN
OPTIONS NOT AVAILABLE ON ALL
HOME PLANS AND IN ALL
NEIGHBORHOODS. ROOM SIZE
DIMENSIONS AND SQUARE FOOTAGES
ARE APPROXIMATE. CONTACT SALES
AGENT FOR MORE INFORMATION.
TERMS AND CONDITIONS APPLY.
[HTTPS://EGSTOLTZFUSHOMES.COM/
TERMS-AND-CONDITIONS/](https://egstoltzfushomes.com/terms-and-conditions/)

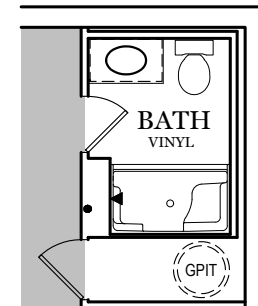
PDF LAST UPDATED 1/15/2025

■ = CARPETED AREA

⊗ = FLUSH MOUNT RECESSED-STYLE LIGHT



OPTIONAL FINISHED
POWDER ROOM (+ 35 SF)



OPTIONAL FINISHED
BATHROOM (+ 54 SF)



TRADITIONAL ELEVATION**



CLASSIC ELEVATION

Elevations

"HARTMAN"



AMERICAN ELEVATION



HERITAGE ELEVATION

Elevations

"HARTMAN"